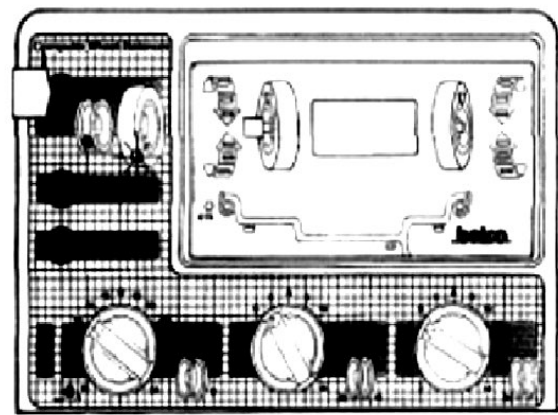


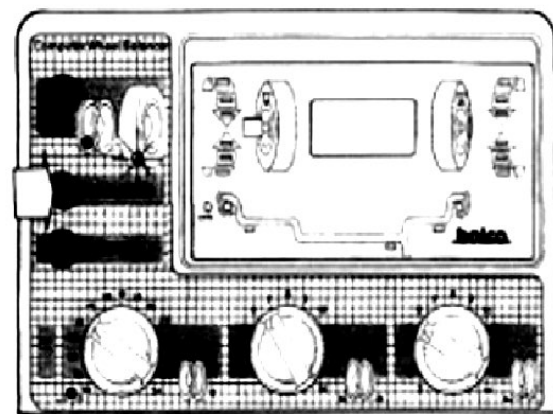
1. OptiMatch mode set

Press the OptiMatch Select Switch. The Rim LED will light up.



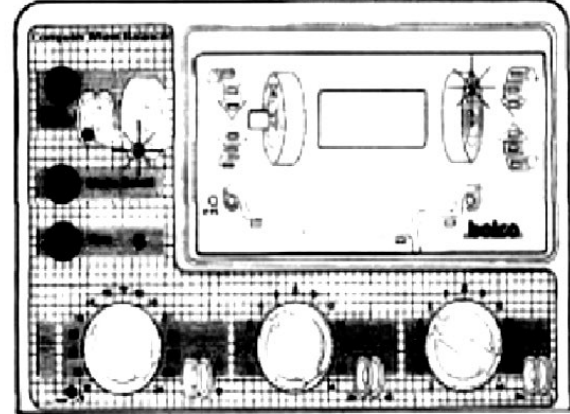
3. Press the OptiMatch Select Switch.

The rim LED that was previously lit will go out, and the rim + tire LED will go out. At the same time, the outer top dead center LED that was previously lit will also go out.



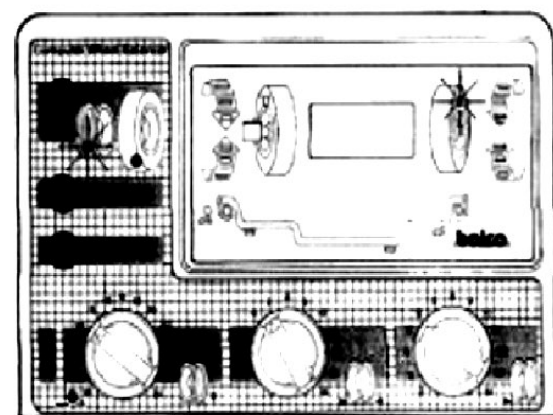
1A. If you are starting with a wheel with tires, press the mode select switch to switch to rim tire mode.

Please read section 7 on the next page for operating instructions.



4. Remove the wheel, assemble the tire and wheel, Reattach it to the balancer and spin.

The automatic brake will engage and the outer top dead center LED will light up. Place the valve position at top dead center.

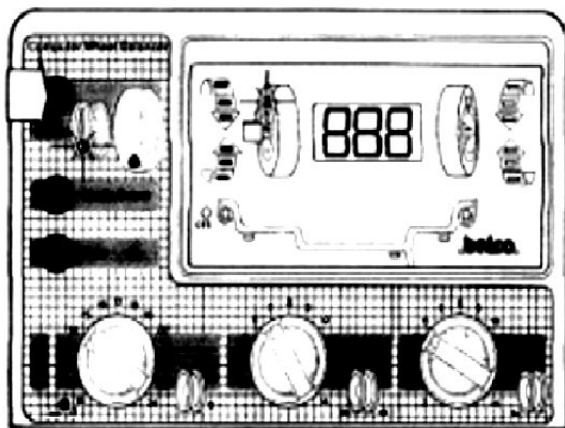


2. If you choose to start from the wheel

Spin the wheel.

The outer top dead center LED will light up.

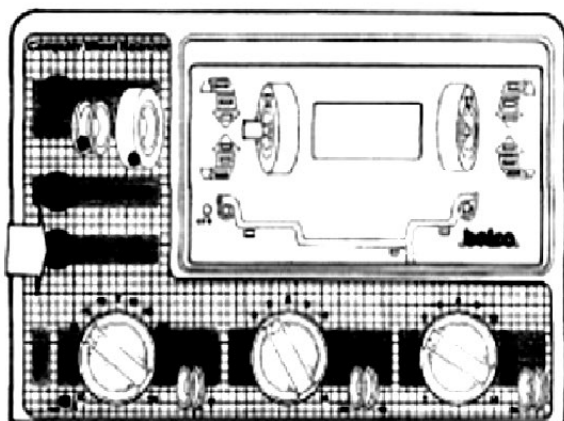
Position the valve at top dead center.



5. With the valve correctly positioned at top dead center, press the OptiMatch Select Switch.

The Rim+Tire LED will turn off and the Rim LED will turn on.
Continue peeling the wheel until "888" appears in the display window.
Place an X at the top dead center of the tire.

***The most ideal matching point for the tire and wheel is to align the "X" mark on the tire with the valve position on the wheel.**



6. Cancel matching mode

Press the fine mode switch.

The rim LED will turn off and return to normal mode.
(You can return to normal mode at any time by pressing the fine mode switch.

7. Starting with a wheel with a tire (1A)

1) Switch to rim+tire mode.

Spin the wheel.

The top dead center LED will light up.

The wheel hub position is adjusted to the top dead center. At this position, an "X" is placed on the tire to indicate the hub position.

2) Place the valve at top dead center.

Press the OPTIMATCH SELECT switch. The

RIM+TIRE LED goes out and the RIM LED lights up. At the same time, the TDC LED goes out.

3) Remove the tire from the wheel and spin the wheel by itself. The automatic

brake will engage and the top dead center LED will light up. Adjust the valve position to the top dead center.

4) Press the Optimize Select switch.

The rim LED will go out and the rim + tire LED will light up. Rotate the wheel until "888" is displayed in the display window. Place the "X" mark at the top dead center of the wheel. ***The most ideal matching point is to align the X mark on the tire with the "X" mark on the wheel.**

*C · T · S wheel measurement

Use the mode select switch to switch to C-T-S mode.

Set the rim diameter of the measuring wheel.

The rim width setting is adjusted to the width of the weight that will actually be installed. The rim

distance setting is adjusted to the inner weight position that will actually be installed. the distance to the camera.

*C.T.S. wheels are the latest type of wheels with a special shape.

They are still only available in a few countries in Europe.
It is only used in Luma.

This machine is a cutting-edge C · T · S wheel measurement function.

♣ Built-in.