

PL 8348 A05

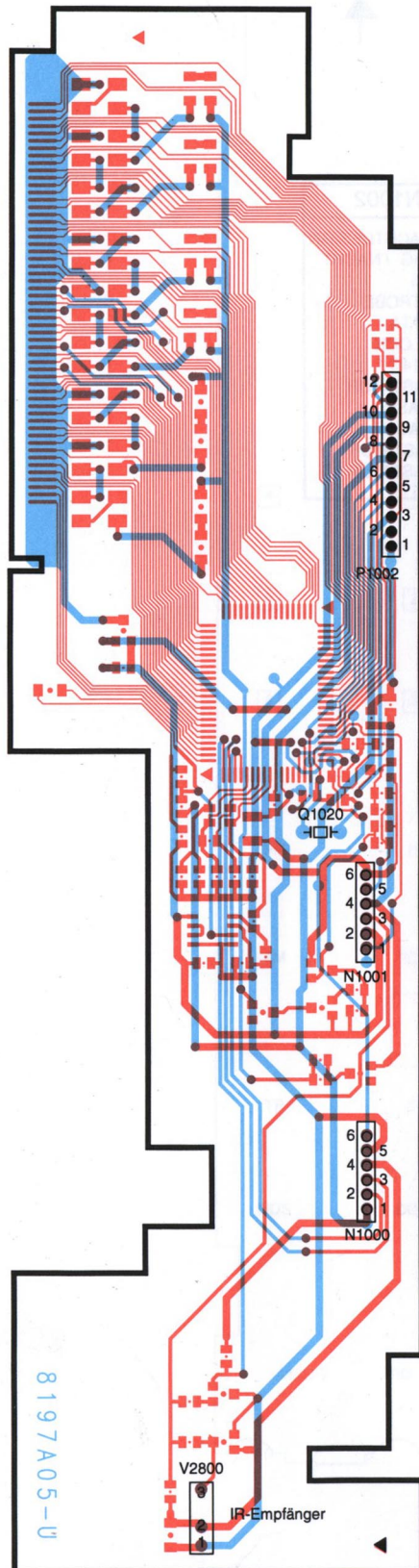


PL 8348 A05

Chip



Display-Treiberplatte



P1002

- 1 = NACHTDESIGN
- 2 = TAG / NACHT
- 3 = U5
- 4 = STROBE
- 5 = DATA
- 6 = CLOCK
- 7 = U14C
- 8 = TASTATUR
- 9 = MASSE
- 10 = MASSE
- 11 = TASTATUR
- 12 = TASTATUR

N1001

- 1 = STATUS
- 2 = U14C
- 3 = FB-KLIMA
- 4 = BELEUCHTUNG
- 5 = TAG / NACHT
- 6 = MASSE

N1000

- 1 = U5
- 2 = SCL-DISPLAY I
- 3 = SDA-DISPLAY I
- 4 = U53
- 5 = MASSE
- 6 = RESET-KAPPE

