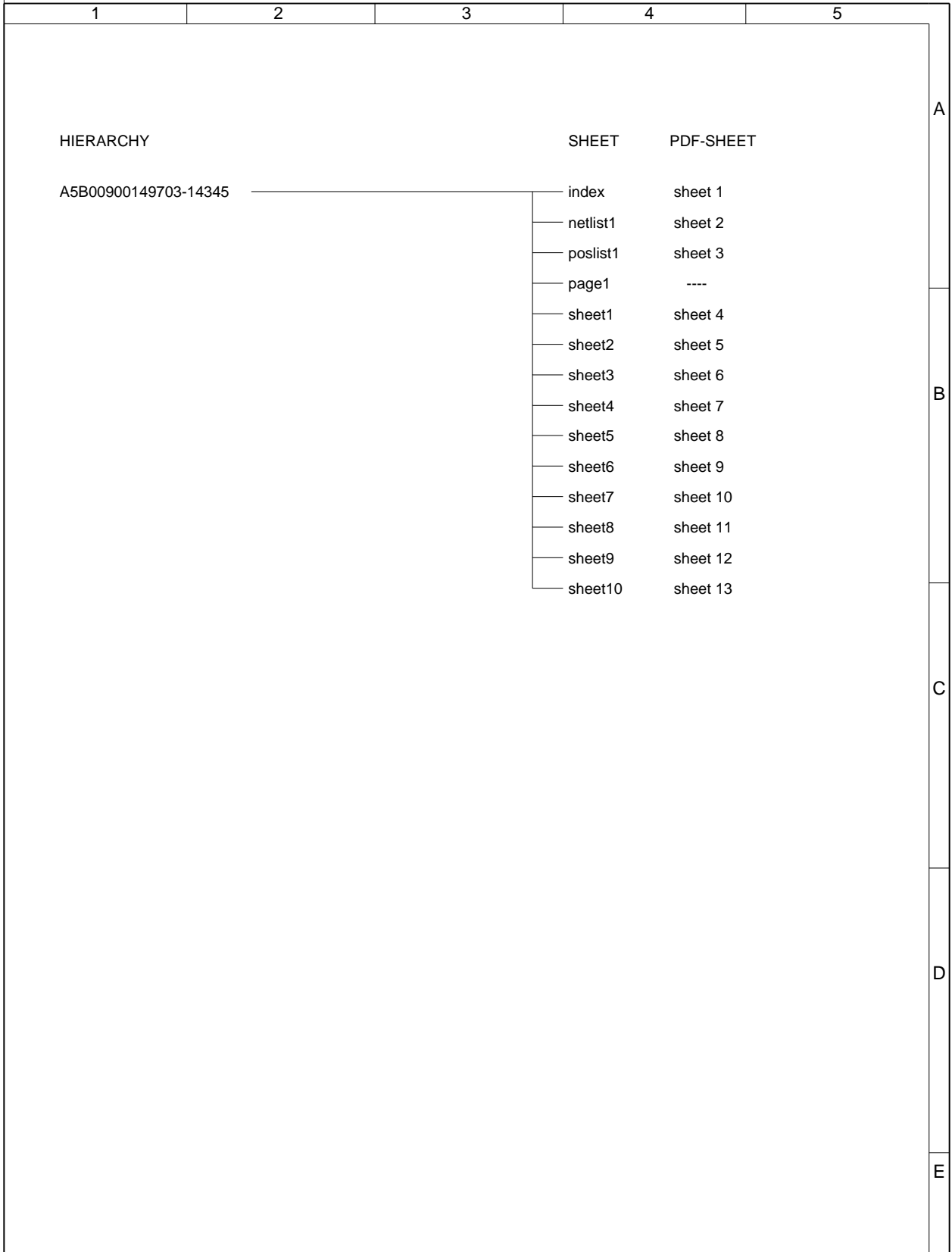


Proprietary data, company confidential.  
All rights reserved

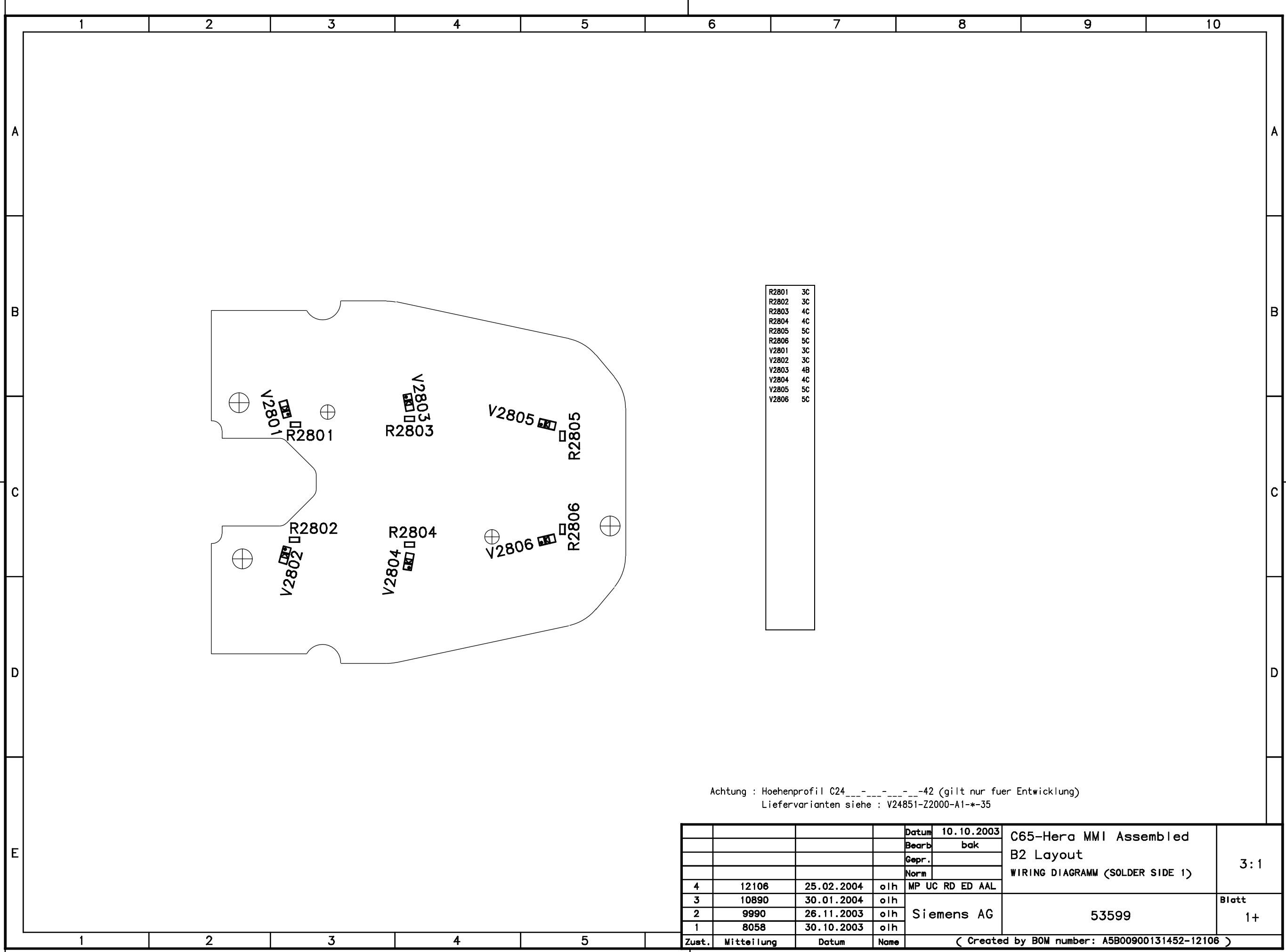
Als Betriebsgeheimnis anvertraut  
Alle Rechte vorbehalten



				DATE	21.10.2003	C65 Hera HIT Assembled B2.1 Layout TOP HIERARCHY LEVEL SCHEMATIC	1:1
8	18316	20.08.2004	rba	USER	rba		
7	18316	19.08.2004	rba	APPR'D			
6	17606	03.08.2004	olh				
5	16689	06.07.2004	rba	MP UC RD LPD AAL			
4	14989	13.05.2004	olh	Siemens AG		72620	index
3	14616	30.04.2004	olh				
2	14616	29.04.2004	olh				
VERS.	CHANGE NUMBER	DATE	NAME	( Created by BOM number: A5B00900149910-18316 )			

PROPRIETARY DATA, COMPANY CONFIDENTIAL  
ALL RIGHTS RESERVED

ALS BETRIEBSGEHEIMNIS ANVERTRAUT  
ALLE RECHTE VORBEHALTEN



- R2801 3C
- R2802 3C
- R2803 4C
- R2804 4C
- R2805 5C
- R2806 5C
- V2801 3C
- V2802 3C
- V2803 4B
- V2804 4C
- V2805 5C
- V2806 5C

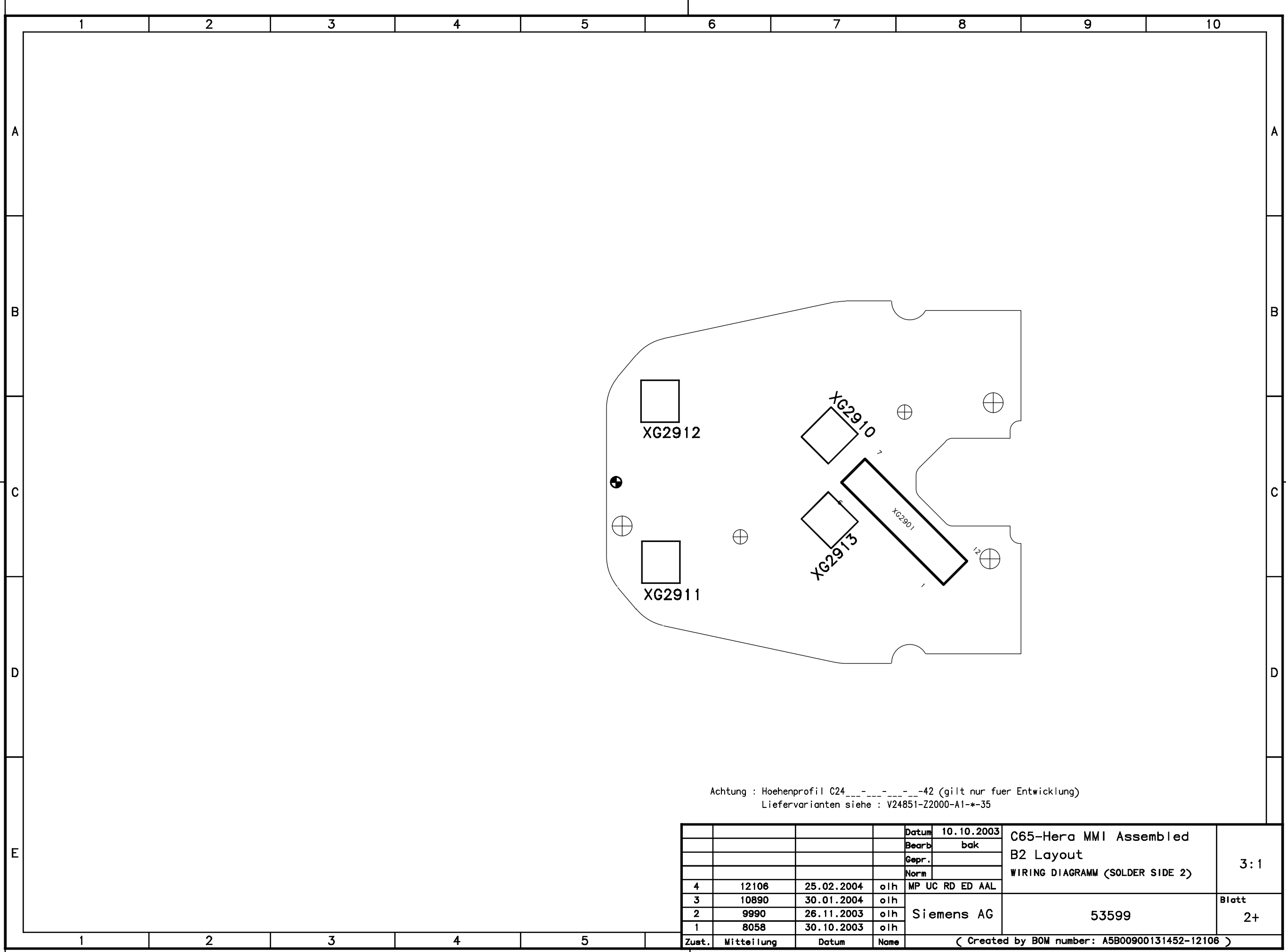
Achtung : Höhenprofil C24\_...\_...\_42 (gilt nur fuer Entwicklung)  
Liefervarianten siehe : V24851-Z2000-A1-\*35

				Datum	10.10.2003	C65-Hera MMI Assembled B2 Layout WIRING DIAGRAMM (SOLDER SIDE 1)	3:1
				Bearb	bak		
				Gepr.			
				Norm			
4	12106	25.02.2004	o/h	MP UC RD ED AAL			
3	10890	30.01.2004	o/h				
2	9990	26.11.2003	o/h				
1	8058	30.10.2003	o/h				
Zust.	Mitteilung	Datum	Name	( Created by BOM number: A5B00900131452-12106 )			

Siemens AG  
53599  
Blatt  
1+

PROPRIETARY DATA, COMPANY CONFIDENTIAL  
ALL RIGHTS RESERVED

ALS BETRIEBSGEHEIMNIS ANVERTRAUT  
ALLE RECHTE VORBEHALTEN



Achtung : Höhenprofil C24-----42 (gilt nur fuer Entwicklung)  
Liefervarianten siehe : V24851-Z2000-A1-\*35

				Datum	10.10.2003	C65-Hera MMI Assembled B2 Layout WIRING DIAGRAMM (SOLDER SIDE 2)	3:1
				Bearb	bak		
				Gepr.			
				Norm			
4	12106	25.02.2004	olh	MP UC RD ED AAL			
3	10890	30.01.2004	olh				
2	9990	26.11.2003	olh				
1	8058	30.10.2003	olh				
Zust.	Mitteilung	Datum	Name	( Created by BOM number: A5B00900131452-12106 )			

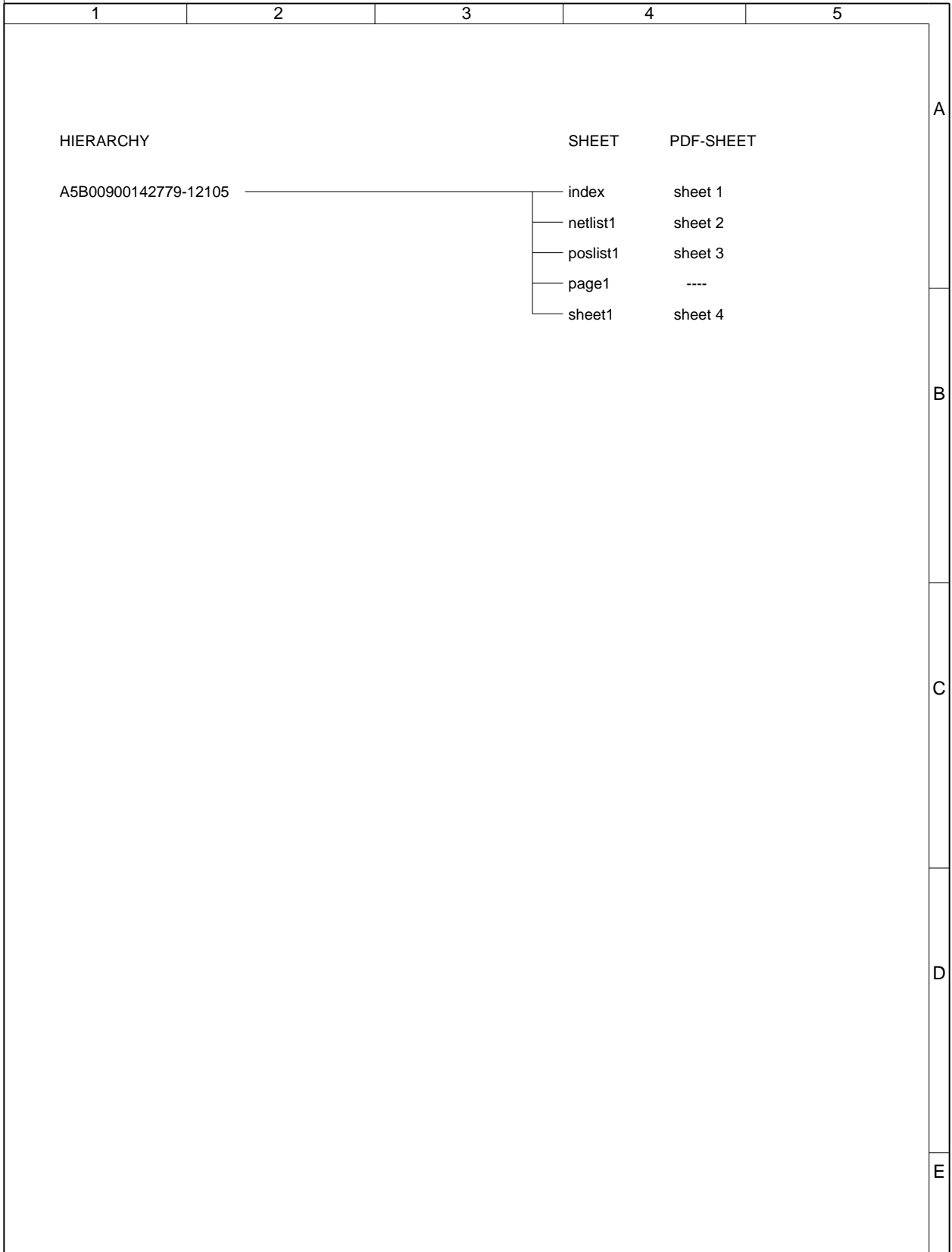
Siemens AG

53599

Blatt  
2+

Proprietary data, company confidential.  
All rights reserved

Als Betriebsgeheimnis anvertraut  
Alle Rechte vorbehalten



VERS.	CHANGE NUMBER	DATE	NAME	DATE	USER	APPR'D		
				10.10.2003	bak		C65-Hera MMI Assembled B2 Layout TOP HIERARCHY LEVEL SCHEMATIC	1:1
5	13822	05.04.2004	rba					
4	12106	25.02.2004	olh	MP UC RD ED AAL				
3	10890	14.01.2004	olh					
2	9990	26.11.2003	olh	Siemens AG			53598	index
1	8058	10.10.2003	olh					
				( Created by BOM number: A5B00900131452-13822 )				

Proprietary data, company confidential.  
All rights reserved

Als Betriebsgeheimnis anvertraut  
Alle Rechte vorbehalten

1	2	3	4	5
<p>KB_ON_OFF /sheet1 7 D /sheet1 8 D</p> <p>KP_IN0 /sheet1 8 D /sheet1 7 C</p> <p>KP_IN1 /sheet1 5 C /sheet1 8 D</p> <p>KP_IN2 /sheet1 5 C /sheet1 8 D</p> <p>KP_IN3 /sheet1 5 B /sheet1 8 D</p> <p>KP_IN4 /sheet1 5 B /sheet1 8 D</p> <p>KP_OUT0 /sheet1 5 A /sheet1 8 D</p> <p>KP_OUT1 /sheet1 5 A /sheet1 8 D</p> <p>KP_OUT2 /sheet1 5 A /sheet1 8 D</p> <p>LIGHT_KP /sheet1 8 D /sheet1 7 B</p> <p>VCC_LIGHT /sheet1 8 E /sheet1 7 A</p>				

A  
B  
C  
D  
E

VERS.	CHANGE NUMBER	DATE	NAME	DATE	USER	APPR'D	DESCRIPTION	SCALE	
				10.10.2003	bak		<b>C65-Hera MMI Assembled B2 Layout TOP HIERARCHY LEVEL SCHEMATIC</b>	<b>1:1</b>	
5	13822	05.04.2004	rba						
4	12106	25.02.2004	olh	MP UC RD ED AAL					
3	10890	14.01.2004	olh						
2	9990	26.11.2003	olh						
1	8058	10.10.2003	olh		Siemens AG		53598	netlist1	
								( Created by BOM number: A5B00900131452-13822 )	

Proprietary data, company confidential.  
All rights reserved

Als Betriebsgeheimnis anvertraut  
Alle Rechte vorbehalten

	1	2	3	4	5	
	<p>C2801 /sheet1 9 C  R2801 /sheet1 7 A  R2802 /sheet1 8 A  R2803 /sheet1 8 A  R2804 /sheet1 9 A  R2805 /sheet1 9 A  R2806 /sheet1 10 A  TP2805 /sheet1 9 A  TP2806 /sheet1 10 A  TP2803 /sheet1 8 A  TP2801 /sheet1 7 A  TP2804 /sheet1 9 A  TP2802 /sheet1 8 A  V2801 /sheet1 7 B  V2802 /sheet1 8 B  V2803 /sheet1 8 B  V2804 /sheet1 9 B  V2805 /sheet1 9 B  V2806 /sheet1 10 B</p>					A
						B
						C
						D
						E

				DATE	10.10.2003	<b>C65-Hera MMI Assembled  B2 Layout  TOP HIERARCHY LEVEL  SCHEMATIC</b>	<b>1:1</b>
				USER	bak		
				APPR'D			
5	13822	05.04.2004	rba				
4	12106	25.02.2004	olh	MP UC RD ED AAL			
3	10890	14.01.2004	olh	Siemens AG		53598	poslist1
2	9990	26.11.2003	olh				
1	8058	10.10.2003	olh				
VERS.	CHANGE NUMBER	DATE	NAME	( Created by BOM number: A5B00900131452-13822 )			



	1	2	3	4	5	6	7	8	9	10		
1.5V_DSP /sheet6 7 C /sheet7 8 B	/sheet5 13 E /sheet8 15 F	/sheet3 3 C /sheet3 13 C	CKE /sheet6 10 E /sheet6 15 E /sheet5 7 G	DISPLAY_RESET /sheet4 13 D /sheet4 10 D /sheet5 6 A /sheet8 10 A	IR_AC_RX /sheet5 14 E /sheet9 10 E	MICBIAS_F /sheet9 5 D /sheet8 5 F /sheet7 8 E	/sheet5 13 C /sheet7 3 F /sheet7 7 F	RF_AFC /sheet4 4 B /sheet4 2 B /sheet5 2 E /sheet1 15 B	/sheet2 2 E /sheet1 15 C	TBAT /sheet5 9 B /sheet5 13 A	VCXOEN_UC /sheet5 1 E /sheet7 3 D	/sheet6 12 D /sheet6 12 A /sheet5 7 G
1.5V_UC /sheet6 7 D /sheet6 2 C /sheet7 8 B	AC_TX /sheet5 13 E /sheet8 15 F	CAMERA_DATA_CLK /sheet3 13 B /sheet3 2 D	CLK32 /sheet3 7 E /sheet5 5 B	DISPLAY_RS /sheet4 13 D /sheet4 10 D /sheet3 2 F /sheet8 10 A	IR_AC_TX /sheet5 14 E /sheet9 14 E	MICEA /sheet8 6 G /sheet8 9 E /sheet7 2 E	PM_I2S_DAC /sheet5 13 C /sheet7 3 F	RF_ANT_DET /sheet4 2 D /sheet4 4 D /sheet5 6 A	RF_STR /sheet4 2 A /sheet4 4 A /sheet5 7 B /sheet1 15 C	TVCO /sheet4 2 D /sheet4 4 D /sheet5 9 B /sheet5 14 A /sheet1 15 B	VDD_AFC /sheet6 4 B /sheet7 8 C	VDD_BRIGHT /sheet2 9 D /sheet1 9 F /sheet1 9 A /sheet1 9 A /sheet1 8 B /sheet1 11 D /sheet1 7 C /sheet1 9 B /sheet1 8 E /sheet1 9 A
1.8V_CIF /sheet3 2 A /sheet7 10 B	ADV /sheet6 15 E /sheet6 12 A /sheet5 6 G	CAMERA_HSYNC /sheet3 3 C /sheet3 13 C	CS3 /sheet6 15 F /sheet5 7 G	DISP_CS1 /sheet3 4 G /sheet5 2 C	KB_ON_OFF /sheet9 8 B /sheet7 2 C	MON1 /sheet5 3 D	PM_I2S_WA0 /sheet5 13 C /sheet7 7 F /sheet7 3 F	RF_BAND_SW /sheet4 2 F /sheet4 4 F /sheet5 6 B /sheet1 6 F	RF_TXONPA /sheet4 2 D /sheet4 4 D /sheet5 5 B /sheet1 1 F	TX /sheet8 12 F /sheet8 11 E /sheet8 9 E	TX_GSM_OUT /sheet1 1 C /sheet1 6 F	VDD_BT /sheet7 8 C
1.8V_MEM1 /sheet6 13 F /sheet6 7 E /sheet6 13 F /sheet4 13 C /sheet4 10 C /sheet7 8 B /sheet7 10 B	AKKU_TYP /sheet5 13 A /sheet3 3 B	CAMERA_I2C_CLK /sheet3 8 E /sheet3 13 C	CS_FLASH /sheet6 12 A /sheet5 7 G	EXTBOOST_EN /sheet7 11 D /sheet7 8 D	KP_IN0 /sheet5 5 G /sheet9 8 B /sheet9 13 B	MON2 /sheet5 3 D	PM_INT /sheet5 13 D /sheet7 7 F	PM_RESET_N /sheet5 3 E /sheet7 7 C	RF_CLK /sheet4 4 A /sheet4 2 A /sheet5 7 B /sheet1 15 C	RX /sheet8 12 F /sheet8 9 E	TX_PCN_OUT /sheet1 1 C /sheet1 6 F	VDD_CAMERA /sheet3 6 F /sheet3 13 C /sheet3 13 C /sheet3 14 E
1.8V_MEM2 /sheet6 11 A /sheet6 12 B /sheet6 9 B /sheet6 8 A /sheet7 7 D /sheet7 10 B /sheet7 8 B	BATT+ /sheet4 10 E /sheet4 13 E /sheet3 10 E /sheet5 15 B /sheet1 6 E /sheet1 1 E	CAMERA_I2C_DATA /sheet3 8 F /sheet3 13 C	CS_SDRAM /sheet6 12 D /sheet5 7 G	FLASH_EN /sheet5 13 F /sheet8 8 F	KP_IN1 /sheet5 5 G /sheet9 8 B /sheet9 14 B /sheet7 6 C	MONO1_LP_OUT /sheet7 6 E /sheet7 3 E	PM_RF2_EN /sheet5 6 B /sheet5 3 C	RF_DAT /sheet4 4 A /sheet4 2 A /sheet5 7 B /sheet1 15 C	SDCLKI /sheet6 15 E /sheet6 8 D /sheet5 6 G	USB_D+ /sheet5 13 C /sheet8 15 F	USB_D- /sheet5 13 C /sheet8 15 F	VDD_CHARGE /sheet7 3 D /sheet7 9 G
2.65V /sheet6 2 C /sheet6 5 B /sheet6 4 B /sheet6 4 B /sheet6 7 D /sheet5 10 A /sheet5 3 F /page1 2 A /sheet9 10 F /sheet8 14 E /sheet8 10 G /sheet8 3 B /sheet7 8 B /sheet7 3 D	BATT+_F /sheet9 14 E /sheet9 2 B /sheet9 5 A	CAM_SENSOR_PD /sheet3 6 E /sheet3 11 E	CTS /sheet8 9 E /sheet8 12 F	GND_MIC /sheet9 4 E /sheet8 9 E /sheet7 7 E /sheet7 7 G	KP_IN2 /sheet5 5 G /sheet9 8 B /sheet9 13 B	MONO2_LP_OUT /sheet7 6 E /sheet7 3 E	PM_RINGIN /sheet5 11 B /sheet7 3 E	RF_FE_DTR_DCS /sheet4 2 C /sheet4 4 C	SDCLKO /sheet6 15 E /sheet6 8 E /sheet5 6 G	SENSE_IN1 /sheet7 3 D /sheet7 11 F	SENSE_IN2 /sheet7 3 D /sheet7 11 F	VDD_RF1 /sheet4 4 E /sheet4 2 E /sheet1 8 F /sheet1 11 A /sheet7 8 C
2.9V /sheet6 2 B /sheet4 13 C /sheet4 10 C /sheet3 7 B /sheet9 8 C /sheet8 10 B /sheet7 8 B	BB_PM_SIN26M /sheet4 4 C /sheet4 2 C /sheet1 15 C /sheet7 3 E	CHARGE_CNTRL /sheet7 10 H /sheet7 6 D	DB_ETMCLK /sheet5 3 D	HF_OUT /sheet2 4 C /sheet1 1 D	KP_IN3 /sheet5 5 G /sheet9 8 B /sheet9 13 B	MONO2_OUT /sheet9 6 G /sheet7 8 E	PM_RTC_INT /sheet3 3 E /sheet7 3 C	RF_FE_DTR_GSM /sheet4 4 C /sheet4 2 C /sheet5 6 B /sheet1 1 D	SIM_CLK /sheet5 11 A /sheet10 7 E	VAUDREGA /sheet7 8 C /sheet7 3 E /sheet7 3 C /sheet7 3 C	VDD_RF2 /sheet4 2 E /sheet4 4 E /sheet1 7 A /sheet7 8 C	
2.9V_CIF /sheet3 8 B /sheet3 3 A /sheet3 3 A /sheet3 6 D /sheet3 3 E /sheet3 6 D /sheet3 3 E	BC0 /sheet6 10 D /sheet6 15 E /sheet5 7 G	CHARGE_SOURCE /sheet7 10 H /sheet7 6 D	DB_RTCK /sheet5 2 D	HW_DET_BAND_SEL /sheet5 2 G /sheet5 3 D	KP_IN4 /sheet5 3 F /sheet9 8 B /sheet9 14 B	PHANTOM_BUF_OUT /sheet8 9 E /sheet7 6 E	PM_SSC_CS /sheet5 6 B /sheet7 4 F	RF_I /sheet4 2 B /sheet4 4 B /sheet5 8 B /sheet1 15 D	SIM_IO /sheet5 11 B /sheet10 7 E	VBOOST /sheet4 10 D /sheet4 13 D /sheet9 8 B /sheet8 10 B /sheet7 11 D	VDD_RTC /sheet6 2 B /sheet7 2 C /sheet7 8 B	
A(0:24) /sheet6 15 E /sheet6 10 D /sheet6 8 F /sheet5 12 G	BC1 /sheet6 10 D /sheet6 15 E /sheet5 7 G	CIF_CS /sheet3 7 C /sheet5 6 A	DB_TDI /sheet5 2 C /page1 4 A	HW_DET_MOB_TYPE1 /sheet5 2 F /sheet5 3 D	KP_OUT0 /sheet5 4 F /sheet9 8 B	PIXEL_DATA0 /sheet3 3 C /sheet3 13 B	PM_SSC_MRST /sheet5 14 D /sheet7 4 F	RF_IX /sheet4 2 B /sheet4 4 B /sheet5 8 B /sheet1 15 D	SIM_RST /sheet5 11 B /sheet10 7 E	VBOOST_FB /sheet4 10 D /sheet4 13 D /sheet9 8 B /sheet8 10 B /sheet7 11 D	VDD_SIM /sheet7 8 B /sheet10 7 E	
AC_CTS /sheet5 13 E /sheet8 15 F	BFCKLO /sheet6 13 B /sheet5 6 G	CIF_CLK /sheet3 7 D /sheet3 3 F /sheet5 2 C	DB_TDO /sheet5 2 C	HW_DET_MOB_TYPE2 /sheet5 2 F /sheet5 3 D	KP_OUT1 /sheet5 4 F /sheet9 8 B	PIXEL_DATA1 /sheet3 3 C /sheet3 13 B	PM_SSC_SCLK /sheet5 14 D /sheet7 4 F	RF_QX /sheet4 4 B /sheet4 2 B /sheet5 8 B /sheet1 15 D	STEPDOWN_GND /sheet7 7 F /sheet7 10 C /sheet7 3 B /sheet7 10 C /sheet7 11 C	VBUCK /sheet7 11 C /sheet7 11 C /sheet7 9 D	VDD_USB /sheet6 2 C /sheet8 13 E /sheet7 8 B	
AC_DCD /sheet5 5 B /sheet8 15 F /sheet8 8 G	BFCLKI /sheet6 13 B /sheet5 6 G	CIF_CS_DISPLAY /sheet3 7 C /sheet5 7 A	DB_TRST /sheet5 2 C /page1 4 B	HW_DET_MOB_TYPE3 /sheet5 2 F /sheet5 3 D	KP_OUT2 /sheet5 4 E /sheet9 8 B	PIXEL_DATA2 /sheet3 3 C /sheet3 13 B	PM_WADOG /sheet5 5 B /sheet7 3 D	RAS /sheet6 12 E /sheet6 15 E /sheet5 6 G	STEREO1_OUT /sheet8 9 E /sheet7 6 E	VBUCK_FB /sheet7 10 C /sheet7 3 C	VDD_VIBRA /sheet9 1 C /sheet9 2 B /sheet7 8 B	
AC_DCD /sheet5 5 B /sheet8 15 F /sheet8 8 G	BOOST_OUT /sheet7 10 E /sheet7 6 C	CIF_CS_DISPLAY /sheet3 7 C /sheet5 7 A	DB_TMS /sheet5 2 C /page1 4 B	HW_DET_MOB_TYPE4 /sheet5 2 F /sheet5 3 D	KP_OUT3 /sheet5 4 E /sheet9 13 B	PIXEL_DATA3 /sheet3 3 C /sheet3 13 B	POWER /sheet8 9 E /sheet7 9 F /sheet7 8 F	RF_RAMP1 /sheet4 2 C /sheet4 4 C /sheet5 7 A /sheet1 1 F	STEREO2_OUT /sheet8 9 E /sheet7 6 E	VBUCK_LX /sheet7 6 C /sheet7 10 C	VREFEXS_GND /sheet7 3 E /sheet7 3 G	
AC_MEM1 /sheet6 13 F /sheet6 7 E /sheet6 13 F /sheet4 13 C /sheet4 10 C /sheet7 8 B /sheet7 10 B	BATT+_F /sheet9 14 E /sheet9 2 B /sheet9 5 A	CIF_CS_DISPLAY /sheet3 7 C /sheet5 7 A	DB_TMS /sheet5 2 C /page1 4 B	HW_DET_MOB_TYPE5 /sheet5 3 D /sheet5 2 F	KP_OUT4 /sheet5 4 F /sheet9 8 B	PIXEL_DATA4 /sheet3 3 C /sheet3 13 B	PM_WADOG /sheet5 5 B /sheet7 3 D	RF_SIN26M /sheet4 2 C /sheet4 4 C	WR	VCC_LIGHT /sheet9 9 C	WAIT /sheet6 15 E /sheet6 13 B /sheet5 6 G	
AC_MEM2 /sheet6 11 A /sheet6 12 B /sheet6 9 B /sheet6 8 A /sheet7 7 D /sheet7 10 B /sheet7 8 B	BATT+_F /sheet9 14 E /sheet9 2 B /sheet9 5 A	CIF_CS_DISPLAY /sheet3 7 C /sheet5 7 A	DB_TMS /sheet5 2 C /page1 4 B	HW_DET_MOB_TYPE5 /sheet5 3 D /sheet5 2 F	KP_OUT4 /sheet5 4 F /sheet9 8 B	PIXEL_DATA4 /sheet3 3 C /sheet3 13 B	PM_WADOG /sheet5 5 B /sheet7 3 D	RF_SIN26M /sheet4 2 C /sheet4 4 C	WR	VCC_LIGHT /sheet9 9 C	WAIT /sheet6 15 E /sheet6 13 B /sheet5 6 G	
AC_MEM2 /sheet6 11 A /sheet6 12 B /sheet6 9 B /sheet6 8 A /sheet7 7 D /sheet7 10 B /sheet7 8 B	BATT+_F /sheet9 14 E /sheet9 2 B /sheet9 5 A	CIF_CS_DISPLAY /sheet3 7 C /sheet5 7 A	DB_TMS /sheet5 2 C /page1 4 B	HW_DET_MOB_TYPE5 /sheet5 3 D /sheet5 2 F	KP_OUT4 /sheet5 4 F /sheet9 8 B	PIXEL_DATA4 /sheet3 3 C /sheet3 13 B	PM_WADOG /sheet5 5 B /sheet7 3 D	RF_SIN26M /sheet4 2 C /sheet4 4 C	WR	VCC_LIGHT /sheet9 9 C	WAIT /sheet6 15 E /sheet6 13 B /sheet5 6 G	
AC_MEM2 /sheet6 11 A /sheet6 12 B /sheet6 9 B /sheet6 8 A /sheet7 7 D /sheet7 10 B /sheet7 8 B	BATT+_F /sheet9 14 E /sheet9 2 B /sheet9 5 A	CIF_CS_DISPLAY /sheet3 7 C /sheet5 7 A	DB_TMS /sheet5 2 C /page1 4 B	HW_DET_MOB_TYPE5 /sheet5 3 D /sheet5 2 F	KP_OUT4 /sheet5 4 F /sheet9 8 B	PIXEL_DATA4 /sheet3 3 C /sheet3 13 B	PM_WADOG /sheet5 5 B /sheet7 3 D	RF_SIN26M /sheet4 2 C /sheet4 4 C	WR	VCC_LIGHT /sheet9 9 C	WAIT /sheet6 15 E /sheet6 13 B /sheet5 6 G	
AC_MEM2 /sheet6 11 A /sheet6 12 B /sheet6 9 B /sheet6 8 A /sheet7 7 D /sheet7 10 B /sheet7 8 B	BATT+_F /sheet9 14 E /sheet9 2 B /sheet9 5 A	CIF_CS_DISPLAY /sheet3 7 C /sheet5 7 A	DB_TMS /sheet5 2 C /page1 4 B	HW_DET_MOB_TYPE5 /sheet5 3 D /sheet5 2 F	KP_OUT4 /sheet5 4 F /sheet9 8 B	PIXEL_DATA4 /sheet3 3 C /sheet3 13 B	PM_WADOG /sheet5 5 B /sheet7 3 D	RF_SIN26M /sheet4 2 C /sheet4 4 C	WR	VCC_LIGHT /sheet9 9 C	WAIT /sheet6 15 E /sheet6 13 B /sheet5 6 G	
AC_MEM2 /sheet6 11 A /sheet6 12 B /sheet6 9 B /sheet6 8 A /sheet7 7 D /sheet7 10 B /sheet7 8 B	BATT+_F /sheet9 14 E /sheet9 2 B /sheet9 5 A	CIF_CS_DISPLAY /sheet3 7 C /sheet5 7 A	DB_TMS /sheet5 2 C /page1 4 B	HW_DET_MOB_TYPE5 /sheet5 3 D /sheet5 2 F	KP_OUT4 /sheet5 4 F /sheet9 8 B	PIXEL_DATA4 /sheet3 3 C /sheet3 13 B	PM_WADOG /sheet5 5 B /sheet7 3 D	RF_SIN26M /sheet4 2 C /sheet4 4 C	WR	VCC_LIGHT /sheet9 9 C	WAIT /sheet6 15 E /sheet6 13 B /sheet5 6 G	
AC_MEM2 /sheet6 11 A /sheet6 12 B /sheet6 9 B /sheet6 8 A /sheet7 7 D /sheet7 10 B /sheet7 8 B	BATT+_F /sheet9 14 E /sheet9 2 B /sheet9 5 A	CIF_CS_DISPLAY /sheet3 7 C /sheet5 7 A	DB_TMS /sheet5 2 C /page1 4 B	HW_DET_MOB_TYPE5 /sheet5 3 D /sheet5 2 F	KP_OUT4 /sheet5 4 F /sheet9 8 B	PIXEL_DATA4 /sheet3 3 C /sheet3 13 B	PM_WADOG /sheet5 5 B /sheet7 3 D	RF_SIN26M /sheet4 2 C /sheet4 4 C	WR	VCC_LIGHT /sheet9 9 C	WAIT /sheet6 15 E /sheet6 13 B /sheet5 6 G	
AC_MEM2 /sheet6 11 A /sheet6 12 B /sheet6 9 B /sheet6 8 A /sheet7 7 D /sheet7 10 B /sheet7 8 B	BATT+_F /sheet9 14 E /sheet9 2 B /sheet9 5 A	CIF_CS_DISPLAY /sheet3 7 C /sheet5 7 A	DB_TMS /sheet5 2 C /page1 4 B	HW_DET_MOB_TYPE5 /sheet5 3 D /sheet5 2 F	KP_OUT4 /sheet5 4 F /sheet9 8 B	PIXEL_DATA4 /sheet3 3 C /sheet3 13 B	PM_WADOG /sheet5 5 B /sheet7 3 D	RF_SIN26M /sheet4 2 C /sheet4 4 C	WR	VCC_LIGHT /sheet9 9 C	WAIT /sheet6 15 E /sheet6 13 B /sheet5 6 G	
AC_MEM2 /sheet6 11 A /sheet6 12 B /sheet6 9 B /sheet6 8 A /sheet7 7 D /sheet7 10 B /sheet7 8 B	BATT+_F /sheet9 14 E /sheet9 2 B /sheet9 5 A	CIF_CS_DISPLAY /sheet3 7 C /sheet5 7 A	DB_TMS /sheet5 2 C /page1 4 B	HW_DET_MOB_TYPE5 /sheet5 3 D /sheet5 2 F	KP_OUT4 /sheet5 4 F /sheet9 8 B	PIXEL_DATA4 /sheet3 3 C /sheet3 13 B	PM_WADOG /sheet5 5 B /sheet7 3 D	RF_SIN26M /sheet4 2 C /sheet4 4 C	WR	VCC_LIGHT /sheet9 9 C	WAIT /sheet6 15 E /sheet6 13 B /sheet5 6 G	
AC_MEM2 /sheet6 11 A /sheet6 12 B /sheet6 9 B /sheet6 8 A /sheet7 7 D /sheet7 10 B /sheet7 8 B	BATT+_F /sheet9 14 E /sheet9 2 B /sheet9 5 A	CIF_CS_DISPLAY /sheet3 7 C /sheet5 7 A	DB_TMS /sheet5 2 C /page1 4 B	HW_DET_MOB_TYPE5 /sheet5 3 D /sheet5 2 F	KP_OUT4 /sheet5 4 F /sheet9 8 B	PIXEL_DATA4 /sheet3 3 C /sheet3 13 B	PM_WADOG /sheet5 5 B /sheet7 3 D	RF_SIN26M /sheet4 2 C /sheet4 4 C	WR	VCC_LIGHT /sheet9 9 C	WAIT /sheet6 15 E /sheet6 13 B /sheet5 6 G	
AC_MEM2 /sheet6 11 A /sheet6 12 B /sheet6 9 B /sheet6 8 A /sheet7 7 D /sheet7 10 B /sheet7 8 B	BATT+_F /sheet9 14 E /sheet9 2 B /sheet9 5 A	CIF_CS_DISPLAY /sheet3 7 C /sheet5 7 A	DB_TMS /sheet5 2 C /page1 4 B	HW_DET_MOB_TYPE5 /sheet5 3 D /sheet5 2 F	KP_OUT4 /sheet5 4 F /sheet9 8 B	PIXEL_DATA4 /sheet3 3 C /sheet3 13 B	PM_WADOG /sheet5 5 B /sheet7 3 D	RF_SIN26M /sheet4 2 C /sheet4 4 C	WR	VCC_LIGHT /sheet9 9 C	WAIT /sheet6 15 E /sheet6 13 B /sheet5 6 G	
AC_MEM2 /sheet6 11 A /sheet6 12 B /sheet6 9 B /sheet6 8 A /sheet7 7 D /sheet7 10 B /sheet7 8 B	BATT+_F /sheet9 14 E /sheet9 2 B /sheet9 5 A	CIF_CS_DISPLAY /sheet3 7 C /sheet5 7 A	DB_TMS /sheet5 2 C /page1 4 B	HW_DET_MOB_TYPE5 /sheet5 3 D /sheet5 2 F	KP_OUT4 /sheet5 4 F /sheet9 8 B	PIXEL_DATA4 /sheet3 3 C /sheet3 13 B	PM_WADOG /sheet5 5 B /sheet7 3 D	RF_SIN26M /sheet4 2 C /sheet4 4 C	WR	VCC_LIGHT /sheet9 9 C	WAIT /sheet6 15 E /sheet6 13 B /sheet5 6 G	
AC_MEM2 /sheet6 11 A /sheet6 12 B /sheet6 9 B /sheet6 8 A /sheet7 7 D /sheet7 10 B /sheet7 8 B	BATT+_F /sheet9 14 E /sheet9 2 B /sheet9 5 A	CIF_CS_DISPLAY /sheet3 7 C /sheet5 7 A	DB_TMS /sheet5 2 C /page1 4 B	HW_DET_MOB_TYPE5 /sheet5 3 D /sheet5 2 F	KP_OUT4 /sheet5 4 F /sheet9 8 B	PIXEL_DATA4 /sheet3 3 C /sheet3 13 B	PM_WADOG /sheet5 5 B /sheet7 3 D	RF_SIN26M /sheet4 2 C /sheet4 4 C	WR	VCC_LIGHT /sheet9 9 C	WAIT /sheet6 15 E /sheet6 13 B /sheet5 6 G	
AC_MEM2 /sheet6 11 A /sheet6 12 B /sheet6 9 B /sheet6 8 A /sheet7 7 D /sheet7 10 B /sheet7 8 B	BATT+_F /sheet9 14 E /sheet9 2 B /sheet9 5 A	CIF_CS_DISPLAY /sheet3 7 C /sheet5 7 A	DB_TMS /sheet5 2 C /page1 4 B	HW_DET_MOB_TYPE5 /sheet5 3 D /sheet5 2 F	KP_OUT4 /sheet5 4 F /sheet9 8 B	PIXEL_DATA4 /sheet3 3 C /sheet3 13 B	PM_WADOG /sheet5 5 B /sheet7 3 D	RF_SIN26M /sheet4 2 C /sheet4 4 C	WR	VCC_LIGHT /sheet9 9 C	WAIT /sheet6 15 E /sheet6 13 B /sheet5 6 G	
AC_MEM2 /sheet6 11 A /sheet6 12 B /sheet6 9 B /sheet6 8 A /sheet7 7 D /sheet7 10 B /sheet7 8 B	BATT+_F /sheet9 14 E /sheet9 2 B /sheet9 5 A	CIF_CS_DISPLAY /sheet3 7 C /sheet5 7 A	DB_TMS /sheet5 2 C /page1 4 B	HW_DET_MOB_TYPE5 /sheet5 3 D /sheet5 2 F	KP_OUT4 /sheet5 4 F /sheet9 8 B	PIXEL_DATA4 /sheet3 3 C /sheet3 13 B	PM_WADOG /sheet5 5 B /sheet7 3 D	RF_SIN26M /sheet4 2 C /sheet4 4 C	WR	VCC_LIGHT /sheet9 9 C	WAIT /sheet6 15 E /sheet6 13 B /sheet5 6 G	
AC_MEM2 /sheet6 11 A /sheet6 12 B /sheet6 9 B /sheet6 8 A /sheet7 7 D /sheet7 10 B /sheet7 8 B	BATT+_F /sheet9 14 E /sheet9 2 B /sheet9 5 A	CIF_CS_DISPLAY /sheet3 7 C /sheet5 7 A	DB_TMS /sheet5 2 C /page1 4 B	HW_DET_MOB_TYPE5 /sheet5 3 D /sheet5 2 F	KP_OUT4 /sheet5 4 F /sheet9 8 B	PIXEL_DATA4 /sheet3 3 C /sheet3 13 B	PM_WADOG /sheet5 5 B /sheet7 3 D	RF_SIN26M /sheet4 2 C /sheet4 4 C	WR	VCC_LIGHT /sheet9 9 C	WAIT /sheet6 15 E /sheet6 13 B /sheet5 6 G	
AC_MEM2 /sheet6 11 A /sheet6 12 B /sheet6 9 B /sheet6 8 A /sheet7 7 D /sheet7 10 B /sheet7 8 B	BATT+_F /sheet9 14 E /sheet9 2 B /sheet9 5 A	CIF_CS_DISPLAY /sheet3 7 C /sheet5 7 A	DB_TMS /sheet5 2 C /page1 4 B	HW_DET_MOB_TYPE5 /sheet5 3 D /sheet5 2 F	KP_OUT4 /sheet5 4 F /sheet9 8 B	PIXEL_DATA4 /sheet3 3 C /sheet3 13 B	PM_WADOG /sheet5 5 B /sheet7 3 D	RF_SIN26M /sheet4 2 C /sheet4 4 C	WR	VCC_LIGHT /sheet9 9 C	WAIT /sheet6 15 E /sheet6 13 B /sheet5 6 G	
AC_MEM2 /sheet6 11 A /sheet6 12 B /sheet6 9 B /sheet6 8 A /sheet7 7 D /sheet7 10 B /sheet7 8 B	BATT+_F /sheet9 14 E /sheet9 2 B /sheet9 5 A	CIF_CS_DISPLAY /sheet3 7 C /sheet5 7 A	DB_TMS /sheet5 2 C /page1 4 B	HW_DET_MOB_TYPE5 /sheet5 3 D /sheet5 2 F	KP_OUT4 /sheet5 4 F /sheet9 8 B	PIXEL_DATA4 /sheet3 3 C /sheet3 13 B	PM_WADOG /sheet5 5 B /sheet7 3 D	RF_SIN26M /sheet4 2 C /sheet4 4 C	WR	VCC_LIGHT /sheet9 9 C	WAIT /sheet6 15 E /sheet6 13 B /sheet5 6 G	
AC_MEM2 /sheet6 11 A /sheet6 12 B /sheet6 9 B /sheet6 8 A /sheet7 7 D /sheet7 10 B /sheet7 8 B	BATT+_F /sheet9 14 E /sheet9 2 B /sheet9 5 A	CIF_CS_DISPLAY /sheet3 7 C /sheet5 7 A	DB_TMS /sheet5 2 C /page1 4 B	HW_DET_MOB_TYPE5 /sheet5 3 D /sheet5 2 F	KP_OUT4 /sheet5 4 F /sheet9 8 B	PIXEL_DATA4 /sheet3 3 C /sheet3 13 B	PM_WADOG /sheet5 5 B /sheet7 3 D	RF_SIN26M /sheet4 2 C /sheet4 4 C	WR	VCC_LIGHT /sheet9 9 C	WAIT /sheet6 15 E /sheet6 13 B /sheet5 6 G	
AC_MEM2 /sheet6 11 A /sheet6 12 B /sheet6 9 B /sheet6 8 A /sheet7 7 D /sheet7 10 B /sheet7 8 B	BATT+_F /sheet9 14 E /sheet9 2 B /sheet9 5 A	CIF_CS_DISPLAY /sheet3 7 C /sheet5 7 A	DB_TMS /sheet5 2 C /page1 4 B	HW_DET_MOB_TYPE5 /sheet5 3 D /sheet5 2 F	KP_OUT4 /sheet5 4 F /sheet9 8 B	PIXEL_DATA4 /sheet3 3 C /sheet3 13 B	PM_WADOG /sheet5 5 B /sheet7 3 D	RF_SIN26M /sheet4 2 C /sheet4 4 C	WR	VCC_LIGHT /sheet9 9 C	WAIT /sheet6 15 E /sheet6 13 B /sheet5 6 G	
AC_MEM2 /sheet6 11 A /sheet6 12 B /sheet6 9 B /sheet6 8 A /sheet7 7 D /sheet7 10 B /sheet7 8 B	BATT+_F /sheet9 14 E /sheet9 2 B /sheet9 5 A	CIF_CS_DISPLAY /sheet3 7 C /sheet5 7 A	DB_TMS /sheet5 2 C /page1 4 B	HW_DET_MOB_TYPE5 /sheet5 3 D /sheet5								

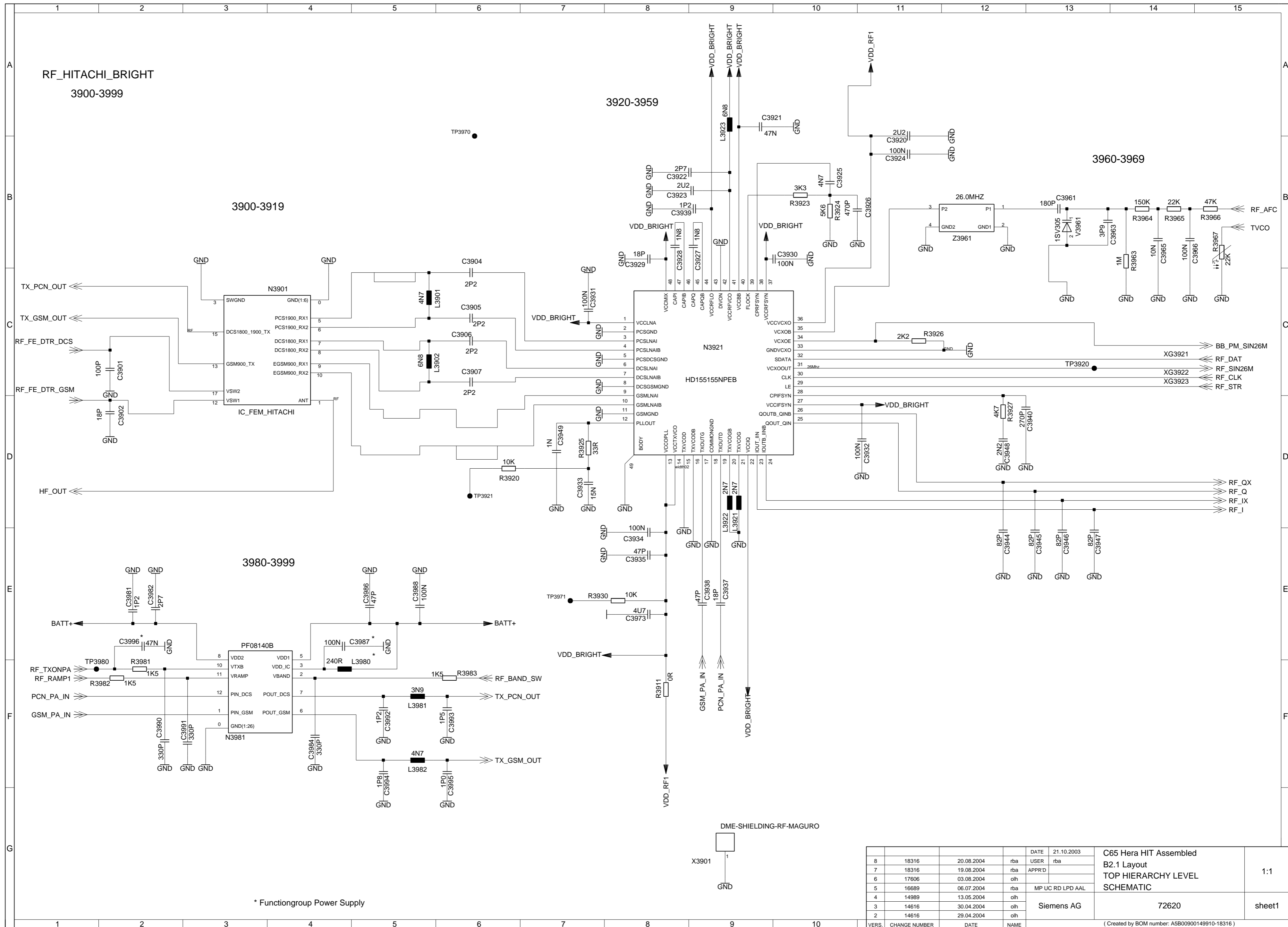


Proprietary data, company confidential.  
All rights reserved

Als Betriebsgeheimnis anvertraut  
Alle Rechte vorbehalten

	1	2	3	4	5	6	7	8	9	10
A	C1000 /sheet5 3 E	C1330-2 /sheet7 6 B	C2235 /sheet8 10 B	C3991 /sheet1 3 F	R1320 /sheet7 7 D	R3801 /sheet2 8 D	X1604 /sheet10 2 G			
	C1001 /sheet5 2 E	C1331-1 /sheet7 7 B	C2320 /sheet10 7 B	C3992 /sheet1 5 F	R1328 /sheet7 7 E	R3802 /sheet2 9 D	X1700 /sheet9 1 G			
	C1002 /sheet5 1 E	C1331-2 /sheet7 7 B	C2321 /sheet10 5 A	C3993 /sheet1 6 F	R1340 /sheet7 11 D	R3803 /sheet2 10 C	X2200 /sheet8 9 C			
	C1003 /sheet5 1 E	C1332-2 /sheet7 7 B	C2322 /sheet10 5 A	C3994 /sheet1 5 F	R1341 /sheet7 11 D	R3805 /sheet2 9 C	X2202 /sheet8 7 A			
	C1004 /sheet5 8 A	C1332-1 /sheet7 7 B	C2630 /sheet9 14 E	C3995 /sheet1 6 F	R1342 /sheet7 9 D	R3901 /sheet1 2 C	X2705 /sheet9 11 B			
	C1005 /sheet5 6 A	C1333 /sheet7 6 E	C2631 /sheet9 10 F	C3996 /sheet1 2 E	R1343 /sheet7 10 E	R3902 /sheet1 2 D	X3551 /sheet3 7 G			
	C1008 /sheet5 14 D	C1334 /sheet7 6 E	C2632 /sheet9 11 F	C3997 /sheet1 2 E	R1344 /sheet7 11 F	R3903 /sheet1 5 C	X3552 /sheet3 8 G			
	C1009 /sheet5 15 D	C1336 /sheet7 10 D	C2633 /sheet9 13 E	D1000-2 /sheet6 1 E	R1353 /sheet7 9 G	R3904 /sheet1 5 C	X3600 /sheet3 10 C			
	C1011 /sheet5 10 B	C1338 /sheet7 8 B	C2634 /sheet9 10 E	D1000-1 /sheet5 12 F	R1378 /sheet7 10 B	R3905 /sheet1 5 C	X3800 /sheet2 8 C			
	C1012 /sheet5 14 B	C1339 /sheet7 7 C	C2635 /sheet9 13 E	D1000-3 /sheet5 1 A	R1399 /sheet7 7 C	R3906 /sheet1 5 C	X3901 /sheet1 9 G			
	C1013 /sheet5 14 C	C1340 /sheet7 7 C	C2637 /sheet9 12 E	D1201 /sheet6 10 F	R1500 /sheet8 4 F	R3907 /sheet1 5 D	Z1000 /sheet5 2 E			
	C1014 /sheet5 15 C	C1341 /sheet7 7 C	C2821 /sheet10 7 C	D1203 /sheet6 10 D	R1501 /sheet8 4 F	R3908 /sheet1 5 D	Z1500 /sheet8 13 F			
	C1018 /sheet5 13 E	C1342 /sheet7 7 C	C2822 /sheet10 5 C	D1300 /sheet7 4 F	R1502 /sheet8 5 F	R3909 /sheet1 6 D	Z3961 /sheet1 12 B			
	C1019 /sheet5 13 E	C1343 /sheet7 7 C	C2823 /sheet10 5 C	D3601 /sheet3 4 F	R1503 /sheet8 8 E	R3910 /sheet1 6 D				
	C1020 /sheet5 13 E	C1344 /sheet7 8 B	C3600 /sheet3 3 B	L1300 /sheet7 2 B	R1504 /sheet8 8 E	R3911 /sheet1 8 F				
	C1038 /sheet5 13 F	C1345 /sheet7 8 C	C3601 /sheet3 3 B	L1301 /sheet7 10 C	R1505 /sheet8 6 F	R3920 /sheet1 6 D				
	C1039 /sheet5 11 A	C1346 /sheet7 7 E	C3602 /sheet3 3 B	L1302 /sheet7 10 D	R1506 /sheet8 9 G	R3922 /sheet1 11 A				
	C1040 /sheet5 3 E	C1347 /sheet7 7 E	C3603 /sheet3 3 B	L1303 /sheet7 2 B	R1508 /sheet8 8 F	R3923 /sheet1 10 B				
	C1110 /sheet5 5 C	C1348 /sheet7 7 E	C3604 /sheet3 10 F	L1318 /sheet7 10 A	R1509 /sheet8 14 D	R3924 /sheet1 10 B				
	C1120 /sheet6 2 C	C1349 /sheet7 4 E	C3605 /sheet3 11 C	L1320 /sheet7 7 C	R1510 /sheet8 14 E	R3925 /sheet1 7 D				
	C1121 /sheet6 2 C	C1350 /sheet7 7 F	C3606 /sheet3 11 E	L1331 /sheet7 10 D	R1511 /sheet8 14 E	R3926 /sheet1 11 C				
	C1122 /sheet6 2 B	C1352 /sheet7 11 D	C3607 /sheet3 11 F	L2633 /sheet9 13 E	R1512 /sheet8 7 D	R3927 /sheet1 12 D				
	C1123 /sheet6 3 B	C1354 /sheet7 11 C	C3608 /sheet3 12 F	L3803 /sheet2 10 D	R1514 /sheet8 11 D	R3928 /sheet1 6 B				
	C1124 /sheet6 3 B	C1355 /sheet7 11 D	C3609 /sheet3 13 F	L3811 /sheet2 6 C	R1515 /sheet8 12 D	R3929 /sheet1 7 B				
	C1125 /sheet6 3 B	C1356 /sheet7 11 D	C3610 /sheet3 2 C	L3901 /sheet1 5 C	R1516 /sheet8 11 D	R3930 /sheet1 8 E				
	C1126 /sheet6 4 C	C1357 /sheet7 10 D	C3611 /sheet3 2 D	L3902 /sheet1 5 C	R1524 /sheet8 6 G	R3931 /sheet1 7 B				
	C1127 /sheet6 4 C	C1358 /sheet7 11 D	C3621 /sheet3 3 B	L3921 /sheet1 9 D	R1525 /sheet8 6 F	R3962 /sheet1 13 C				
	C1128 /sheet6 5 C	C1360 /sheet7 10 F	C3803 /sheet2 10 D	L3922 /sheet1 9 D	R1591 /sheet8 9 E	R3963 /sheet1 14 C				
	C1129 /sheet6 5 B	C1361 /sheet7 10 F	C3804 /sheet2 11 C	L3923 /sheet1 9 A	R1612 /sheet10 4 E	R3964 /sheet1 14 B				
	C1130 /sheet6 5 C	C1362 /sheet7 11 F	C3805 /sheet2 8 D	L3924 /sheet1 9 E	R1613 /sheet10 4 E	R3965 /sheet1 14 B				
	C1131 /sheet6 6 D	C1381 /sheet7 4 E	C3811 /sheet2 5 D	L3980 /sheet1 4 F	R1614 /sheet10 7 E	R3966 /sheet1 15 B				
	C1132 /sheet6 6 D	C1382 /sheet7 4 E	C3812 /sheet2 6 D	L3981 /sheet1 5 F	R1615 /sheet10 4 E	R3967 /sheet1 15 C				
	C1133 /sheet6 7 D	C1383 /sheet7 2 E	C3901 /sheet1 2 C	L3982 /sheet1 5 F	R1703 /sheet9 5 F	R3981 /sheet1 2 F				
	C1134 /sheet6 7 D	C1384 /sheet7 2 E	C3902 /sheet1 2 D	N1330 /sheet7 11 D	R1704 /sheet9 5 F	R3982 /sheet1 2 F				
	C1135 /sheet6 7 D	C1385 /sheet7 2 E	C3903 /sheet1 5 D	N1501 /sheet8 11 E	R1901 /sheet9 4 D	R3983 /sheet1 6 F				
	C1136 /sheet6 6 E	C1386 /sheet7 2 E	C3904 /sheet1 6 C	N3600 /sheet3 11 F	R1902 /sheet9 4 E	S2700 /sheet9 13 B				
	C1137 /sheet6 6 E	C1387 /sheet7 4 E	C3905 /sheet1 6 C	N3901 /sheet1 4 C	R1926 /sheet9 5 D	TP1246 /sheet6 10 B				
	C1139 /sheet6 6 E	C1391 /sheet7 6 E	C3906 /sheet1 6 C	N3921 /sheet1 8 C	R1927 /sheet9 5 D	TP1247 /sheet6 8 A				
	C1140 /sheet6 2 C	C1399 /sheet7 6 E	C3907 /sheet1 6 C	N3981 /sheet1 3 F	R2100 /sheet9 2 B	TP3600 /sheet3 11 E				
	C1141 /sheet6 7 C	C1400 /sheet8 3 B	C3920 /sheet1 11 B	R101 /page1 3 C	R2101 /sheet9 1 C	TP3601 /sheet3 13 E				
	C1200 /sheet6 8 B	C1401 /sheet8 4 B	C3921 /sheet1 9 A	R1000 /sheet5 2 F	R2102 /sheet9 2 D	TP1022 /sheet5 9 B				
	C1201 /sheet6 9 B	C1402 /sheet8 4 B	C3922 /sheet1 8 B	R1001 /sheet5 2 G	R2103 /sheet9 3 C	TP1014 /sheet5 15 A				
	C1202 /sheet6 12 G	C1405 /sheet8 4 B	C3923 /sheet1 9 B	R1006 /sheet5 3 E	R2104 /sheet9 3 C	TP1012 /sheet5 13 A				
	C1203 /sheet6 12 G	C1426 /sheet8 2 B	C3924 /sheet1 11 B	R1012 /sheet5 7 B	R2200 /sheet8 8 B	TP1013 /sheet5 13 A				
	C1204 /sheet6 12 G	C1502 /sheet8 6 F	C3925 /sheet1 10 B	R1014 /sheet5 10 B	R2300 /sheet10 4 B	TP3970 /sheet1 6 B				
	C1205 /sheet6 12 G	C1504 /sheet8 4 D	C3926 /sheet1 11 B	R1015 /sheet5 9 B	R2301 /sheet10 4 C	TP3971 /sheet1 7 E				
	C1206 /sheet6 9 B	C1506 /sheet8 9 F	C3927 /sheet1 9 B	R1016 /sheet5 13 A	R2310 /sheet10 4 A	TP3921 /sheet1 6 D				
	C1207 /sheet6 13 G	C1507 /sheet8 6 D	C3928 /sheet1 8 B	R1018 /sheet5 13 A	R2311 /sheet10 6 B	TP3920 /sheet1 13 C				
	C1208 /sheet6 9 B	C1508 /sheet8 5 F	C3929 /sheet1 8 B	R1021 /sheet5 15 A	R2632 /sheet9 12 E	TP3980 /sheet1 2 F				
	C1209 /sheet6 9 B	C1509 /sheet8 6 F	C3930 /sheet1 10 B	R1022 /sheet5 15 B	R2635 /sheet9 13 E	TP1509 /sheet8 14 D				
	C1210 /sheet6 11 B	C1510 /sheet8 7 F	C3931 /sheet1 7 C	R1023 /sheet5 15 C	R2727 /sheet9 8 B	TP1321 /sheet7 7 C				
	C1211 /sheet6 9 B	C1512 /sheet8 7 F	C3932 /sheet1 11 D	R1024 /sheet5 15 D	R2728 /sheet9 8 C	TP1302 /sheet7 4 D				
	C1220 /sheet6 9 A	C1513 /sheet8 9 F	C3933 /sheet1 7 D	R1025 /sheet5 15 D	R2729 /sheet9 8 C	TP1308 /sheet7 8 B				
	C1301 /sheet7 2 B	C1514 /sheet8 8 F	C3934 /sheet1 8 E	R1026 /sheet5 3 C	R2820 /sheet10 8 C	TP1306 /sheet7 8 B				
	C1302 /sheet7 4 A	C1515 /sheet8 12 D	C3935 /sheet1 8 E	R1027 /sheet5 3 C	R2821 /sheet10 7 C	TP1317 /sheet7 8 B				
	C1303 /sheet7 4 B	C1522 /sheet8 5 F	C3936 /sheet1 9 F	R1028 /sheet5 3 C	R2872 /sheet10 4 C	TP1310 /sheet7 8 B				
	C1304-1 /sheet7 2 B	C1523 /sheet8 5 D	C3937 /sheet1 9 E	R1029 /sheet5 3 C	R3600 /sheet3 6 F	TP1312 /sheet7 8 B				
	C1304-2 /sheet7 2 B	C1524 /sheet8 7 F	C3938 /sheet1 9 E	R1030 /sheet5 5 A	R3601 /sheet3 6 F	TP1320 /sheet7 7 C				
	C1305 /sheet7 10 B	C1527 /sheet8 11 D	C3939 /sheet1 8 B	R1031 /sheet5 6 A	R3602 /sheet3 13 C	TP1307 /sheet7 8 B				
	C1306 /sheet7 3 B	C1528 /sheet8 14 D	C3940 /sheet1 13 D	R1032 /sheet5 7 B	R3603 /sheet3 3 D	TP1318 /sheet7 6 C				
	C1307 /sheet7 3 B	C1541 /sheet8 6 F	C3941 /sheet1 13 D	R1038 /sheet5 10 A	R3604 /sheet3 13 B	TP1327 /sheet7 10 C				
	C1308 /sheet7 3 D	C1601 /sheet10 4 F	C3942 /sheet1 13 D	R1039 /sheet5 9 A	R3605 /sheet3 13 B	TP1309 /sheet7 8 B				
	C1309 /sheet7 4 D	C1602 /sheet10 5 F	C3943 /sheet1 13 D	R1040 /sheet5 2 F	R3606 /sheet3 13 B	TP1334 /sheet7 7 C				
	C1310 /sheet7 4 D	C1603 /sheet10 5 F	C3944 /sheet1 12 E	R1041 /sheet5 3 F	R3607 /sheet3 13 B	TP1311 /sheet7 8 B				
	C1311 /sheet7 4 D	C1604 /sheet10 5 F	C3945 /sheet1 13 E	R1042 /sheet5 2 F	R3608 /sheet3 13 B	V1300 /sheet7 6 A				
	C1312 /sheet7 4 D	C1605 /sheet10 6 F	C3946 /sheet1 13 E	R1043 /sheet5 3 F	R3609 /sheet3 13 B	V1302 /sheet7 10 C				
	C1313 /sheet7 4 D	C1606 /sheet10 5 F	C3947 /sheet1 13 E	R1045 /sheet5 3 G	R3610 /sheet3 13 B	V1303 /sheet7 11 D				
	C1314 /sheet7 4 D	C1705 /sheet9 4 F	C3948 /sheet1 12 D	R1046 /sheet5 2 G	R3611 /sheet3 13 B	V1304 /sheet7 10 E				
	C1315-2 /sheet7 10 B	C1708 /sheet9 4 F	C3949 /sheet1 7 D	R1047 /sheet5 3 G	R3612 /sheet3 13 C	V1305-1 /sheet7 10 G				
	C1315-1 /sheet7 10 B	C1709 /sheet9 4 F	C3961 /sheet1 13 B	R1048 /sheet5 2 G	R3613 /sheet3 13 C	V1305-2 /sheet7 10 G				
	C1316 /sheet7 7 C	C1901 /sheet9 3 D	C3962 /sheet1 13 B	R1049 /sheet5 3 G	R3614 /sheet3 13 C	V1400 /sheet8 3 B				
	C1317 /sheet7 3 E	C1902 /sheet9 3 E	C3963 /sheet1 13 B	R1050 /sheet5 2 G	R3615 /sheet3 13 C	V1500 /sheet8 9 G				
	C1318-1 /sheet7 11 B	C1904 /sheet9 3 E	C3964 /sheet1 13 B	R1051 /sheet5 3 G	R3616 /sheet3 13 C	V1605 /sheet10 3 F				
	C1318-2 /sheet7 11 B	C2100 /sheet9 3 B	C3965 /sheet1 14 B	R1052 /sheet5 2 G	R3617 /sheet3 13 C	V2100 /sheet9 4 A				
	C1319 /sheet7 3 E	C2101 /sheet9 3 B	C3966 /sheet1 14 B	R1130 /sheet6 2 C	R3618 /sheet3 11 C	V2101 /sheet9 3 B				
	C1320 /sheet7 8 C	C2110 /sheet9 6 A	C3971 /sheet1 8 E	R1200 /sheet6 11 A	R3619 /sheet3 11 F	V2102 /sheet9 2 C				
	C1321 /sheet7 3 E	C2130 /sheet9 9 C	C3973 /sheet1 8 E	R1210 /sheet6 9 B	R3625 /sheet3 3 E	V2302-1 /sheet10 5 B				
	C1322 /sheet7 3 E	C2131 /sheet9 9 C	C3981 /sheet1 2 E	R1211 /sheet6 9 D	R3626 /sheet3 2 E	V2302-2 /sheet10 6 A				
	C1323 /sheet7 3 E	C2132 /sheet9 10 C	C3982 /sheet1 2 E	R1300 /sheet7 3 B	R3627 /sheet3 3 F	V2303 /sheet10 3 B				
	C1324 /sheet7 3 E	C2133 /sheet9 10 C	C3983 /sheet1 2 E	R1302 /sheet7 3 B	R3629 /sheet3 3 G	V2650 /sheet9 12 E				
	C1325 /sheet7 3 E	C2200 /sheet8 9 B	C3984 /sheet1 4 F	R1303 /sheet7 2 C	R3630 /sheet3 3 F	V2821-1 /sheet10 6 C				
	C1326 /sheet7 3 F	C2201 /sheet8 9 B	C3985 /sheet1 5 E	R1304 /sheet7 3 C	R3631 /sheet3 3 F	V2821-2 /sheet10 6 C				
	C1327 /sheet7 3 F	C2202 /sheet8 9 B	C3986 /sheet1 5 E	R1305 /sheet7 3 C	R3632 /sheet3 3 F	V3961 /sheet1 13 B				
	C1328 /sheet7 4 F	C2203 /sheet8 8 B	C3987 /sheet1 4 E	R1308 /sheet7 3 D	R3633 /sheet3 3 F	X1000 /sheet5 13 F				
	C1329-1 /sheet7 6 B	C2231 /sheet8 9 B	C3988 /sheet1 5 E	R1309 /sheet7 7 D	R3634 /sheet3 3 G	X1300 /sheet7 3 H				
	C1329-2 /sheet7 6 B	C2232 /sheet8 10 B	C3989 /sheet1 6 E	R1311 /sheet7 3 B	R3635 /sheet3 6 E	X1400 /sheet8 2 B				
	C1330-1 /sheet7 6 B	C2233 /sheet8 9 B	C3990 /sheet1 2 F	R1315 /sheet7 7 F	R3640 /sheet3 6 C	X1504 /sheet8 2 E				

VERS.	CHANGE NUMBER	DATE	NAME	DATE	21.10.2003	C65 Hera HIT Assembled B2.1 Layout TOP HIERARCHY LEVEL SCHEMATIC	1:1
8	18316	20.08.2004	rba	USER	rba		
7	18316	19.08.2004	rba	APPR'D			
6	17606	03.08.2004	ohl				
5	16689	06.07.2004	rba		MP UC RD LPD AAL		
4	14989	13.05.2004	ohl				
3	14616	30.04.2004	ohl				
2	14616	29.04.2004	ohl				



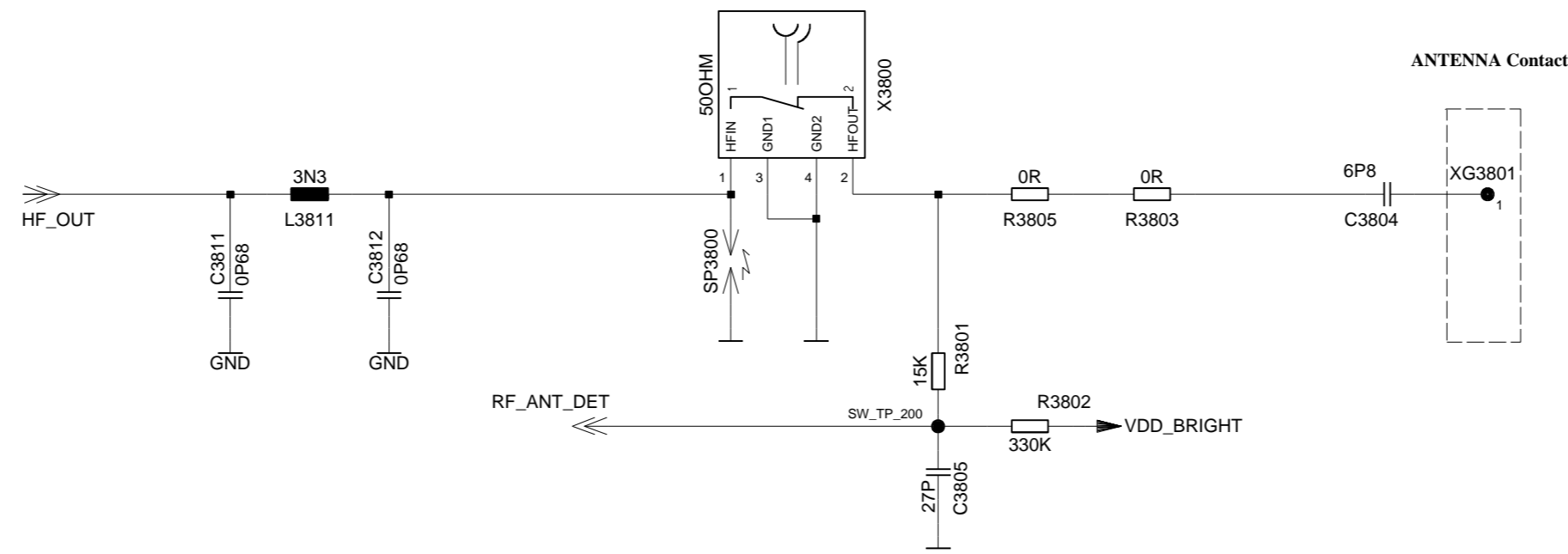
\* Functiongroup Power Supply

VERS.	CHANGE NUMBER	DATE	NAME	DATE	USER	MP UC RD LPD AAL	Siemens AG	72620	sheet1
8	18316	20.08.2004	rba	21.10.2003	rba				
7	18316	19.08.2004	rba		APPR'D				
6	17606	03.08.2004	ohl						
5	16689	06.07.2004	rba						
4	14989	13.05.2004	ohl						
3	14616	30.04.2004	ohl						
2	14616	29.04.2004	ohl						

C65 Hera HIT Assembled  
B2.1 Layout  
TOP HIERARCHY LEVEL  
SCHEMATIC

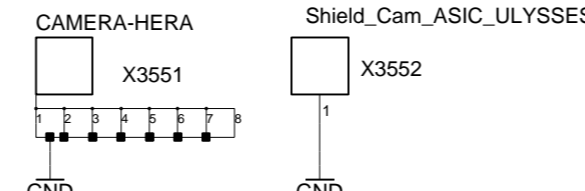
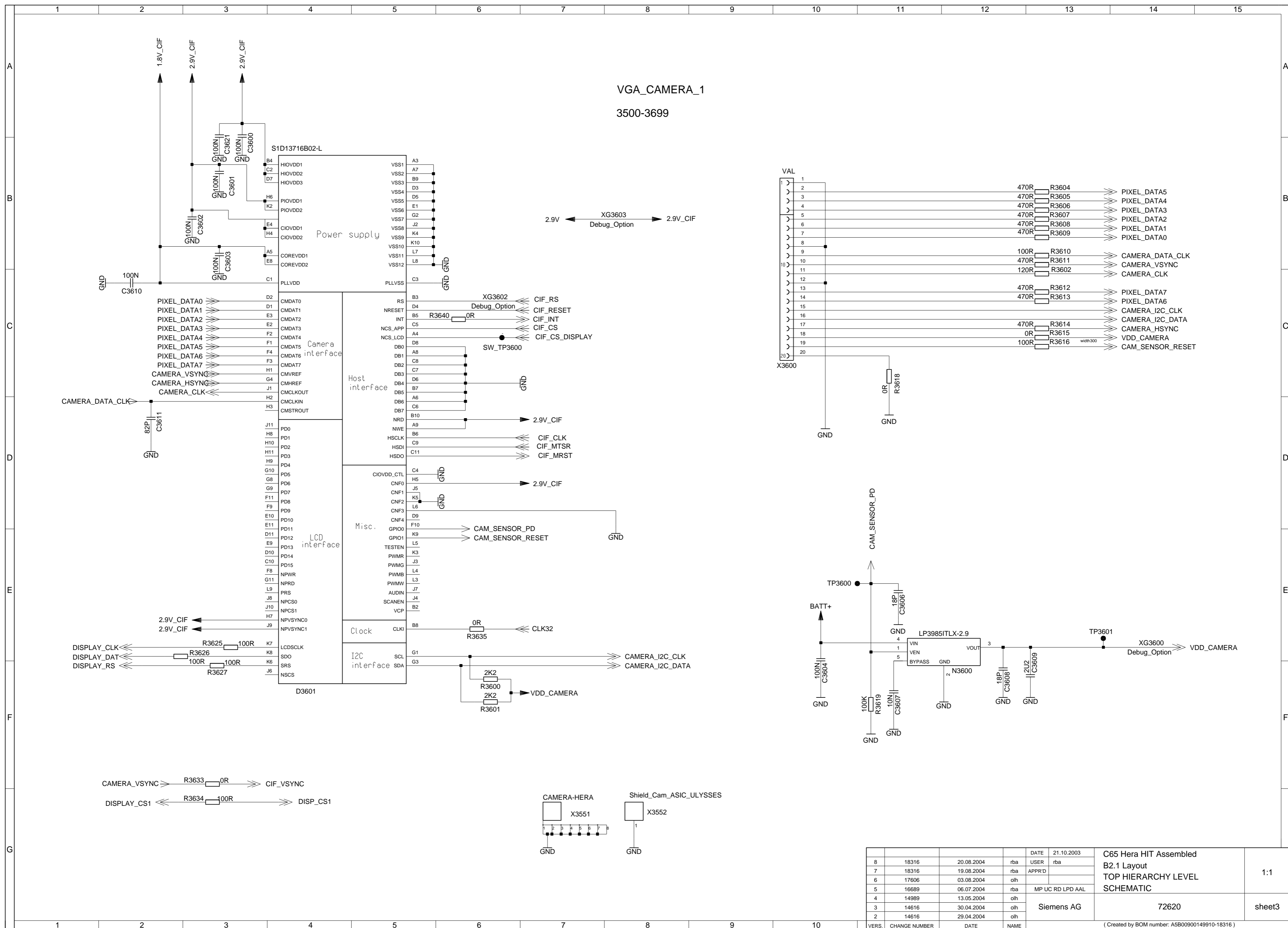
( Created by BOM number: A5B00900149910-18316 )

ANTENNA\_CIRCUIT  
3800-3849



VERS.	CHANGE NUMBER	DATE	NAME	DATE	USER	MP UC RD LPD AAL	Siemens AG	C65 Hera HIT Assembled B2.1 Layout TOP HIERARCHY LEVEL SCHEMATIC	72620	sheet2
8	18316	20.08.2004	rba	21.10.2003	USER					
7	18316	19.08.2004	rba		APPR'D					
6	17606	03.08.2004	olh							
5	16689	06.07.2004	rba							
4	14989	13.05.2004	olh							
3	14616	30.04.2004	olh							
2	14616	29.04.2004	olh							

( Created by BOM number: A5B00900149910-18316 )

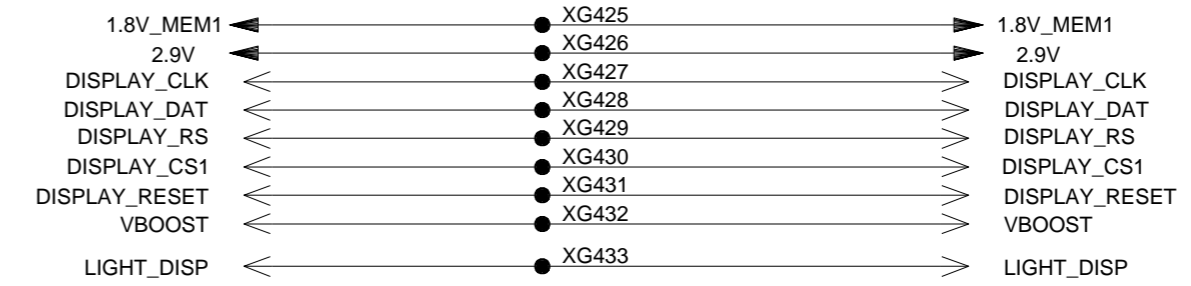
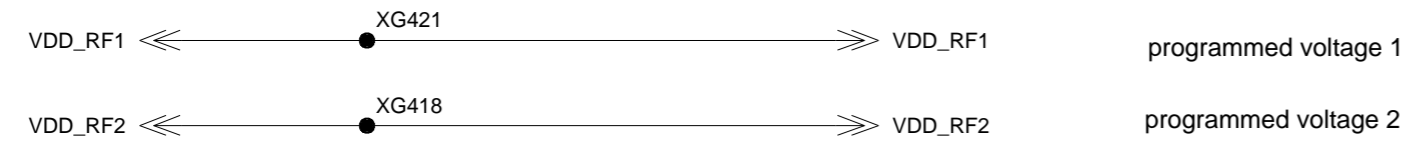
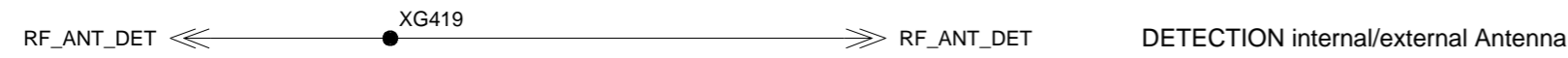
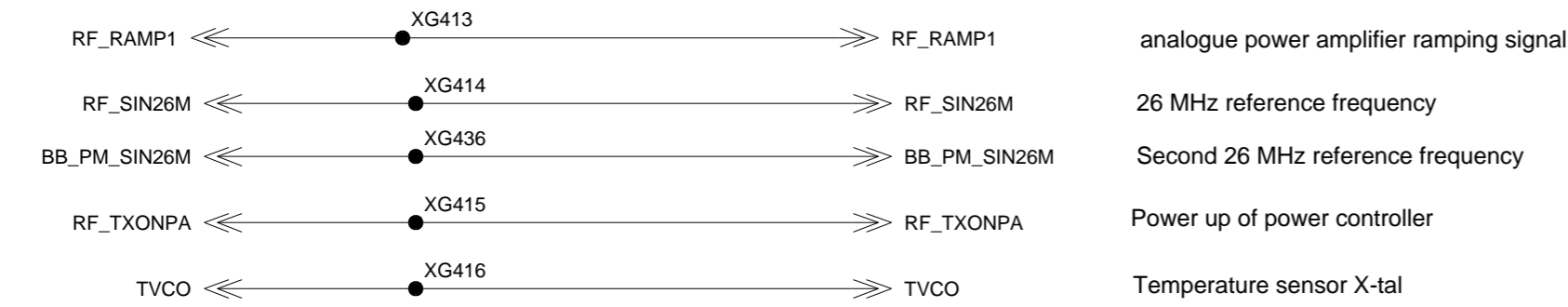
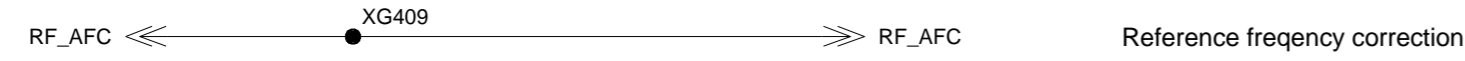
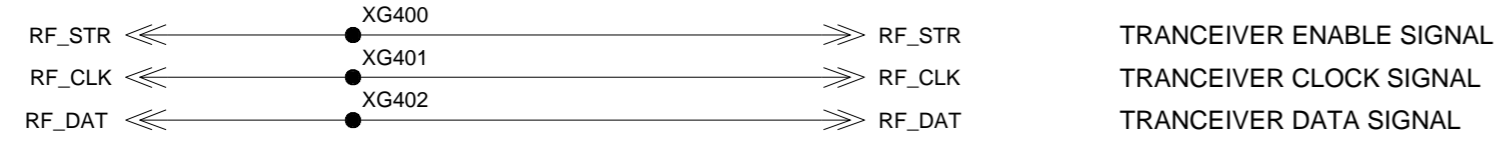


VERS.	CHANGE NUMBER	DATE	NAME	DATE	USER	MP UC RD LPD AAL	Siemens AG	C65 Hera HIT Assembled B2.1 Layout TOP HIERARCHY LEVEL SCHEMATIC	72620	sheet3
8	18316	20.08.2004	rba	21.10.2003	USER					
7	18316	19.08.2004	rba		APPRD					
6	17606	03.08.2004	olh							
5	16689	06.07.2004	rba							
4	14989	13.05.2004	olh							
3	14616	30.04.2004	olh							
2	14616	29.04.2004	olh							

( Created by BOM number: A5B00900149910-18316 )

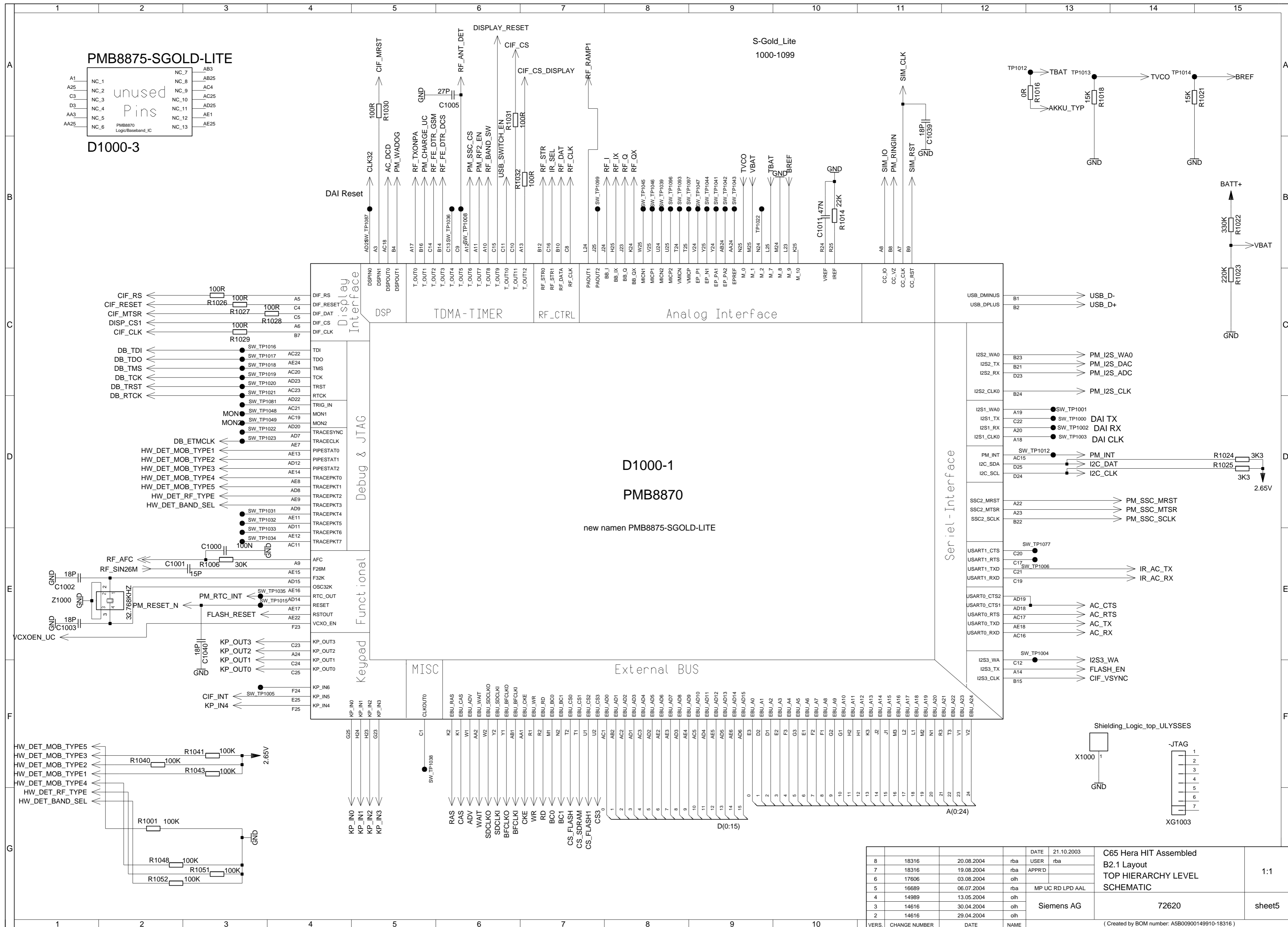
# HIT\_POINTS LOGIK/HF\_PART\_1

400-449



SAR-GND-PAD

VERS.	CHANGE NUMBER	DATE	NAME	DATE	USER	DATE	NAME	MP UC RD LPD AAL	Siemens AG	C65 Hera HIT Assembled B2.1 Layout TOP HIERARCHY LEVEL SCHEMATIC	72620	sheet4
8	18316	20.08.2004	rba	21.10.2003	rba							
7	18316	19.08.2004	rba		APPR'D							
6	17606	03.08.2004	olh									
5	16689	06.07.2004	rba									
4	14989	13.05.2004	olh									
3	14616	30.04.2004	olh									
2	14616	29.04.2004	olh									
										( Created by BOM number: A5B00900149910-18316 )		

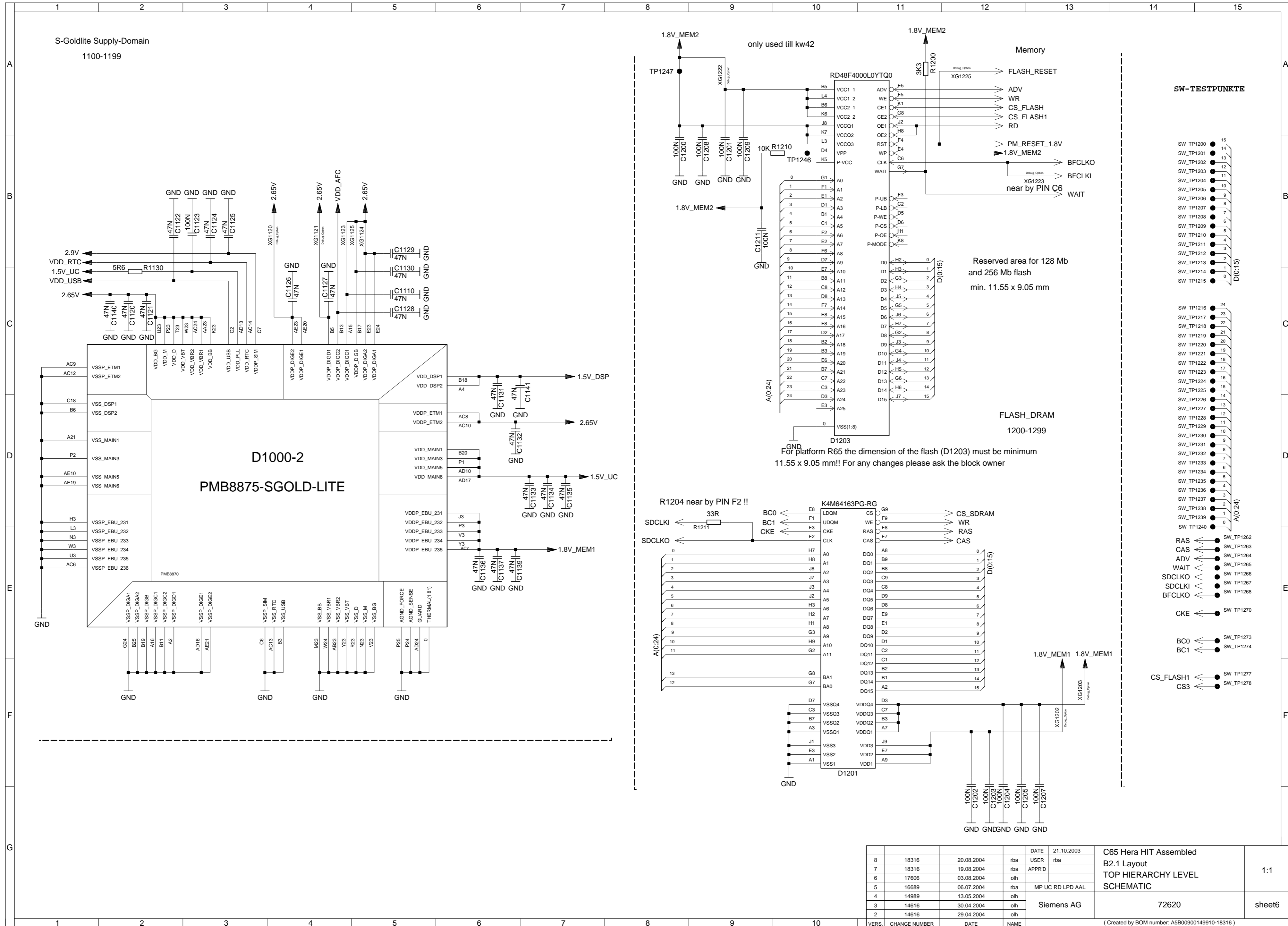


VERS.	CHANGE NUMBER	DATE	NAME	DATE	USER	DATE	NAME	DATE	NAME
8	18316	20.08.2004	rba	21.10.2003	rba				
7	18316	19.08.2004	rba		APPR'D				
6	17606	03.08.2004	ohl						
5	16689	06.07.2004	rba		MP UC RD LPD AAL				
4	14989	13.05.2004	ohl						
3	14616	30.04.2004	ohl						
2	14616	29.04.2004	ohl						

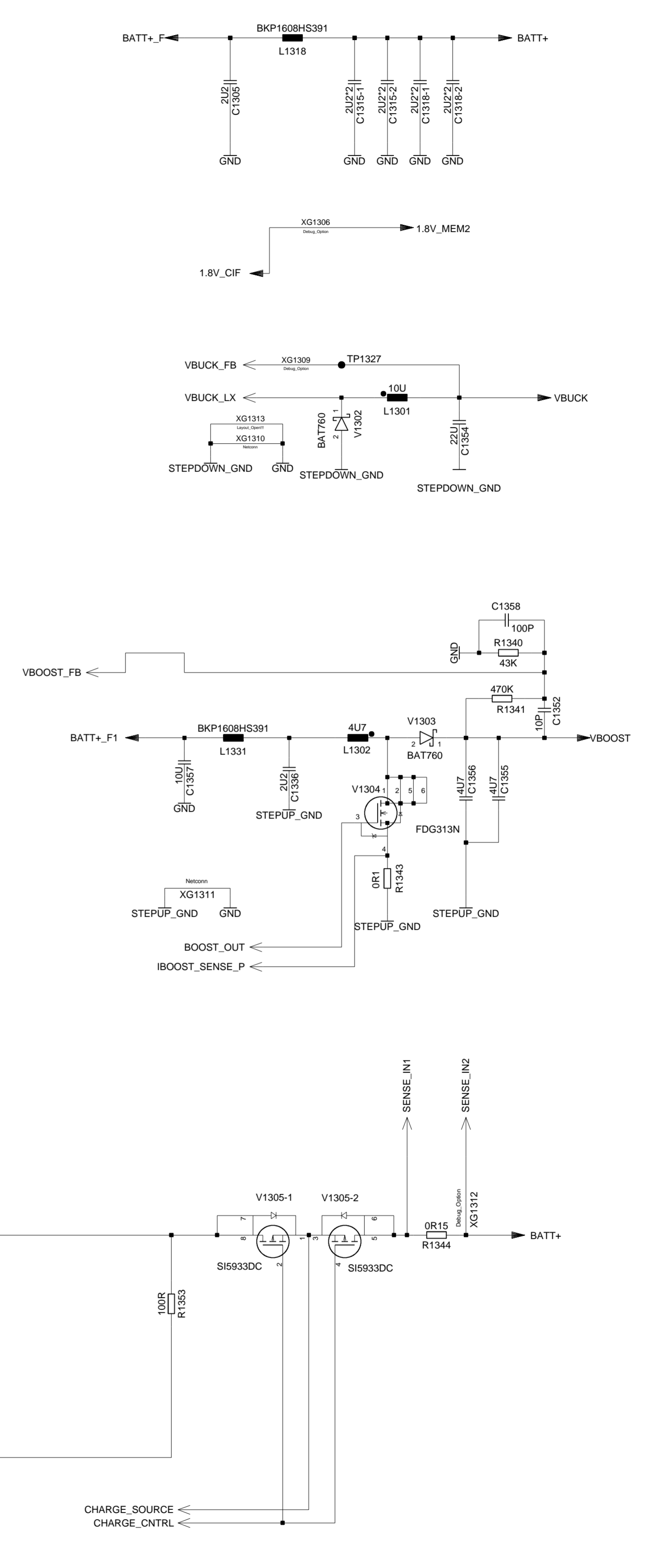
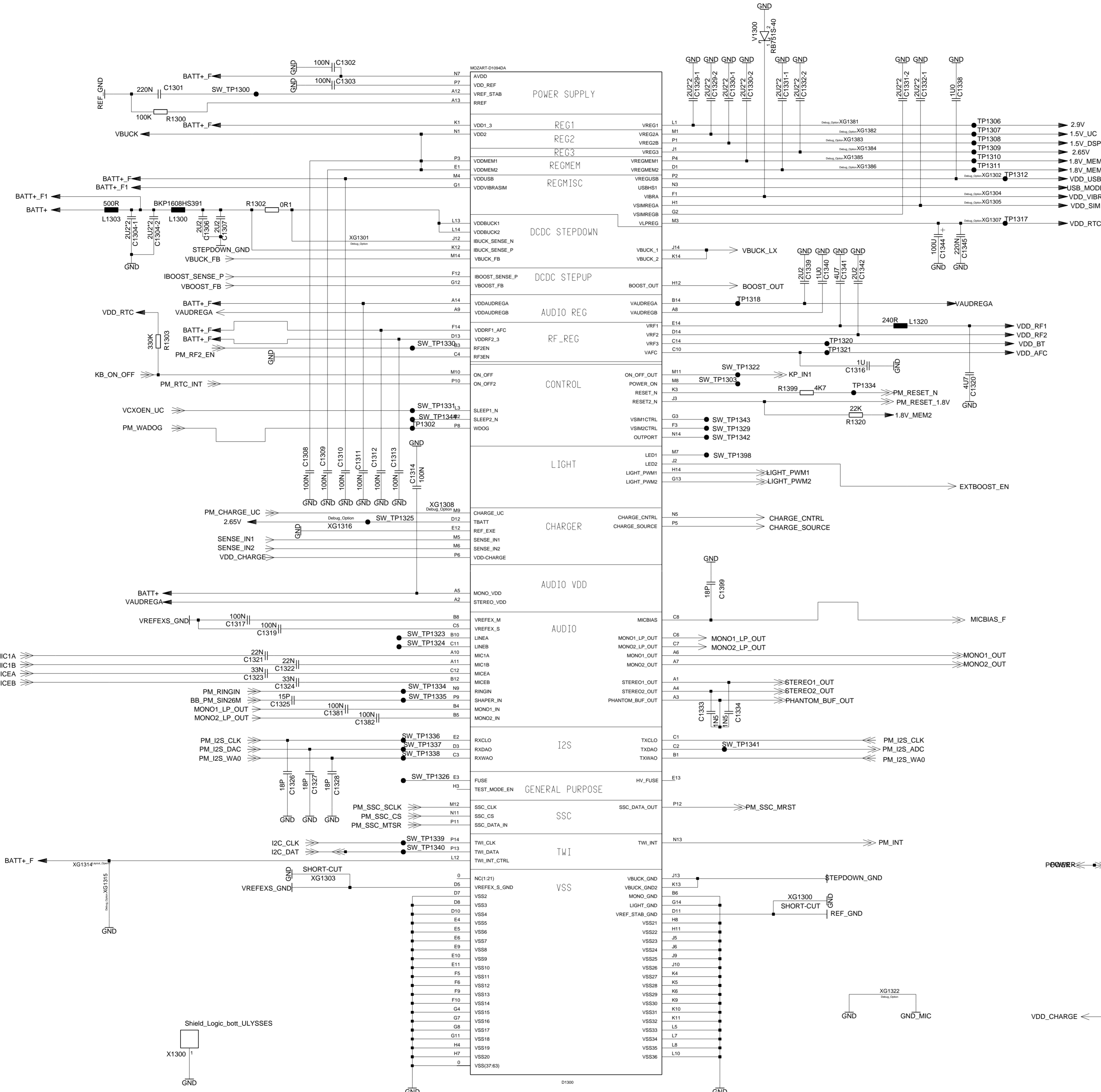
DATE	21.10.2003	C65 Hera HIT Assembled	
USER	rba	B2.1 Layout	
APPR'D		TOP HIERARCHY LEVEL	1:1
NAME		SCHEMATIC	
MP UC RD LPD AAL			
Siemens AG		72620	sheet5

( Created by BOM number: A5B00900149910-18316 )



VERS.	CHANGE NUMBER	DATE	NAME	DATE	21.10.2003	C65 Hera HIT Assembled	
8	18316	20.08.2004	rba	USER	rba	B2.1 Layout TOP HIERARCHY LEVEL SCHEMATIC	1:1
7	18316	19.08.2004	rba	APPRD			
6	17606	03.08.2004	ohl				
5	16689	06.07.2004	rba	MP UC RD LPD AAL			
4	14989	13.05.2004	ohl				
3	14616	30.04.2004	ohl				
2	14616	29.04.2004	ohl				
				Siemens AG		72620	sheet6
( Created by BOM number: A5B00900149910-18316 )							

Mozart  
1300-1399



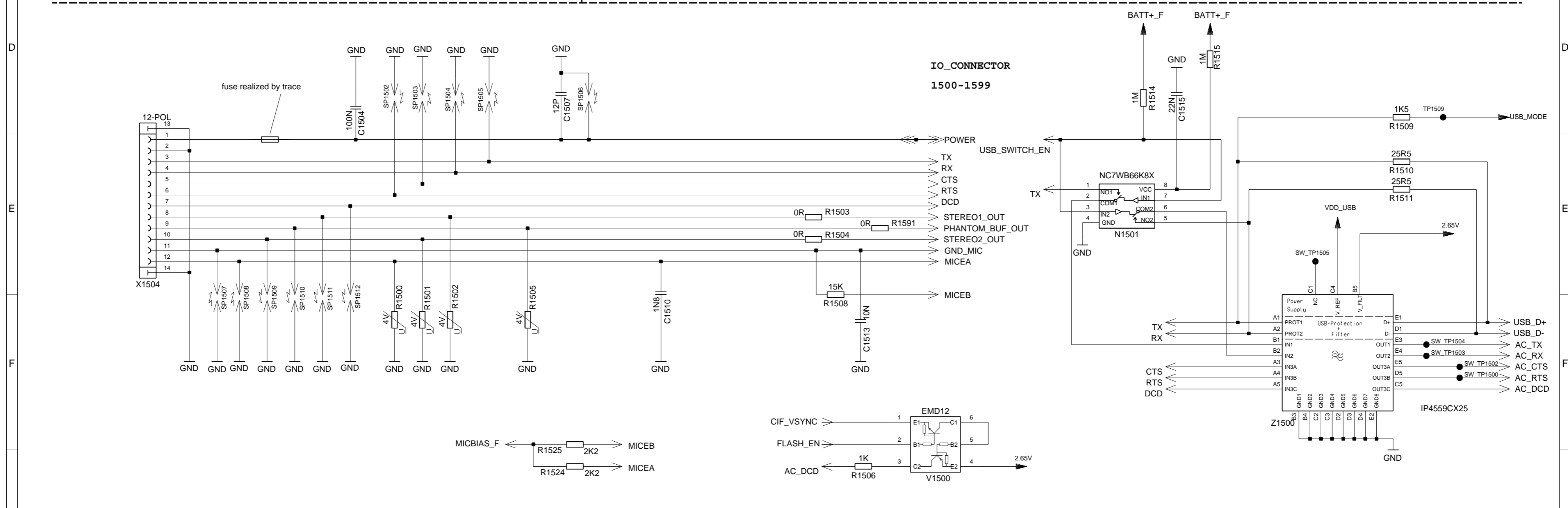
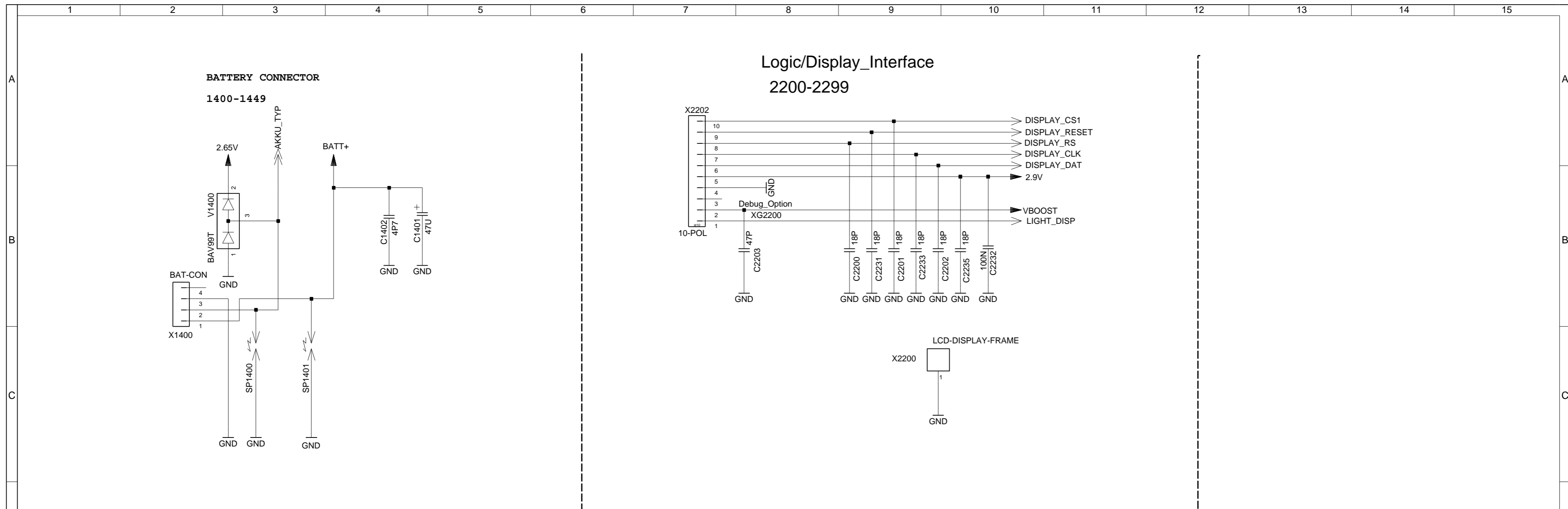
Sin nuestra expresa autorización, queda terminantemente prohibida la reproducción total o parcial de este documento, así como su uso indebido y/o su explotación o comunicación terceros. De los infractores se exigirá el correspondiente resarcimiento de daños y perjuicios. Se reserva todos los derechos para el caso de la concesión de patentes de invención o el registro de Modelos Industriales.

Copying of this document, and giving to others and the use or communication of the contents thereof, are forbidden without express authority. Offenders are liable to the payment of damages. All rights are reserved in the event of the grant of a Patent or the registration of a Utility Model or Design.

Wiedergabe sowie Weiterverbreitung dieses Urtextes, Verwertung und Mitteilung ihres Inhalts nicht gestattet, soweit nicht ausdrücklich zugestimmt. Zuwiderhandlungen Verursachen zu Schadensersatz. Alle Rechte für den Fall der Patentierung oder GM-Eintragung vorbehalten.

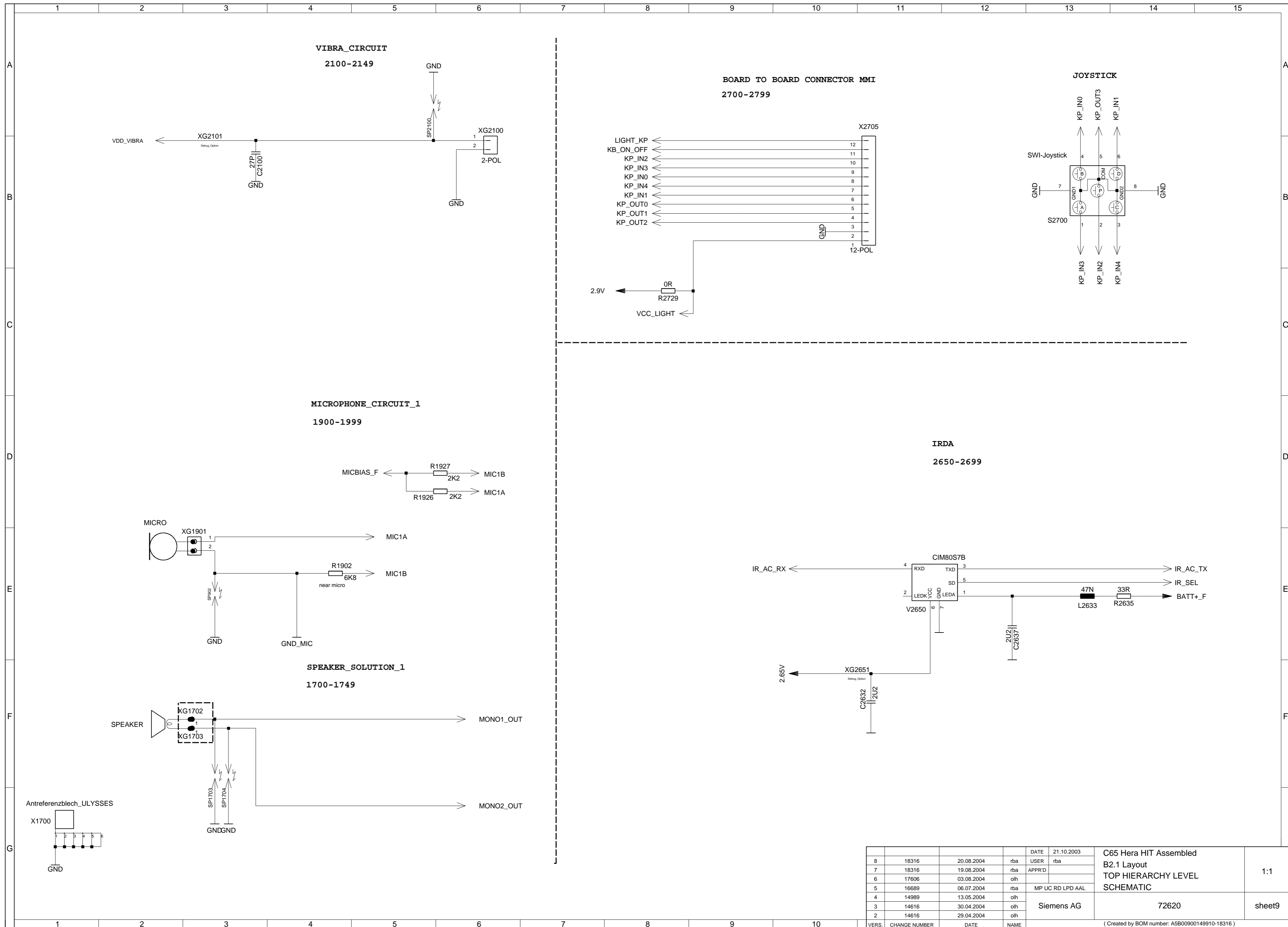
VERS.	CHANGE NUMBER	DATE	NAME	DATE	USER	APPROV
8	18318	20.06.2004	iba	21.10.2003	iba	
7	18316	19.08.2004	iba			
6	17606	03.08.2004	oh			
5	16689	06.07.2004	iba			
4	14989	13.05.2004	oh			
3	14616	30.04.2004	oh			
2	14616	29.04.2004	oh			



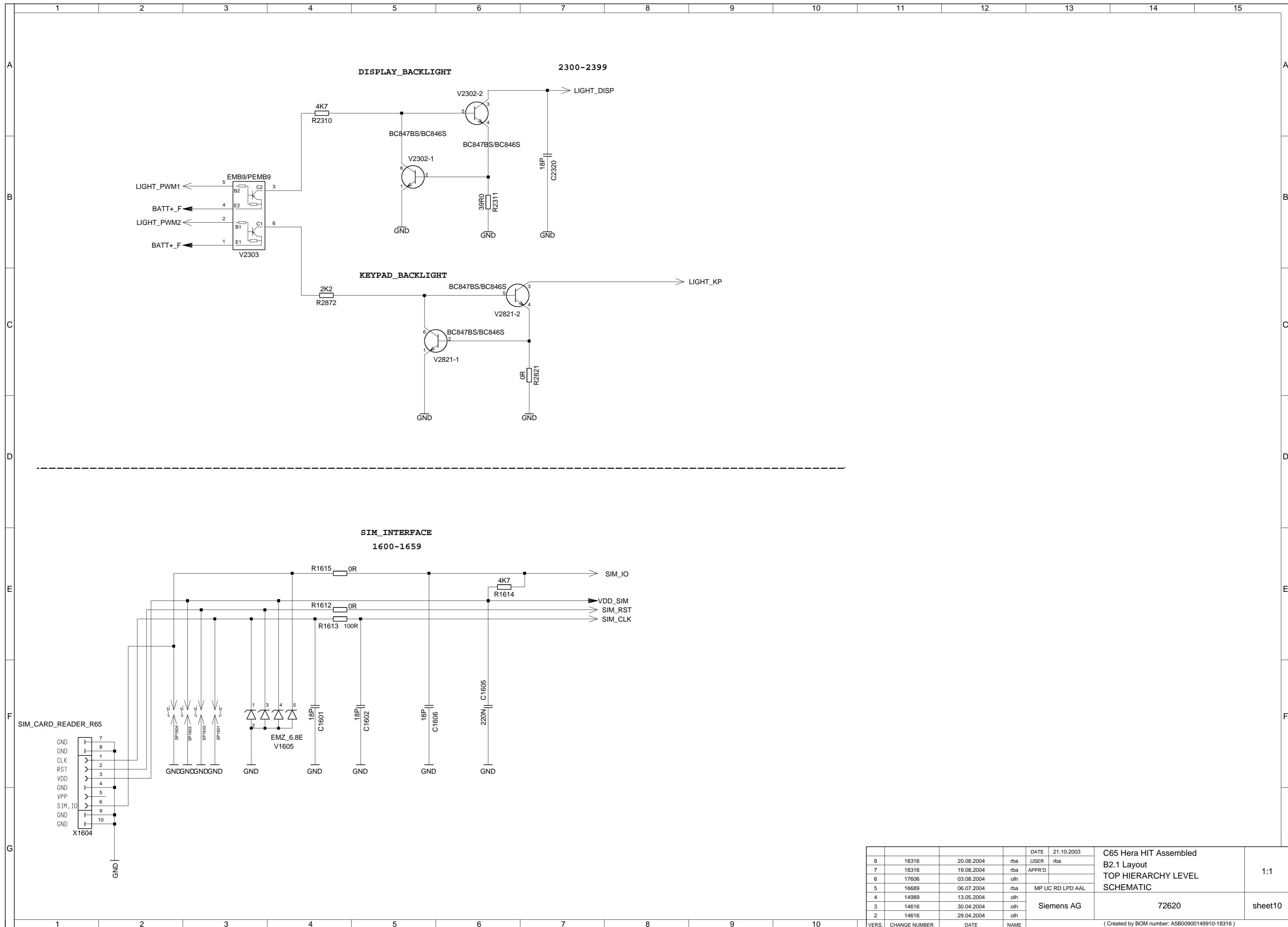


VERS.	CHANGE NUMBER	DATE	NAME	DATE	USER	MP UC RD LPD AAL	Siemens AG	C65 Hera HIT Assembled B2.1 Layout TOP HIERARCHY LEVEL SCHEMATIC	72620	sheet8
8	18316	20.08.2004	rba	21.10.2003	USER					
7	18316	19.08.2004	rba		APPR'D					
6	17606	03.08.2004	ohl							
5	16689	06.07.2004	rba							
4	14989	13.05.2004	ohl							
3	14616	30.04.2004	ohl							
2	14616	29.04.2004	ohl							

( Created by BOM number: A5B00900149910-18316 )



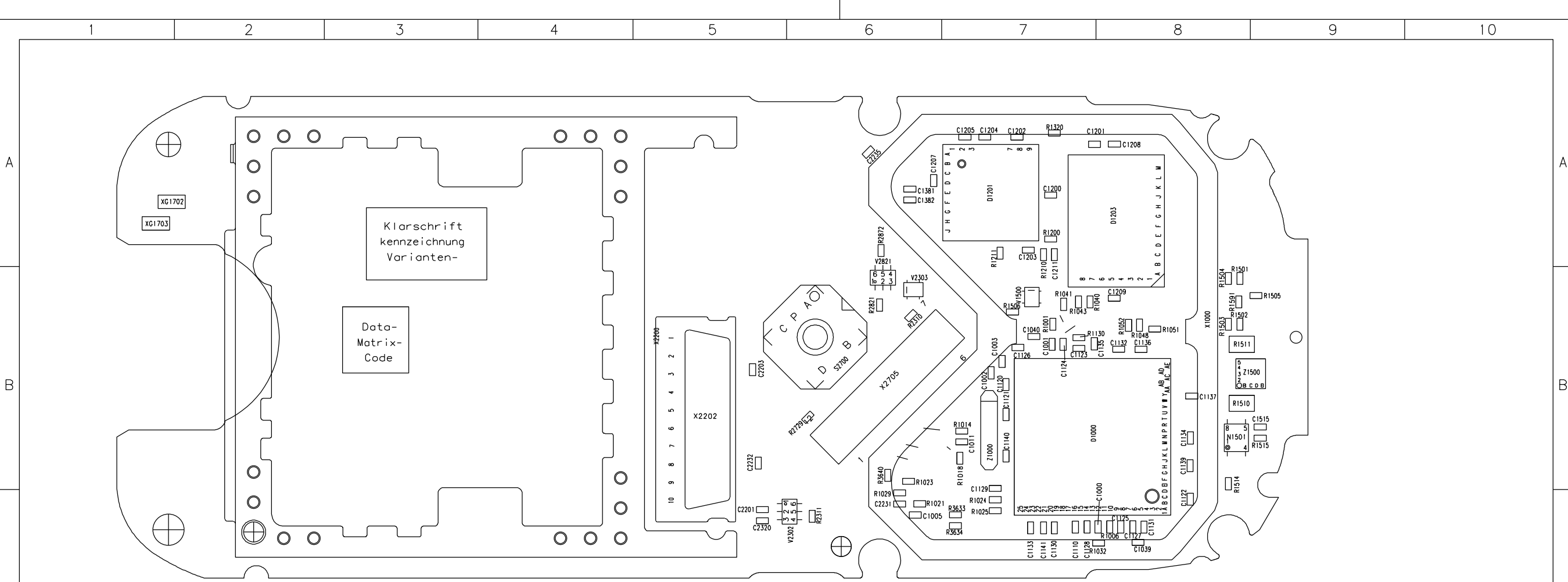
VERS.	CHANGE NUMBER	DATE	NAME	DATE	USER	NAME	DESCRIPTION
8	18316	20.08.2004	rba	21.10.2003	USER	rba	C65 Hera HIT Assembled
7	18316	19.08.2004	rba		APPR'D		B2.1 Layout
6	17606	03.08.2004	olh				TOP HIERARCHY LEVEL
5	16689	06.07.2004	rba			MP UC RD LPD AAL	SCHEMATIC
4	14989	13.05.2004	olh				
3	14616	30.04.2004	olh				
2	14616	29.04.2004	olh				
				Siemens AG		72620	
						sheet9	
( Created by BOM number: A5B00900149910-18316 )							



VERS.	CHANGE NUMBER	DATE	NAME	DATE	USER	DATE	NAME	DATE	NAME
8	18316	20.08.2004	rba	21.10.2003	USER	rba			
7	18316	19.08.2004	rba		APPR'D				
6	17606	03.08.2004	olh						
5	16689	06.07.2004	rba			MP UC RD LPD AAL			
4	14989	13.05.2004	olh						
3	14616	30.04.2004	olh						
2	14616	29.04.2004	olh						
				Siemens AG		72620		sheet10	
( Created by BOM number: A5B00900149910-18316 )									

C65 Hera HIT Assembled  
B2.1 Layout  
TOP HIERARCHY LEVEL  
SCHEMATIC

1:1



C1000	8C	C2231	6C	R3633	7C
C1001	7B	C2232	5B	R3634	7C
C1002	7B	C2235	6A	R3640	6B
C1003	7B	C2320	5C	S2700	6B
C1005	6C	D1000	8C	V1500	7B
C1011	7B	D1201	7A	V2302	5C
C1039	8C	D1203	8B	V2303	6B
C1040	7B	N1501	8B	V2821	6B
C1110	7C	R1001	7B	X1000	8C
C1120	7B	R1006	8C	X2200	2B
C1121	7B	R1014	7B	X2202	5B
C1122	8C	R1018	7B	X2705	6B
C1123	7B	R1021	6C	Z1000	7B
C1124	7B	R1023	6B	Z1500	8B
C1125	8C	R1024	7C		
C1126	7B	R1025	7C		
C1127	8C	R1029	6C		
C1128	7C	R1032	8C		
C1129	7B	R1040	7B		
C1130	7C	R1041	7B		
C1131	8C	R1043	7B		
C1132	8B	R1048	8B		
C1133	7C	R1051	8B		
C1134	8B	R1052	8B		
C1135	7B	R1130	7B		
C1136	8B	R1200	7A		
C1137	8B	R1210	7A		
C1139	8B	R1211	7A		
C1140	7B	R1320	7A		
C1141	7C	R1501	8B		
C1200	7A	R1502	8B		
C1201	7A	R1503	8B		
C1202	7A	R1504	8B		
C1203	7A	R1505	9B		
C1204	7A	R1506	7B		
C1205	7A	R1510	8B		
C1207	6A	R1511	9B		
C1208	8A	R1514	8B		
C1209	8B	R1515	9B		
C1211	7A	R1591	8B		
C1381	6A	R2310	6B		
C1382	6A	R2311	6C		
C1515	9B	R2729	6B		
C2201	5C	R2821	6B		
C2203	5B	R2872	6A		

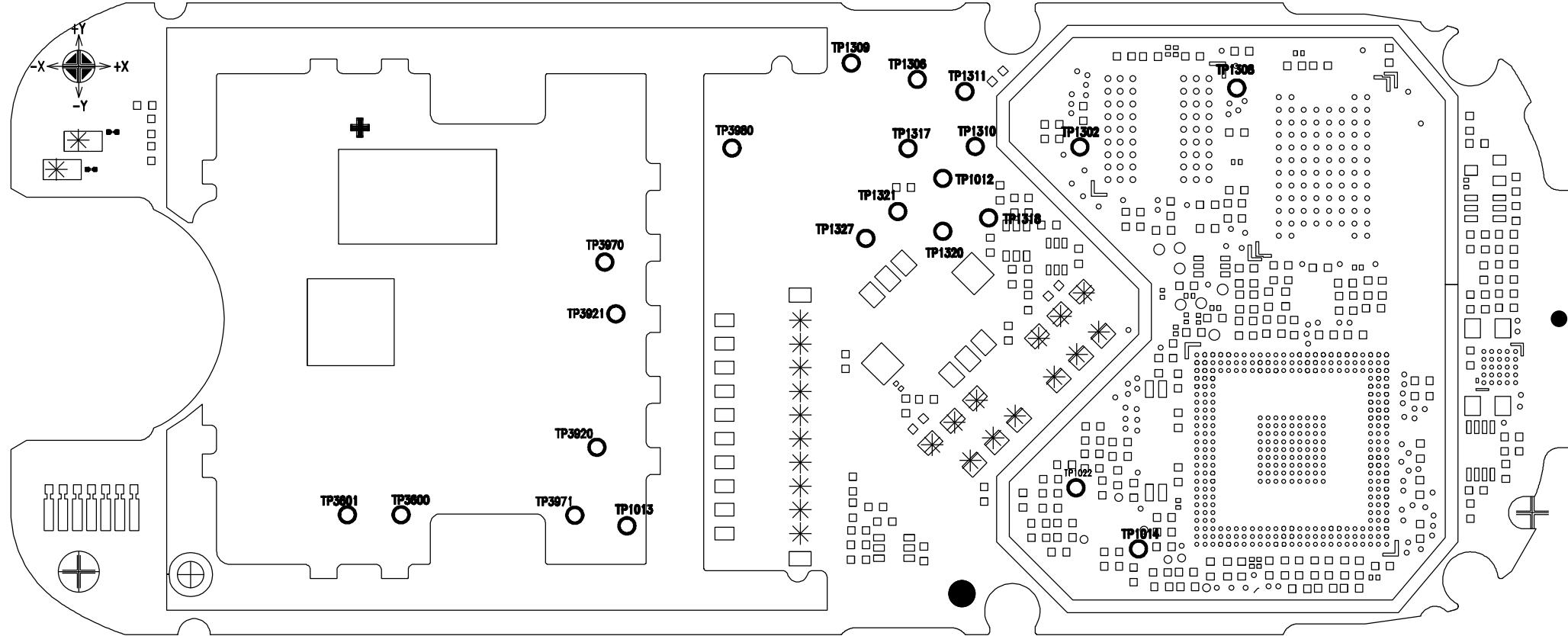
Achtung : Hoehenprofil C24\_ \_ \_ \_ \_42 (gilt nur fuer Entwicklung)  
Liefervarianten siehe : V24851-Z2000-A1-\*35

7	18316	20.08.2004	rba	DATE	21.10.2003	C65 Hera HIT Assembled B2.1 Layout WIRING DIAGRAMM (SOLDER SIDE 1)	3:1
6	18316	19.08.2004	rba	NAME	rba		
5	17606	03.08.2004	o h	APPR'D			
4	16689	06.07.2004	rba	STD		MP UC RD LPD AAL	SHEET 1+
3	14616	30.04.2004	o h				
2	14616	29.04.2004	o h			SIEMENS AG	72621
1	14345	21.04.2004	o h				
VERS.	CHANGE NUMBER	DATE	NAME	( Created by BOM number: A5B00900149910-18316 )			



PROPRIETARY DATA, COMPANY CONFIDENTIAL  
ALL RIGHTS RESERVED

ALS BETRIEBSGEHEIMNIS ANVERTRAUT  
ALLE RECHTE VORBEHALTEN

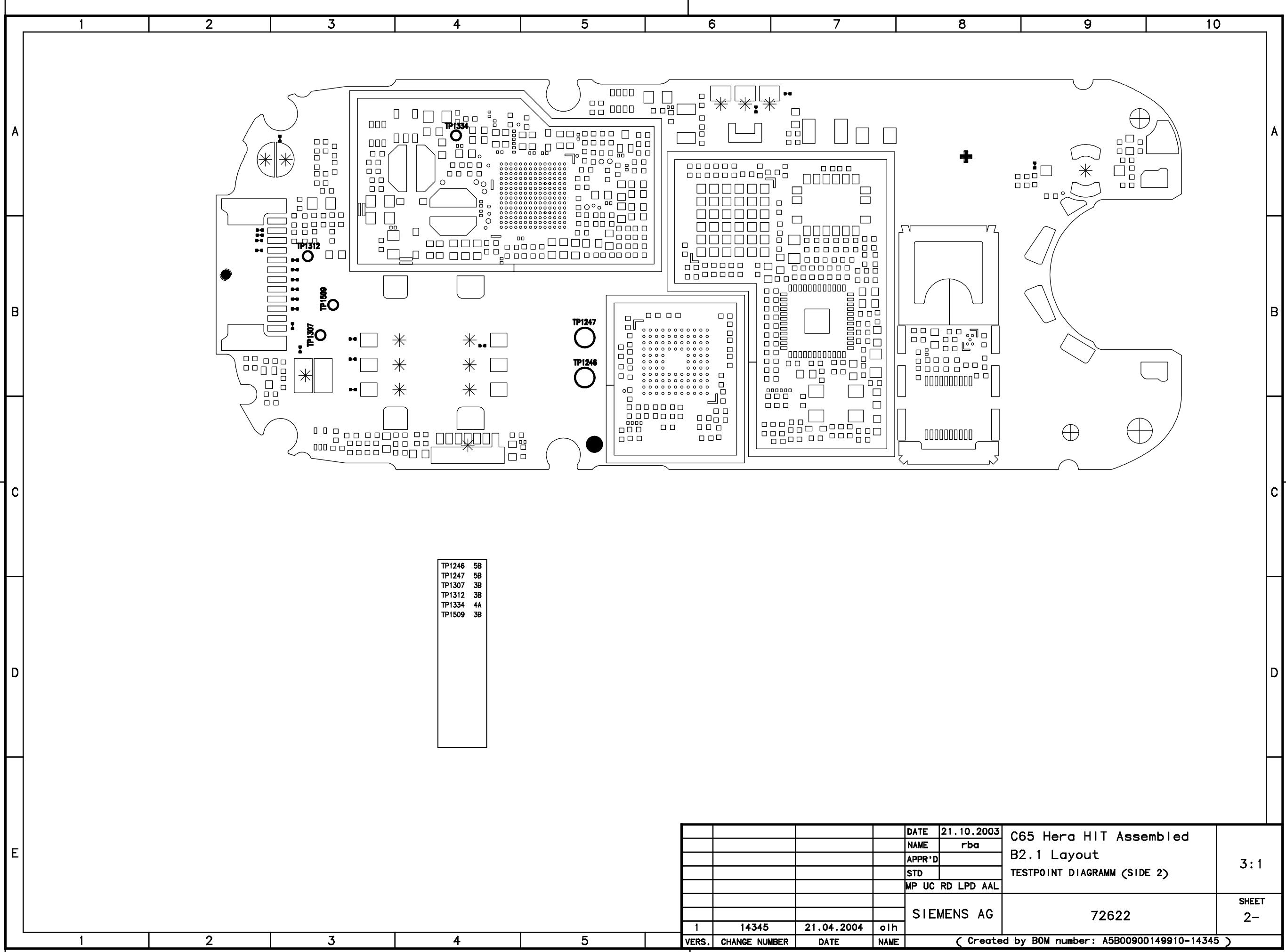


TP1012	7A	TP3980	6A
TP1013	5C		
TP1014	8C		
TP1022	7B		
TP1302	7A		
TP1306	7A		
TP1308	8A		
TP1309	6A		
TP1310	7A		
TP1311	7A		
TP1317	7A		
TP1318	7B		
TP1320	7B		
TP1321	7A		
TP1327	6B		
TP3600	4C		
TP3601	4C		
TP3920	5B		
TP3921	5B		
TP3970	5B		
TP3971	5C		

				DATE	21.10.2003	C65 Hera HIT Assembled B2.1 Layout TESTPOINT DIAGRAMM (SIDE 1)	3:1
				NAME	rba		
				APPR'D			
				STD			
					MP UC RD LPD AAL		
					SIEMENS AG	72622	SHEET 1+
1	14345	21.04.2004	o/h	( Created by BOM number: A5B00900149910-14345 )			
VERS.	CHANGE NUMBER	DATE	NAME				

PROPRIETARY DATA, COMPANY CONFIDENTIAL  
ALL RIGHTS RESERVED

ALS BETRIEBSGEHEIMNIS ANVERTRAUT  
ALLE RECHTE VORBEHALTEN



TP1246	5B
TP1247	5B
TP1307	3B
TP1312	3B
TP1334	4A
TP1509	3B

			DATE	21.10.2003	C65 Hera HIT Assembled B2.1 Layout TESTPOINT DIAGRAMM (SIDE 2)	3:1
			NAME	rba		
			APPR'D			
			STD			
			MP UC RD LPD AAL			
			SIEMENS AG			72622
1	14345	21.04.2004	o/h			SHEET 2-
VERS.	CHANGE NUMBER	DATE	NAME	( Created by BOM number: A5B00900149910-14345 )		