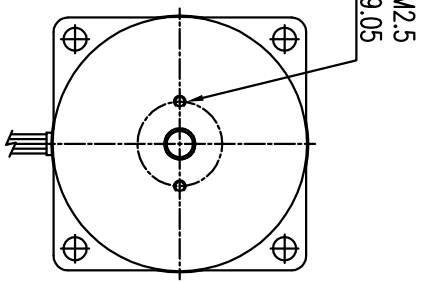
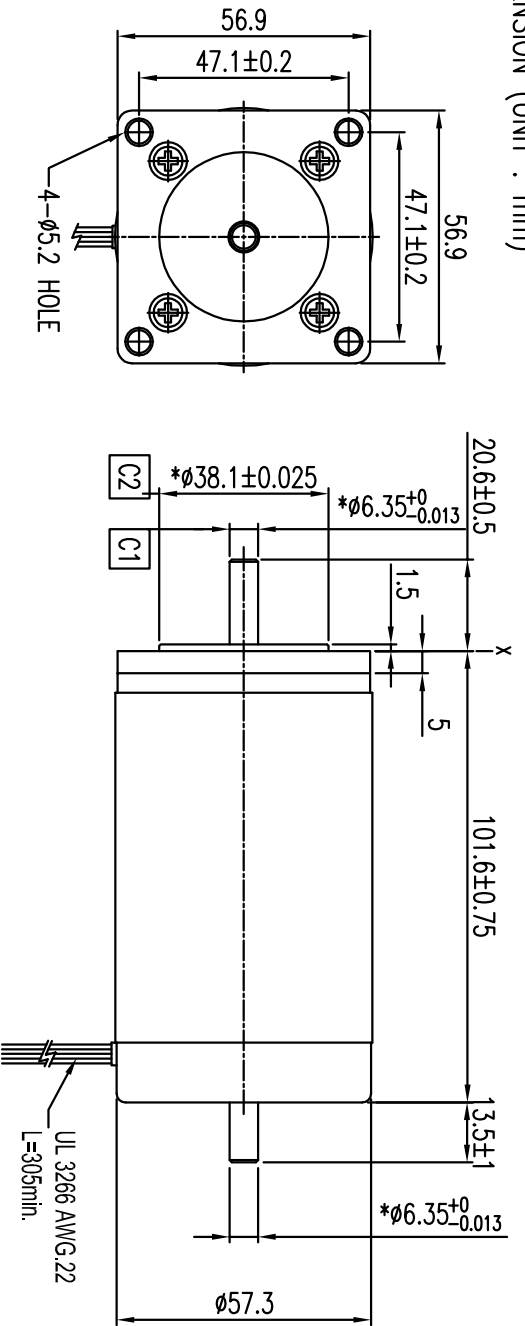


DIMENSION (UNIT : mm)



TYPE:DB57C01

PERFORMANCE DATA			
PARAMETER	SYMBOL	UNITS	VALUE TOL
RATED VOLTAGE	V	VOLTS	24 NOM.
NO LOAD SPEED	$S_{NL}$	RPM	3600 ±10%
CONTINUOUS TORQUE	$T_c$	Kg-cm	3.77 NOM.
CONTINUOUS SPEED	$S_c$	RPM	2800 ±10%
CONTINUOUS CURRENT	$I_c$	AMP	6.5 ±10%
CONTINUOUS POWER	$P_{out}$	W	110 NOM.
PEAK TORQUE	$T_p$	Kg-cm	13.66 MIN.
PEAK CURRENT	$I_p$	AMP	25.3 MAX.
VOLTAGE CONSTANT	$K_e$	V/rad/sec	0.063 ±10%
RESISTANCE	R	OHM	0.42 ±10%
INERTIA	$J_M$	g-cm <sup>2</sup>	500 ±10%
WEIGHT	W	Kg	1.5 MAX.
AMBIENT TEMPERATURE	T	°C	-10~+60 TYP.

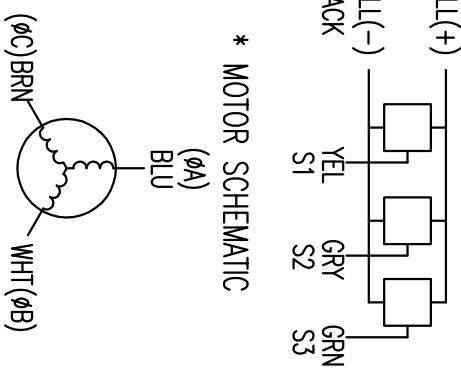
NOTES:

- C1 DIAMETER RUNOUT TO BE 0.05 mm MAX.
- C2 CONCENTRIC TO C1 W/IN 0.08 mm TIR.
- X SURFACE PERPENDICULAR TO C1 W/IN 0.08 mm.
- HALL EFFECT SENSORS REQUIRE AN INPUT VOLTAGE OF 4.5 VDC (MIN) TO 24 VDC (MAX). CURRENT DRAWN BY HALL EFFECT SENSORS TO BE ≤ 8 mA EACH.
- \* MEANS IMPORTANT ITEM.

ROTATION: CCW FACING LEAD END

SENSOR OUTPUT			DRIVER OUTPUT		
S1	S2	S3	ΦA	ΦB	ΦC
0	0	1	X	HI	LOW
0	1	1	HI	X	LOW
0	1	0	HI	LOW	X
1	1	0	X	LOW	HI
1	0	0	LOW	X	HI
1	0	1	LOW	HI	X

\* MOTOR SCHEMATIC



\* HALL SWITCHES

REV	DESCRIPTION	DATE	APVD	Nanotec		SCALE FREE	APVD	BRUSHLESS DC MOTOR	
						X ±0.5	CHKD	DWG:NO	
						1PL ±0.2	DRN	DB5701_Z01	
						2PL ±0.1	SIGNATURE		
						ANGLE ±30°	DATE		

BRUSHLESS DC MOTOR

DWG:NO DB5701\_Z01