

---

## 11 Disassembly and Reassembly

---

This section of the service manual describes the disassembly and reassembly procedures for the TFT-LCD monitors.

**⚠ WARNING:** This monitor contains electrostatically sensitive devices. Use caution when handling these components.

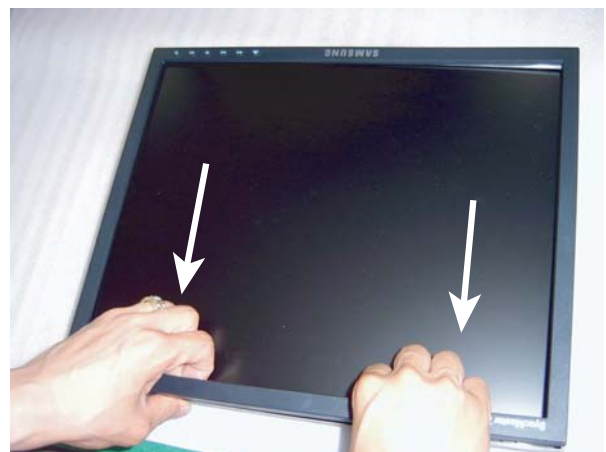
### 11-1 Disassembly (Simple - Stand)

---

**⚠ Cautions:** 1. Disconnect the monitor from the power source before disassembly.



1. Place monitor face down on cushioned table. Remove 3 screws from the stand.

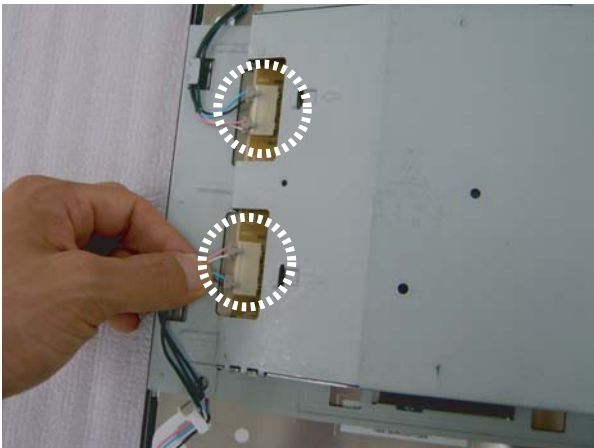


2. Remove stand and front cover.

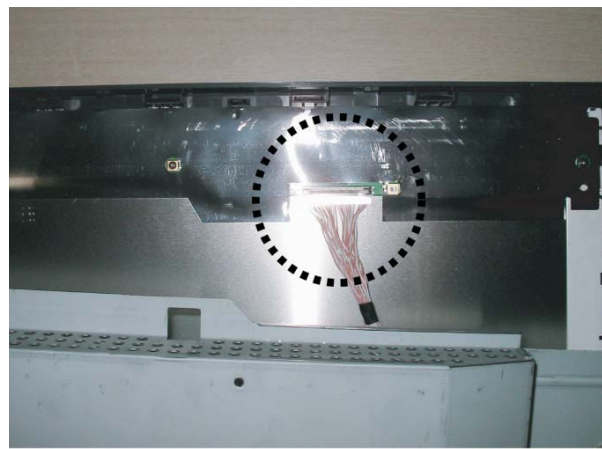
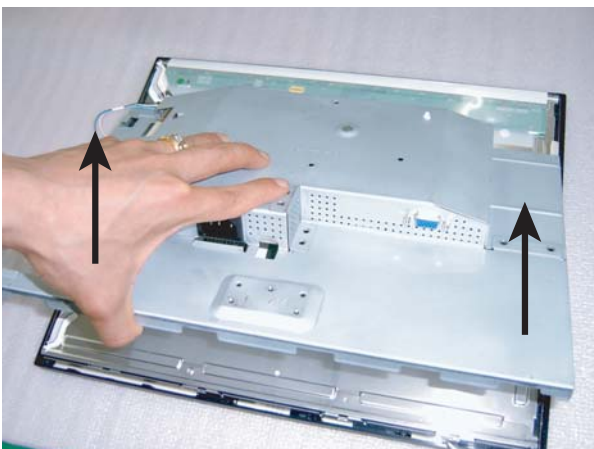
## 11 Disassembly and Reassembly



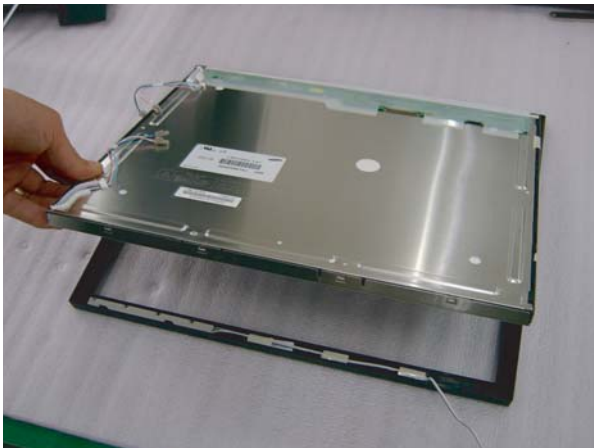
3. Lift up the back cover and Use the jig to remove the shield lamp.



4. Disconnect cables.



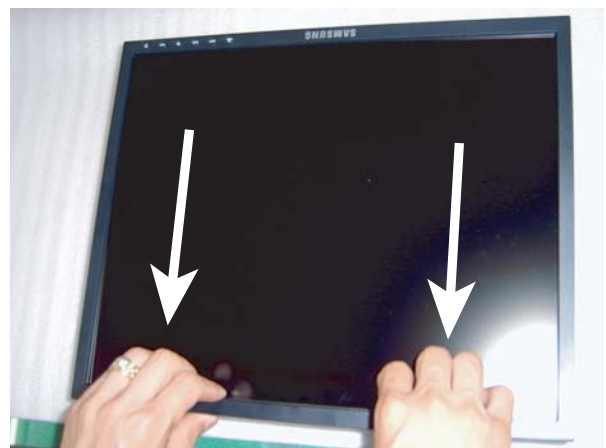
5. Lift up the shield and disconnect LVDS cable.



6. Lift up the LCD panel.

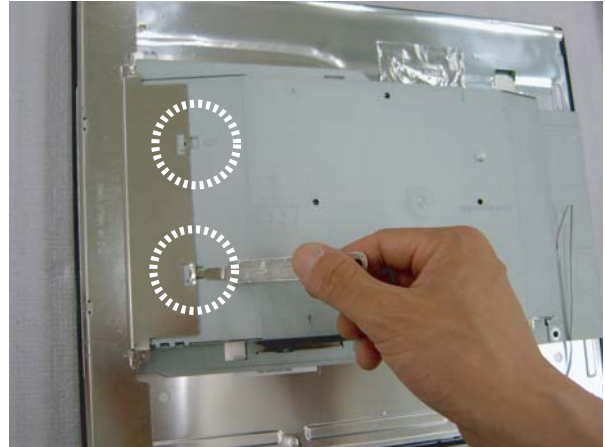
## 11-2 Disassembly (HAS-Stand)

---

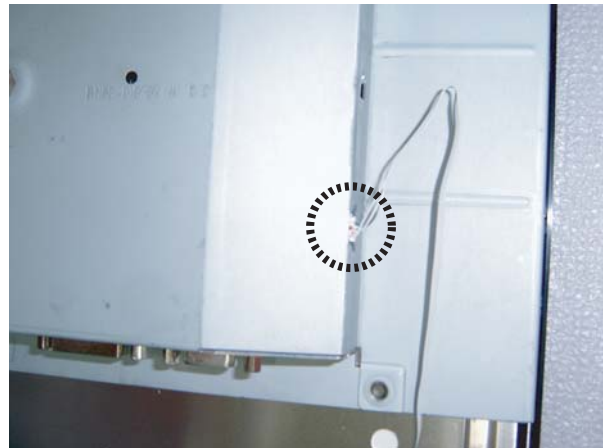
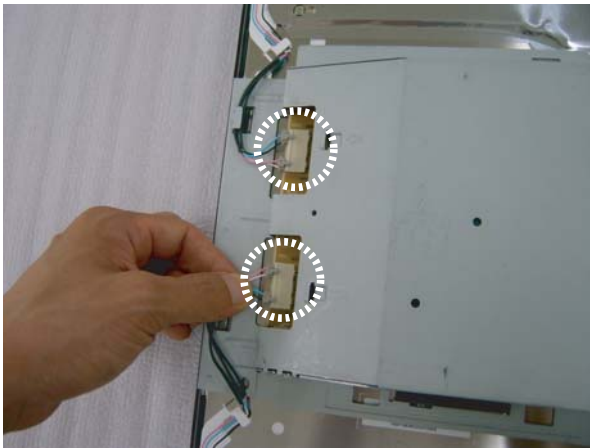


1. Place monitor face down on cushioned table. Remove 2 screws from the stand and remove front cover.

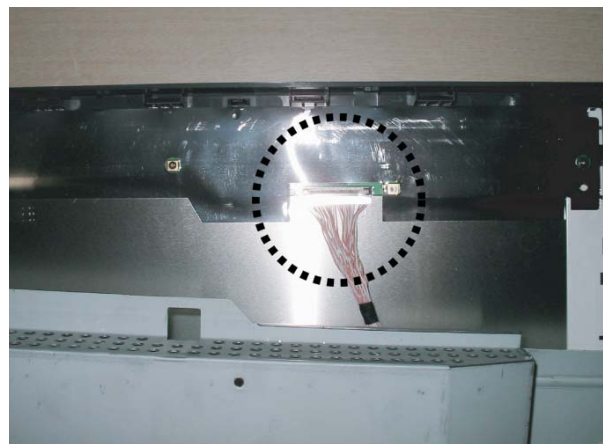
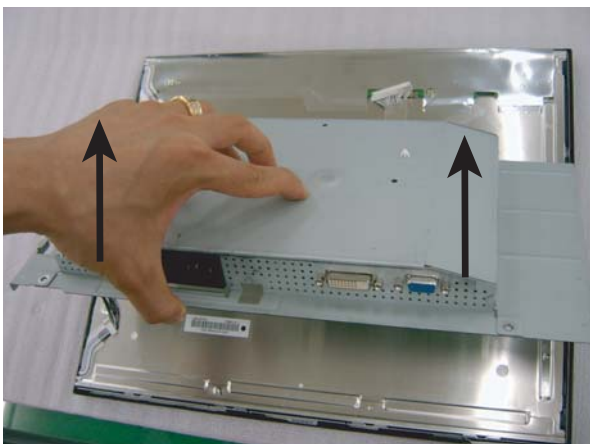
## 11 Disassembly and Reassembly



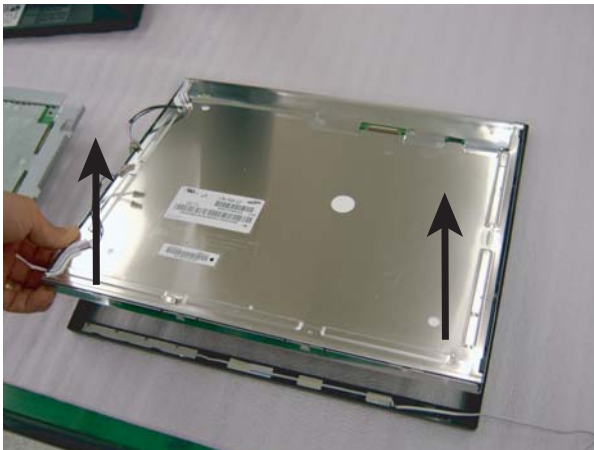
2. Lift up the back cover and Use the jig to remove the shield lamp.



3. Disconnect cables.



4. Lift up the shield and disconnect LVDS cable.



5. Lift up the LCD panel.



### 11-3 Reassembly

---

Reassembly procedures are in the reverse order of disassembly procedures.

## Memo