

Release status (DRAFT/EXAMPLE/REFERENCE):

EXAMPLE

This design is copyright (c) CSR PLC. Unauthorised reproduction is prohibited

LIMITATION OF LIABILITY

The performance of this design has not been verified completely by CSR. It may contain errors or omissions for which CSR shall not be held liable. You should verify operation of the circuit UNDER ALL USAGE CONDITIONS prior to production. Please check with CSR for updates.

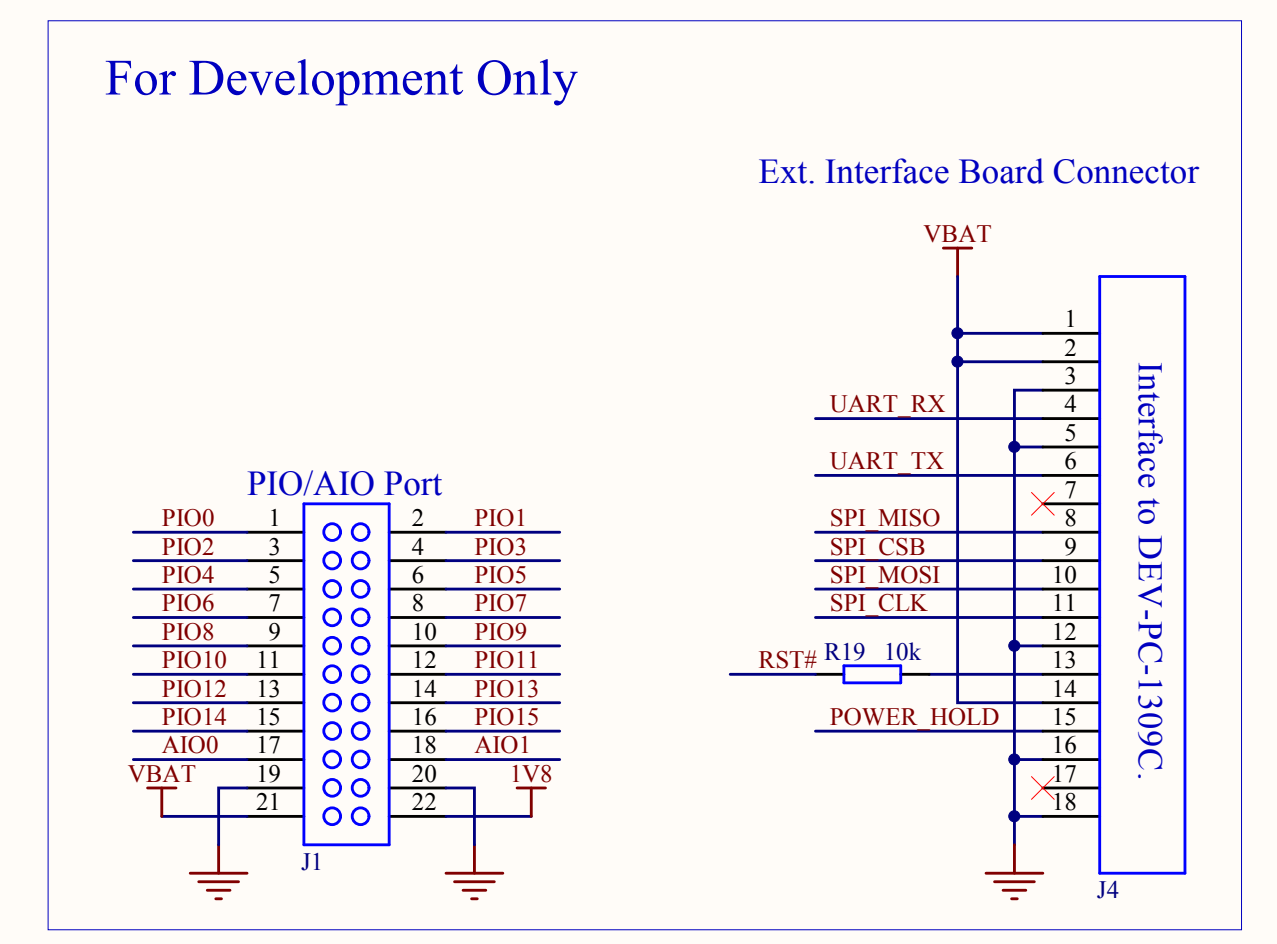
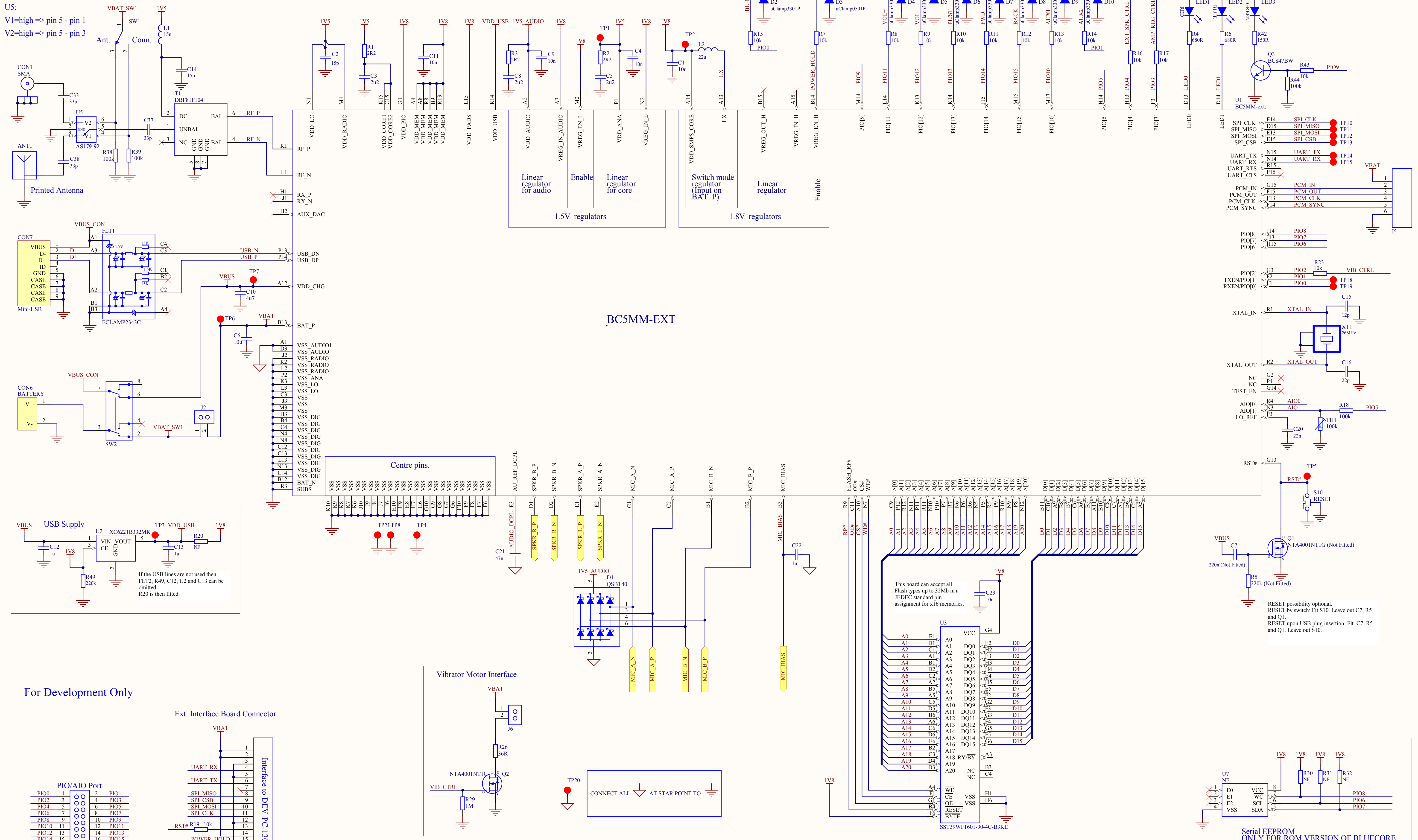


Cambridge Silicon Radio PLC
Churchill House, Cambridge Business Park,
Cowley Road, Cambridge,
CB4 0WZ, United Kingdom.
<http://www.csr.com>
+44 (0) 1223 692000

Title:		BlueTunes2 BC5MM Audio Example Design and Dev. Kit	
Drawn By:	Refer. and Example Design Group	Revision: C	Document Number: DEV-PC-1645
Date:	07-06-2007 14:52:58	Sheet 1 of 3	
File:	DEV-CD-1645C.SchDoc		

DISCLAIMER:
 To accelerate the product development process, CSR are offering early access to this preliminary design. This advance design information has not been through CSR's internal qualification sign-off procedure. CSR has yet to complete its testing of this design and offers no guarantee with respect to the performance. The design may change without notice.

U5:
 V1=high => pin 5 - pin 1
 V2=high => pin 5 - pin 3

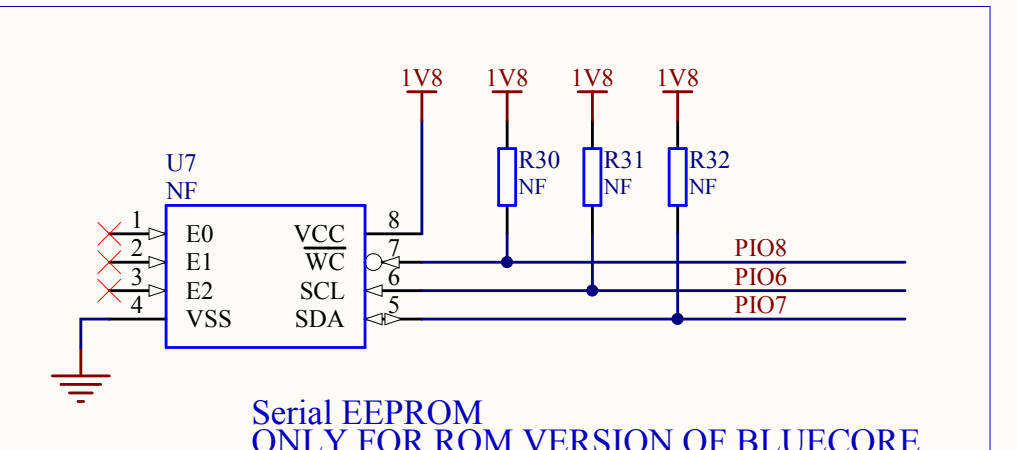


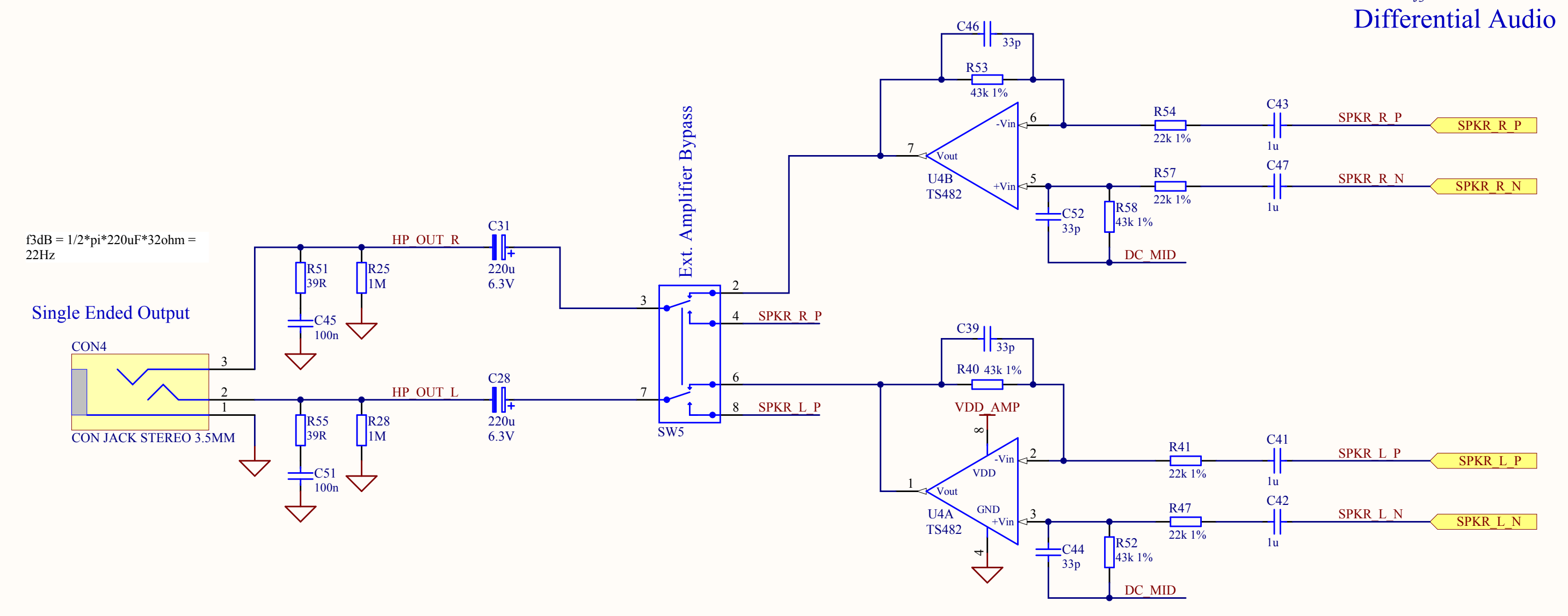
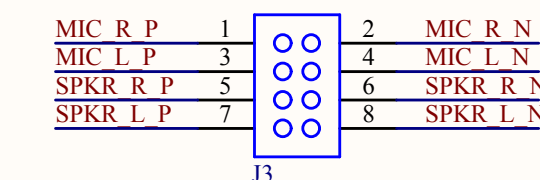
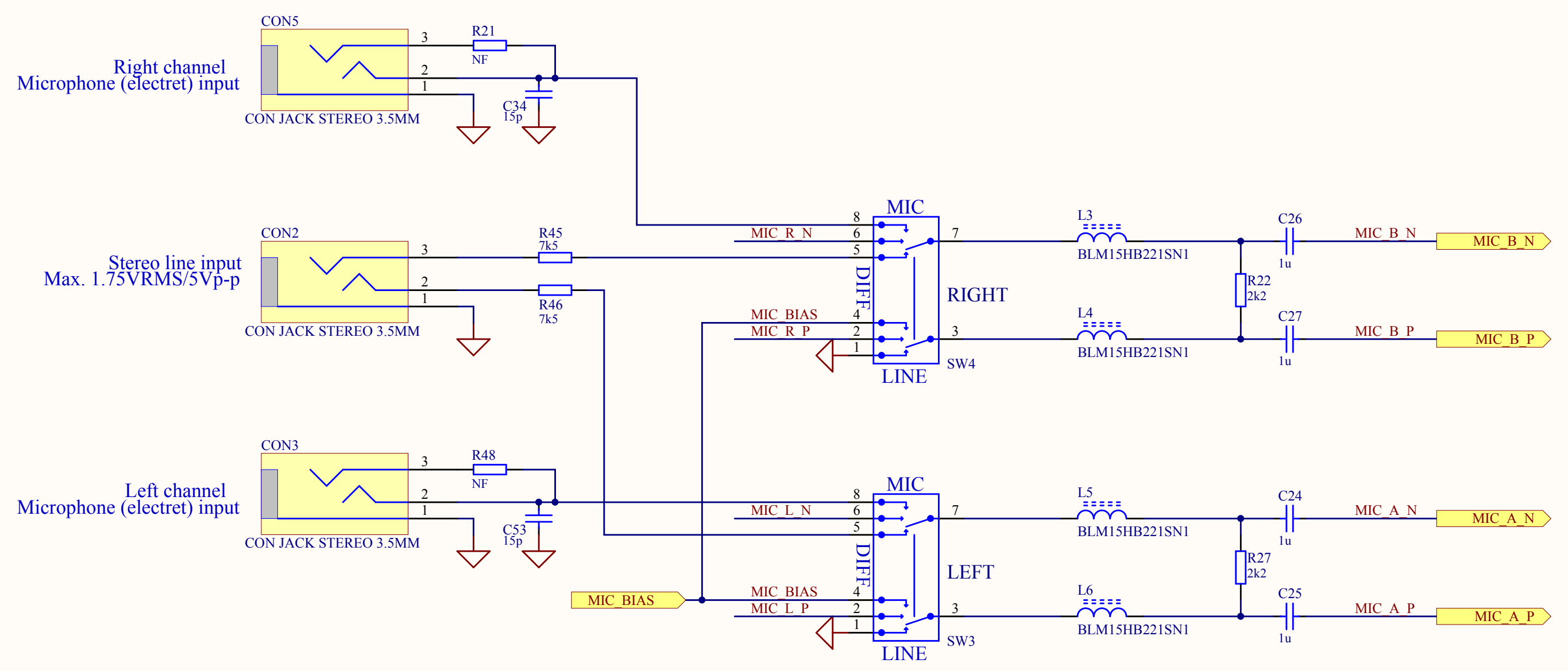
Release status (DRAFT/EXAMPLE/REFERENCE):
EXAMPLE
 This design is copyright (c) CSR PLC. Unauthorised reproduction is prohibited

LIMITATION OF LIABILITY
 The performance of this design has not been verified completely by CSR. It may contain errors or omissions for which CSR shall not be held liable. You should verify operation of the circuit UNDER ALL USAGE CONDITIONS prior to production. Please check with CSR for updates.



Title: **BlueTunes2 BC5MM Audio Example Design and Dev. Kit**
 Drawn By: **Refer. and Example Design Group**
 Date: 07-06-2007 14:52:59
 File: DEV-CD-1645C - Main circuit.SchDoc
 Revision: **C**
 Document Number: **DEV-PC-1645**
 Sheet 2 of 3

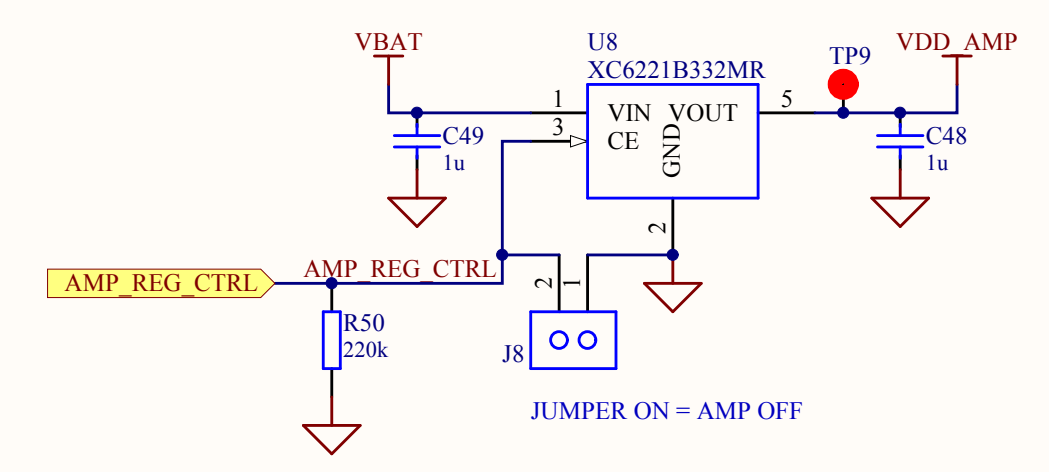




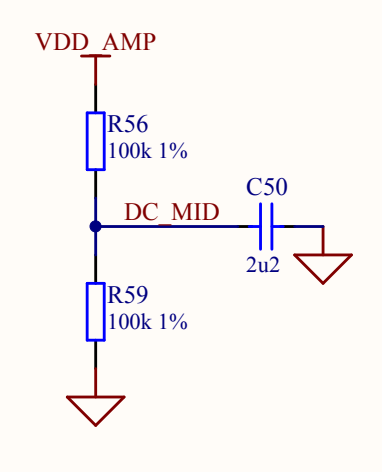
$f_{dB} = 1/2 * \pi * 220uF * 32ohm = 22Hz$

Single Ended Output

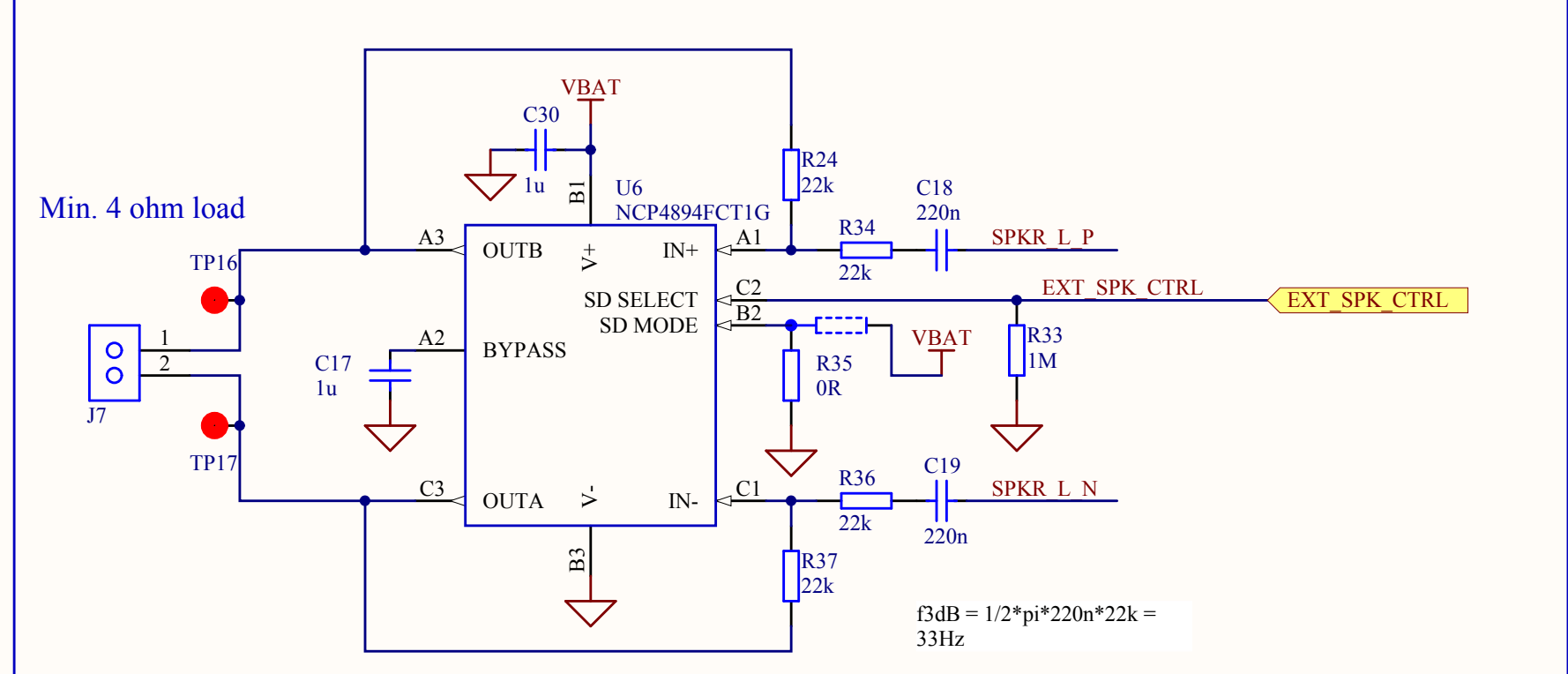
Audio Amp supply



Mid Rail Generation



Ext. Speaker Interface



$f_{dB} = 1/2 * \pi * 220n * 22k = 33Hz$

Release status (DRAFT/EXAMPLE/REFERENCE):
EXAMPLE
 This design is copyright (c) CSR PLC. Unauthorised reproduction is prohibited

LIMITATION OF LIABILITY
 The performance of this design has not been verified completely by CSR. It may contain errors or omissions for which CSR shall not be held liable. You should verify operation of the circuit UNDER ALL USAGE CONDITIONS prior to production. Please check with CSR for updates.



Title:	BlueTunes2 BC5MM Audio Example Design and Dev. Kit		
Drawn By:	Refer. and Example Design Group	Revision:	C
Date:	07-06-2007 14:52:59	Sheet	3 of 3
File:	DEV-CD-1645C - Audio.SchDoc		
Document Number:	DEV-PC-1645		