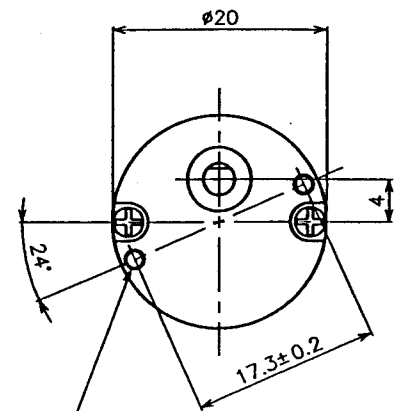
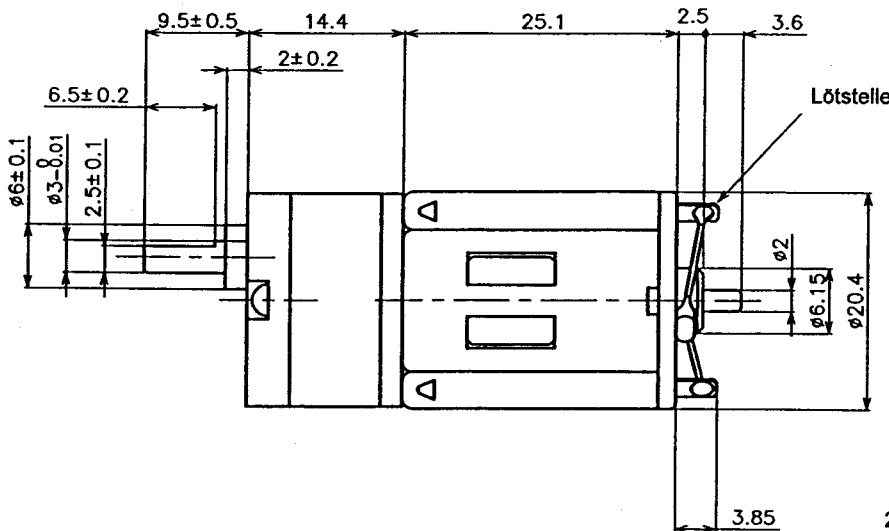
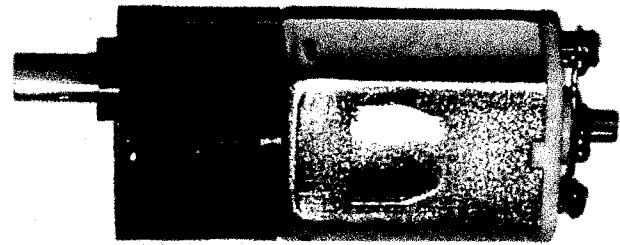




**DC - GETRIEBEMOTOR
LAGERPROGRAMM
20GN152025-330-xxx**

- DC Permanentmagnetmotor
- Stirnradgetriebe Typ 20G
- 12 Volt Motor: zulässig 4 - 12 Volt
- Vorentstört durch Kondensator
- Maximale Radiallast 2,5N
bei 5mm Abstand vom Flansch
- Maximale Axiallast 2N
- Maximales Axialspiel 0,5mm
- Gewicht 30g



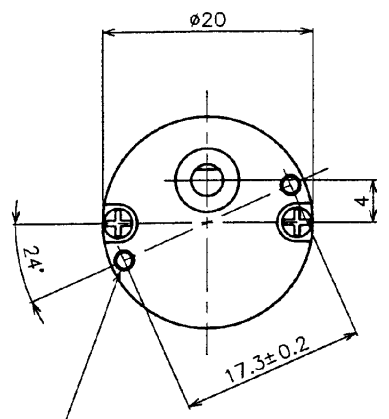
2 M2,0 P=0,4
Einschraubtiefe max. 4mm
Anzugsmoment max. 0,05Nm

Technische Daten

MOTOR- GETRIEBE Typ	NENN SPANNUNG Volt DC	GETRIEBE ÜBERSETZUNG i	LEERLAUF DREHZAHL 1 / min	DAUERBETRIEB BEI			GETRIEBE DREHMOMENT maximal mNm
				MAXIMALEM WIRKUNGSGRAD			
				DREHZAHL 1 / min	STROM A	DREHMOMENT mNm	
330-050	12	50	200	175	0,13	30	90
330-150	12	150	67	60	0,11	60	180
330-380	12	380	25	23	0,08	60	180

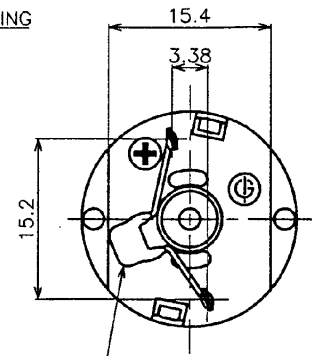
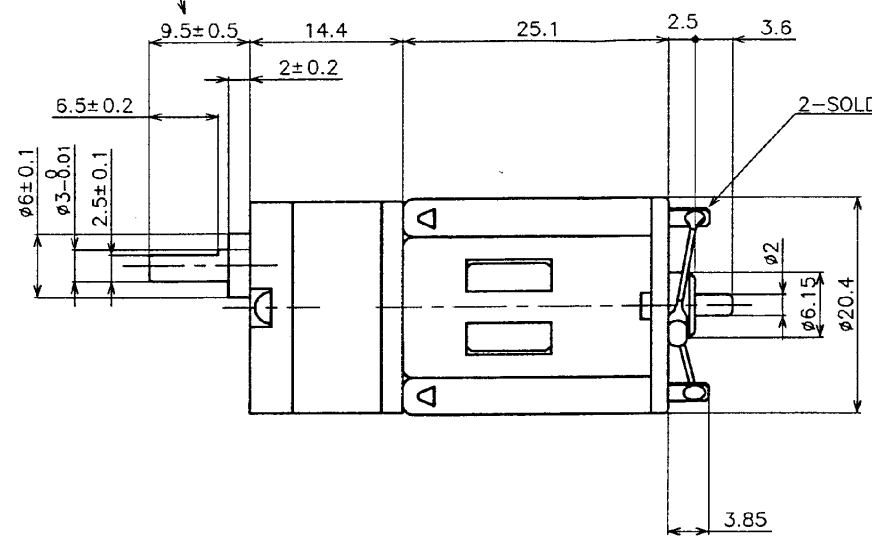
REV.	LOC.	DESCRIPTION	BY	DATE	APPRVD	DATE

DIRECTION OF ROTATION
 DUAL
 AT ⊕ MARK POSITIVE: CCW

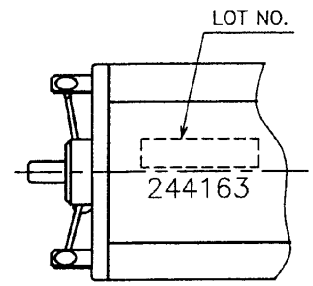


2-M2·P=0.4
 SCREWING DEPTH: 4 MAX
 FASTENING TORQUE: 0.5kgf-cm MAX.

THIS DIMENSION APPLIES ONLY
 WHEN SHAFT IS IN EXTREME RIGHT POSITION
 END PLAY 0.5 MAX.



CAPACITOR
 47μF·50WV



LOT NO.
 244163
 RAINER SCHORK
 16. Juli 1999

REQUEST APPROVAL
 CUSTOMER APPROVED BY
 DATE
 PLEASE RETURN ONE COPY TO IG



GEARD MOTOR SPECIFICATION

1. OPERATING VOLTAGE: 12V DC
2. AT NO LOAD: 215 ± 35RPM · 120ma MAX.
3. 29.4mN-m (300gf-cm) : 180 ± 30RPM · 200ma MAX.
4. REDUCTION RATIO: 1/50

ALL DIMENSIONS			MILLIMETERS	
TOLERANCE UNLESS OTHERWISE SPECIFIED				
SCALE 2:1	DECIMAL ± 0.3	ANGULAR ± 2°		
DRAWN Y.YAMAUCHI 24 JUN.1999		TITLE GEAR MOTOR ASSY		MODEL NO. 20GN152025-330-GHC
DESIGN		CODE NO. GC-2025-0002-00		DRAWING NO. GM-2025-0007
APPROVED '99-6-25 M.NAGASAWA		CUSTOMER CONRAD		REV. 00
DISTRIBUTION		KAWASAKI, JAPAN		

244163



CONRAD ID

CHARACTERISTIC CURVES

MODEL NO. 20GN152025-330-GH

CURVE NO. C-99-177

WINDING SPEC. 009-330-3 (A= 0°)

SR. NO. PO 3642

VOLTAGE DC 12 V ROTATION CW, CCW

DATE 14 JUN. 1999

AT NO LOAD: RPM

TESTED BY M. MIZUNO.

AT RATED LOAD: RPM

GEAR RATIO 1:50

