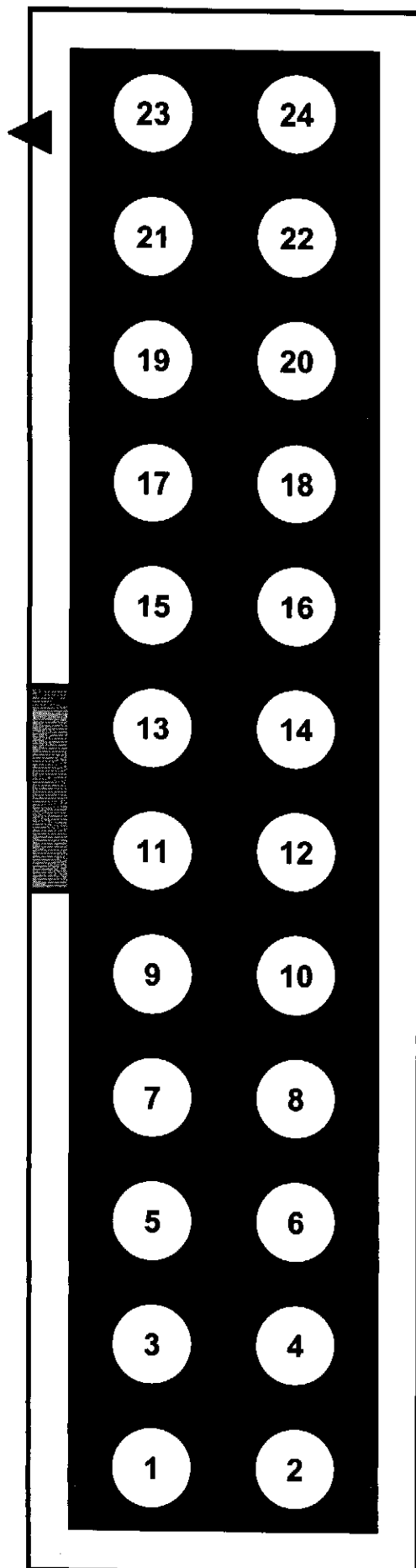
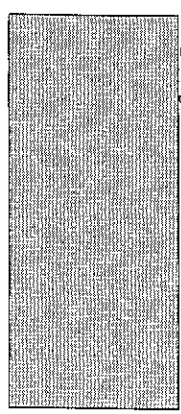


# PFL24-Connector NavMe

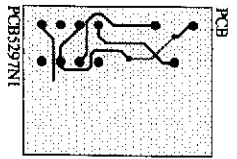
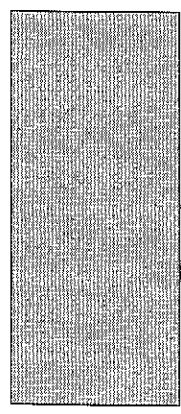
Ansicht von oben (Stiftwanne 2x12 RM2.54mm)



PowerSupply & Interface  
5297\_Analog.sch



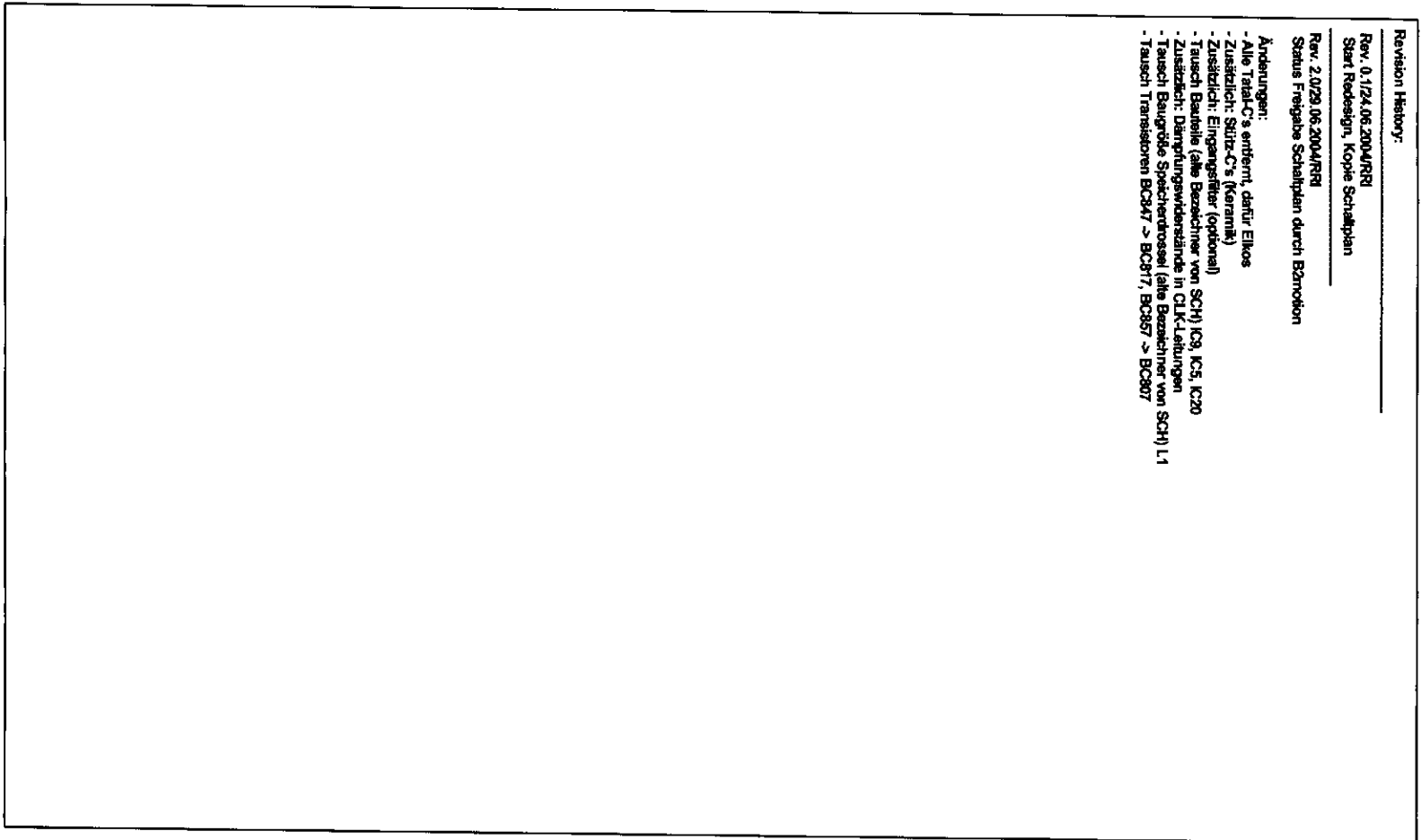
µC-Core  
5297\_CPU.sch



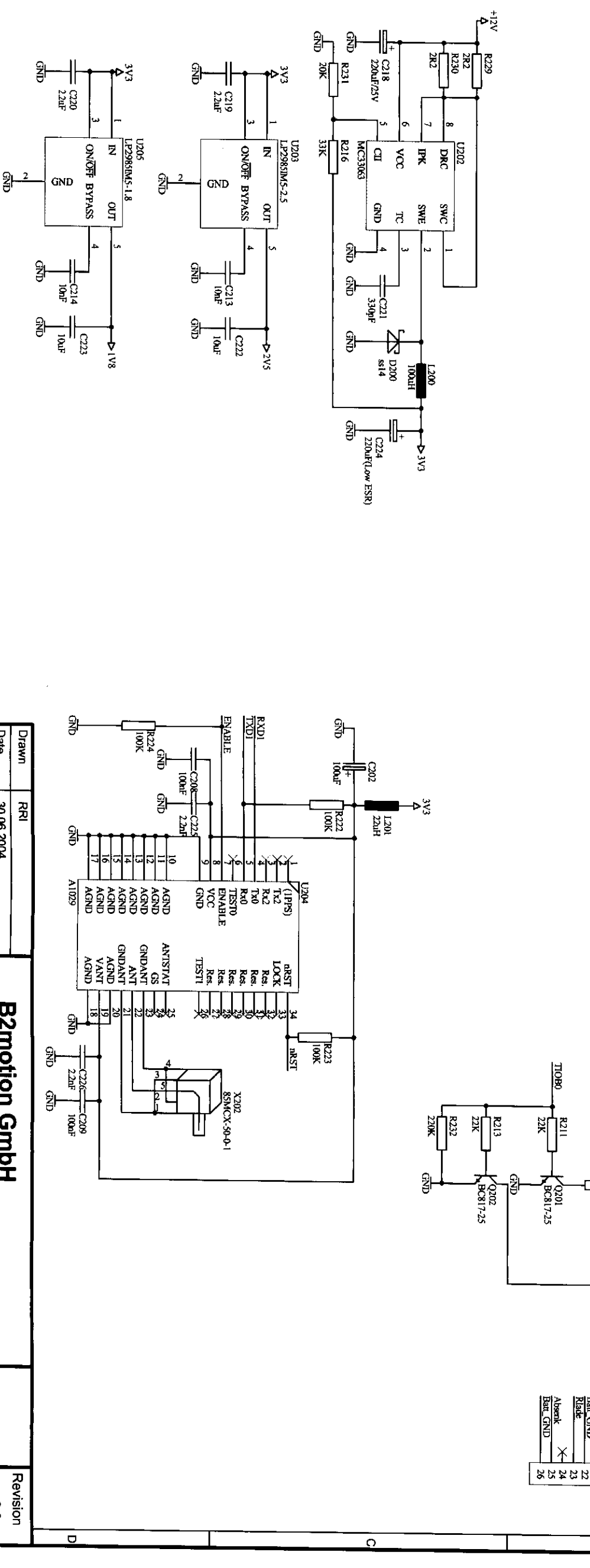
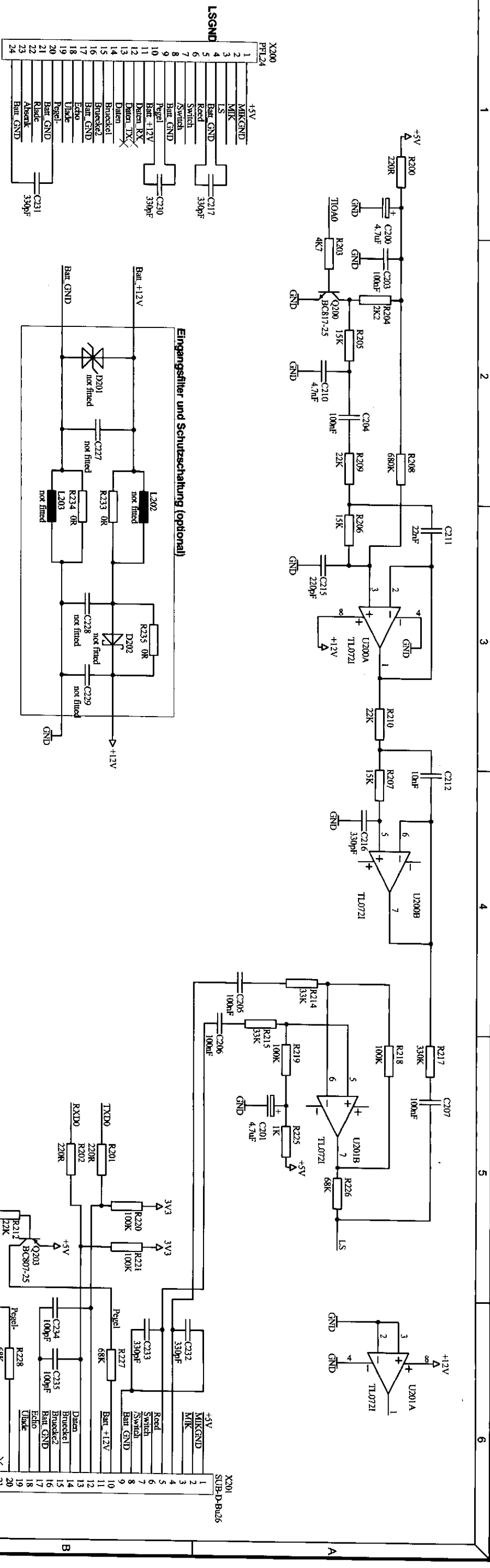
INFO  
Status  
Information  
Block

Revision History:

- Rev: 0.1/24.06.2004/RRI  
Start Redesign, Kopie Schaltplan
  - Rev: 2.0/29.06.2004/RRI  
Status Freigabe Schaltplan durch B2motion
- Änderungen:
- Alle Teils-Cs entfernt, dafür Elkos
  - Zusätzlich: SMD-Cs (Keramk)
  - Zusätzlich: Eingangsfiler (optional)
  - Tausch Bauteile (alle Bauteile von SCH) IC9, IC5, IC20
  - Zusatzlich: Dämpfungskondensatoren in CLK-Leitungen
  - Tausch Baugröße Synchronoszillator (alle Bauteile von SCH) L1
  - Tausch Transistoren BC347 -> BC817, BC857 -> BC907



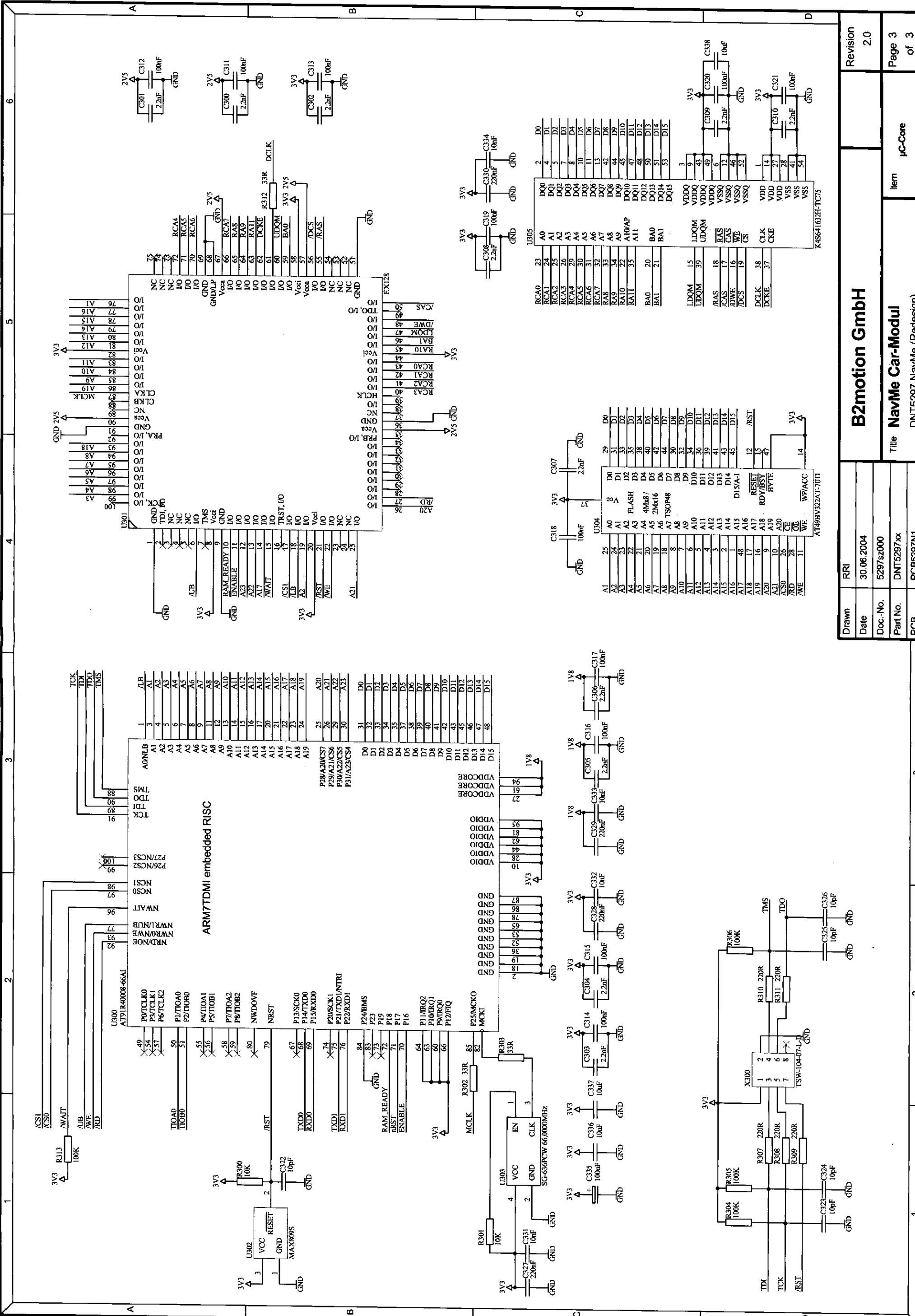
Drawn	RRI	<b>B2motion GmbH</b>		Item	Revision 2.0
Date	30.06.2004				
Doc.-No.	5297.sz000	<b>NavMe Car-Modul</b>			Page 1 of 3
Part No.	DNT5297.kx				
PCB	PCB5297N1	DNT5297 NavMe (Redesign)			



1	2	3	4	5	6
---	---	---	---	---	---

Drawn	RRR
Date	30.06.2004
Doc.-No.	5297sz000
Part No.	DNT5297xx
PCB	PCB5297N1

<b>B2motion GmbH</b>	
Title <b>NavMe Car-Modul</b>	
DNT5297 NavMe (Redesign)	
Item	Interface, Power Supply
Page 2	Revision 2.0
of 3	



Drawn	RRI	Revision	2.0
Date	30.06.2004	Item	µC-Core
Doc.-No.	5297sz000	Title	NavMe Car-Modul
Part No.	DNT5297xx	Item	DNT5297 NavMe (Redesign)
PCB	PCB5297N1	Page	3 of 3

URHEBERSCHUTZ NACH DIN 34. THE COPYRIGHT OF THIS DOCUMENT IS THE PROPERTY OF B2motion GmbH. THE DOCUMENT MAY NOT BE COPIED, REPRODUCED OR EXHIBITED TO A THIRD PARTY WITHOUT WRITTEN PERMISSION.