

# µC and RAM

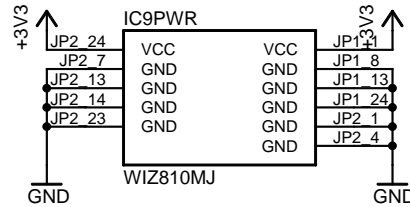
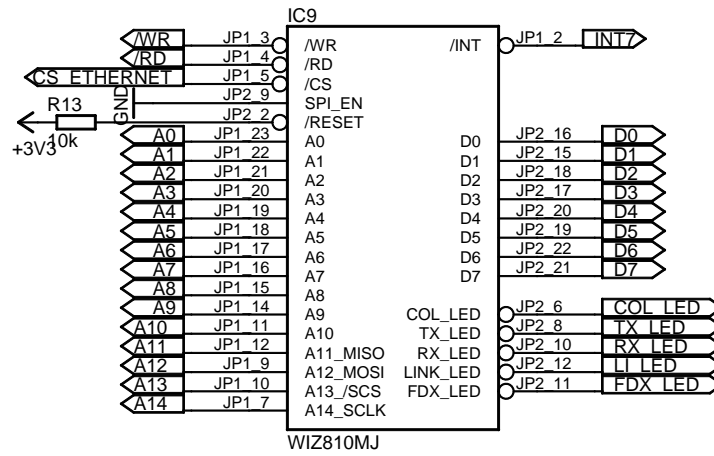
TITLE: Webserver

Document Number:

REV:

Date: 04.11.2007 21:43:05

Sheet: 1/7



# Ethernet

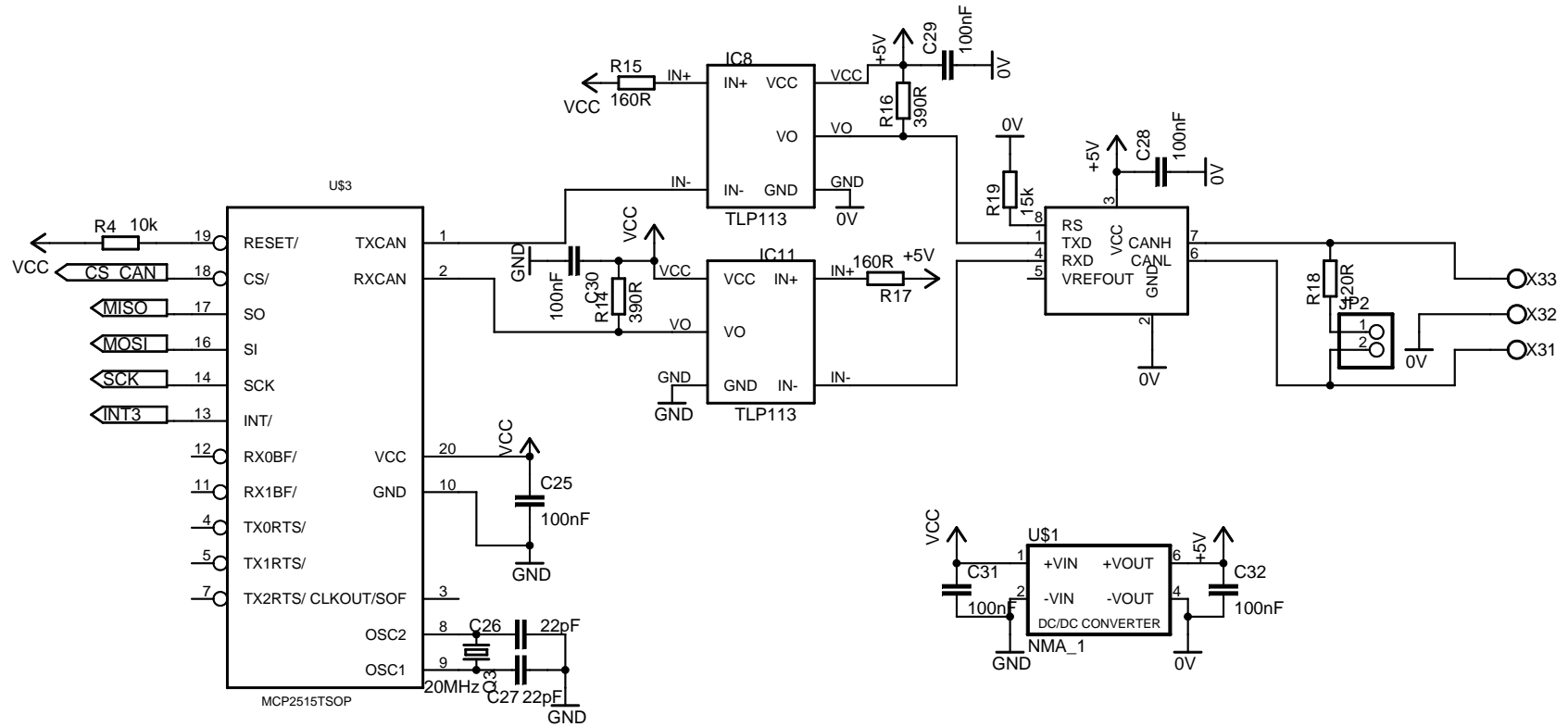
TITLE: Webserver

Document Number:

REV:

Date: 04.11.2007 21:43:05

Sheet: 2/7



# CAN

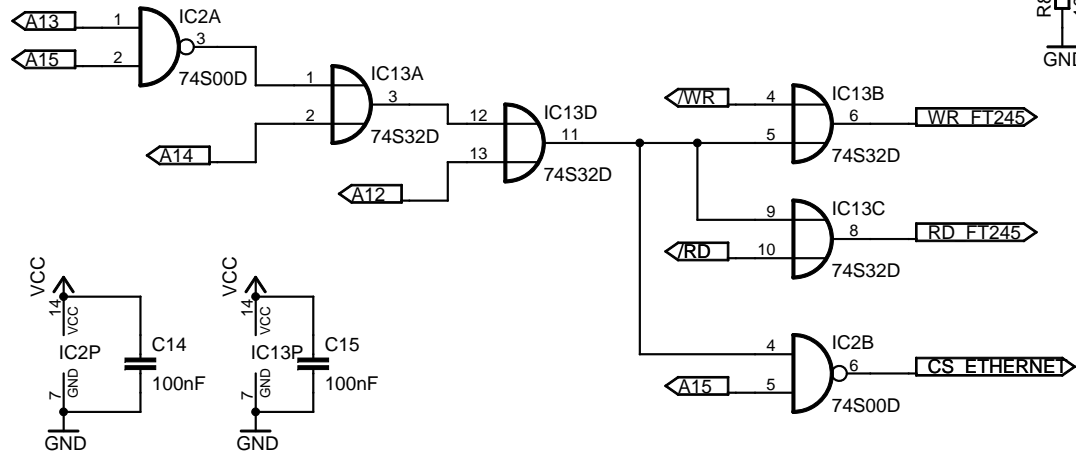
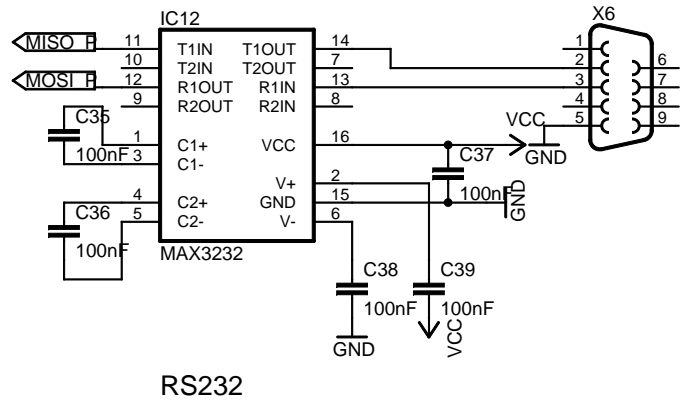
TITLE: Webserver

Document Number:

REV:

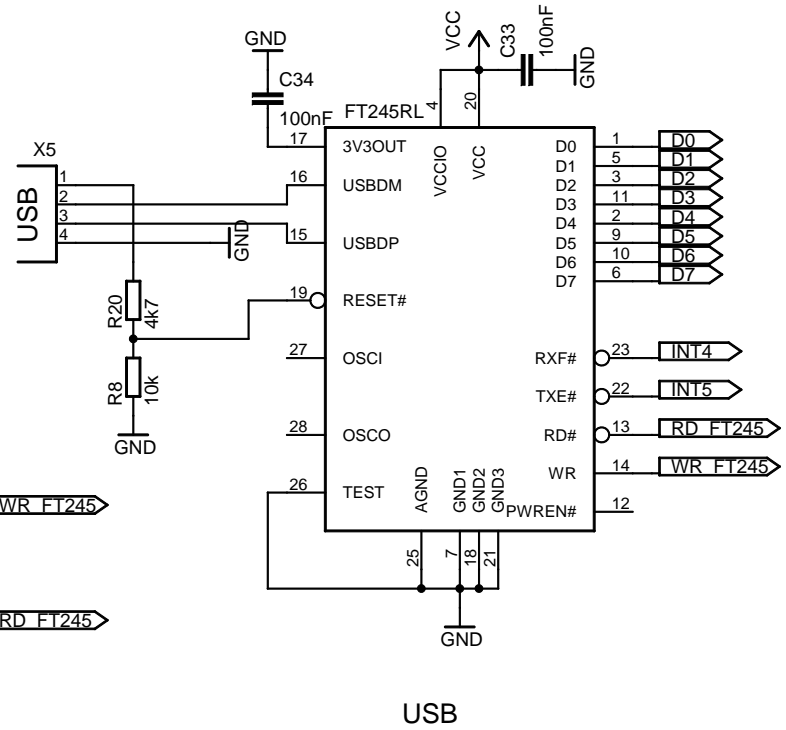
Date: 04.11.2007 21:43:05

Sheet: 3/7



Enable Leitung für SPI Pins der SD Karte

unbenutztes Gatter, Eingänge auf Masse legen



# Interface

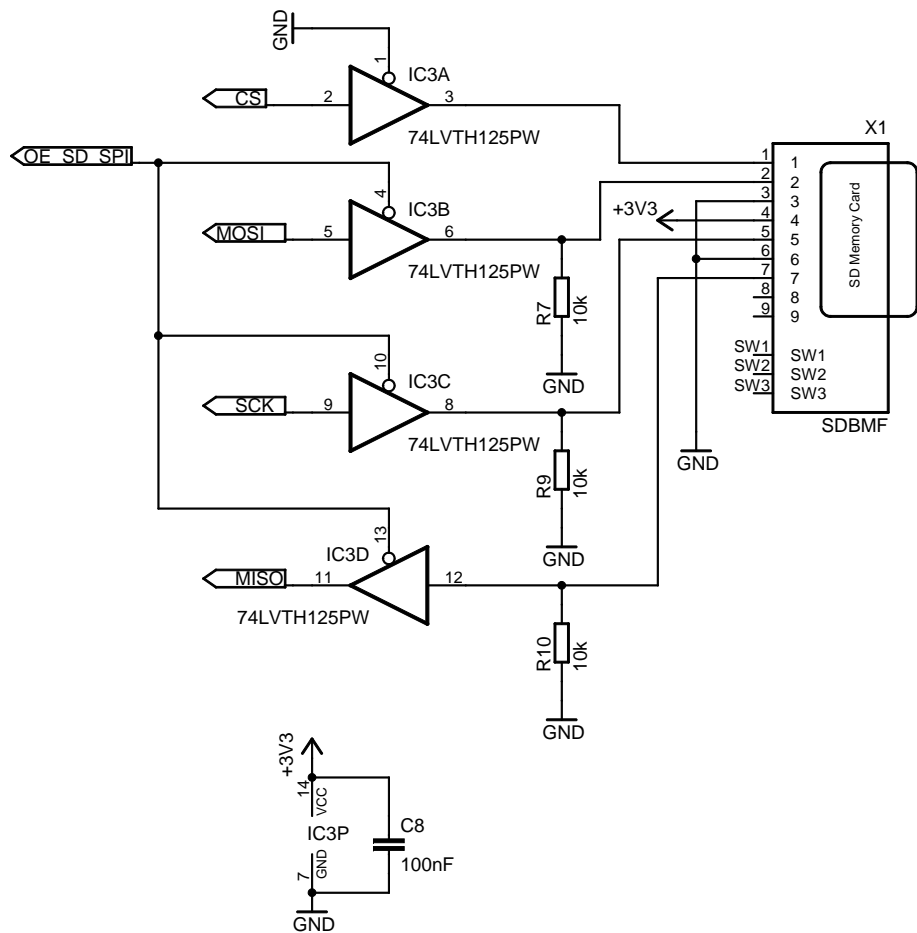
TITLE: Webserver

Document Number:

REV:

Date: 04.11.2007 21:43:05

Sheet: 4/7



# SD Card

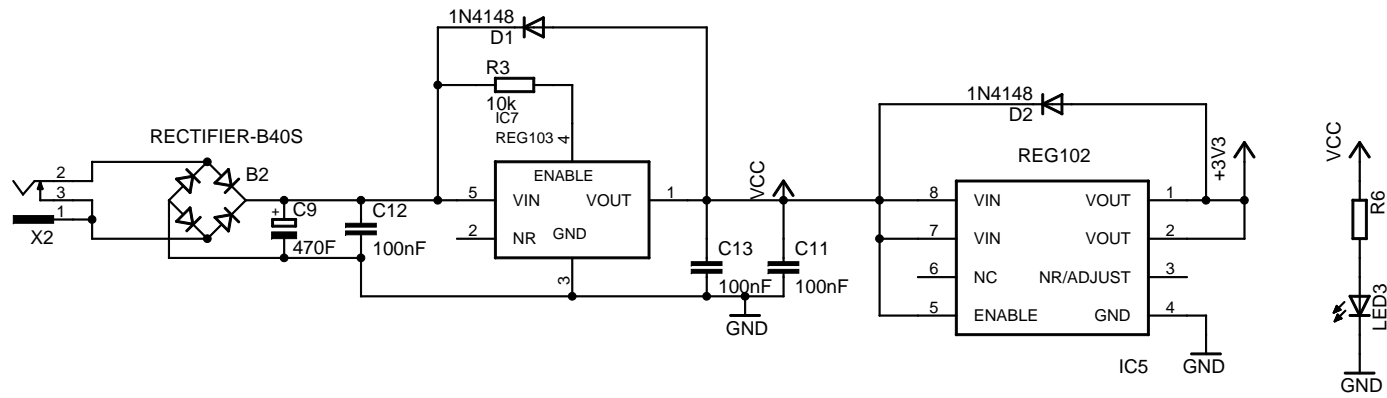
TITLE: Webserver

Document Number:

REV:

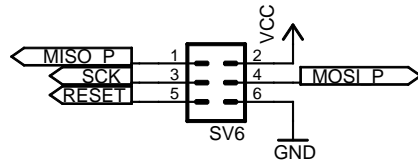
Date: 04.11.2007 21:43:05

Sheet: 5/7

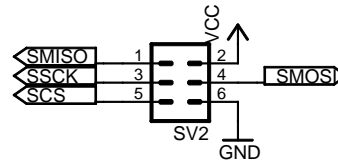


# Power supply

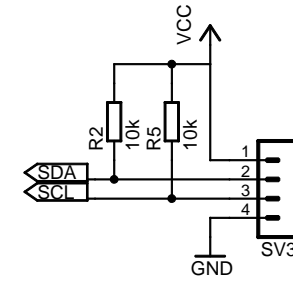
TITLE: Webserver	
Document Number:	REV:
Date: 04.11.2007 21:43:05	Sheet: 6/7



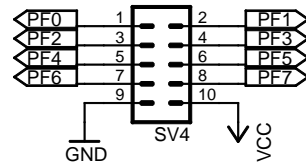
ISP Connector



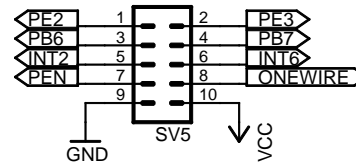
Software SPI



Hardware I2C



PORT Connectors



PORT Connectors

# Connectors

TITLE: Webserver

Document Number:

REV:

Date: 04.11.2007 21:43:05

Sheet: 7/7