

Warning Levels: [-, 500, 600, 700, 800, 900, 1000, 1100, 1200, 1300]

### LED-Color

Green:  $X < 450$  ppm  
Dark:  $450 \text{ ppm} < X < \text{Warning}$   
Blue:  $\text{Warning} < X < \text{Warning} + 250$  ppm  
Red:  $X > \text{Warning} + 250$  ppm

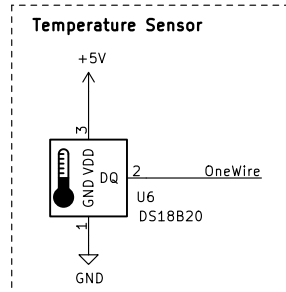
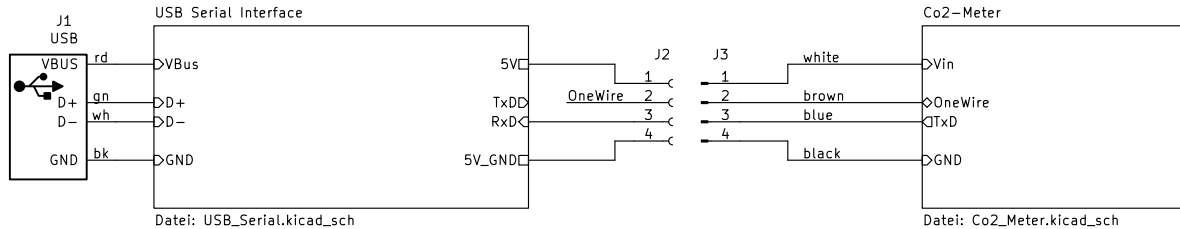
Red/Blue: Waiting before calibration  
Green/Blue: Calibration done

### Serial Connection

9600;N;8;1

### Calibration

SW = 0  
 $X < 450$  ppm |  $t > 30$  min



Philipp Kälin

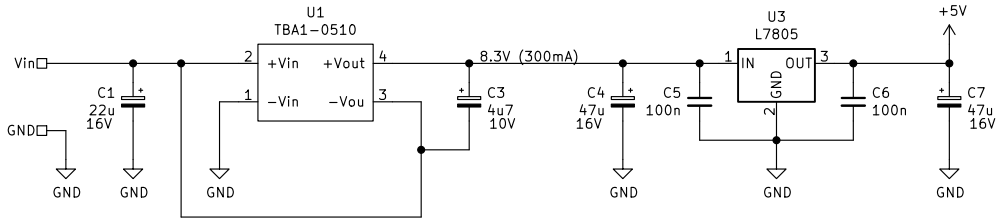
Sheet: /  
File: Co2Meter.kicad\_sch

**Title: Co2Meter**

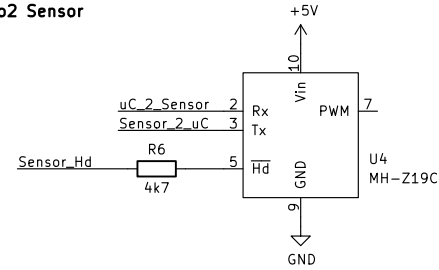
Size: User Date: 2021-12-25  
KiCad E.D.A. kicad (6.0.1)

Rev: 1.0  
Id: 1/3

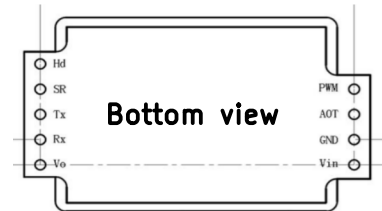
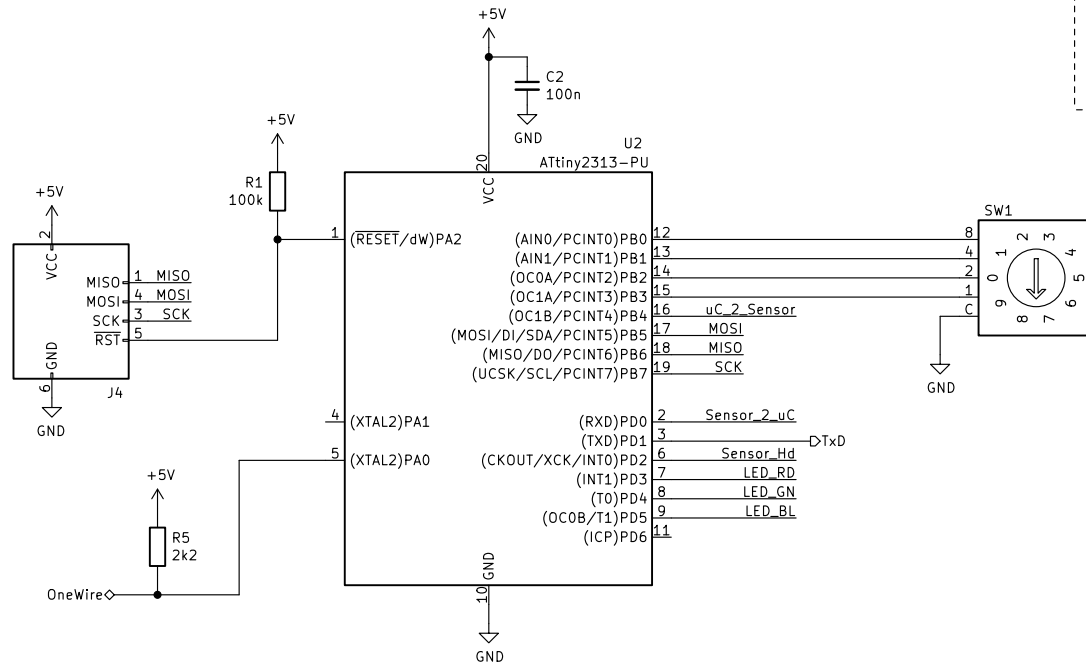
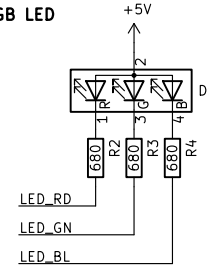
**5V Supply**



**Co2 Sensor**



**RGB LED**



Philipp Kälin

Sheet: /Co2-Meter/

File: Co2\_Meter.kicad\_sch

**Title: Co2 & Temperature Meter**

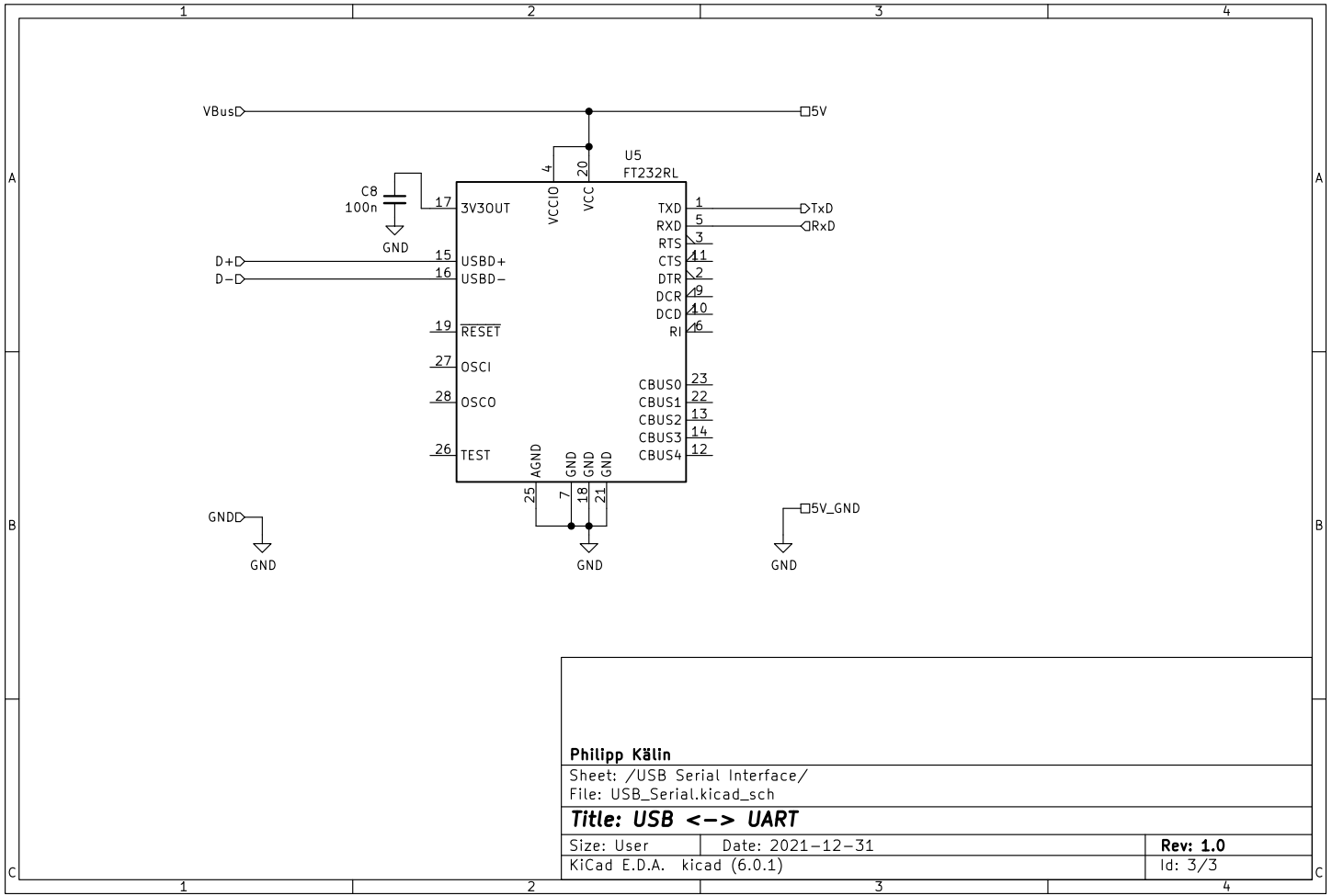
Size: A4

Date:

Rev: 1.0

KiCad E.D.A. kicad (6.0.1)

Id: 2/3



**Philipp Kälin**

Sheet: /USB Serial Interface/  
 File: USB\_Serial.kicad\_sch

**Title: USB <-> UART**

Size: User      Date: 2021-12-31  
 KiCad E.D.A.    kicad (6.0.1)

**Rev: 1.0**  
 Id: 3/3