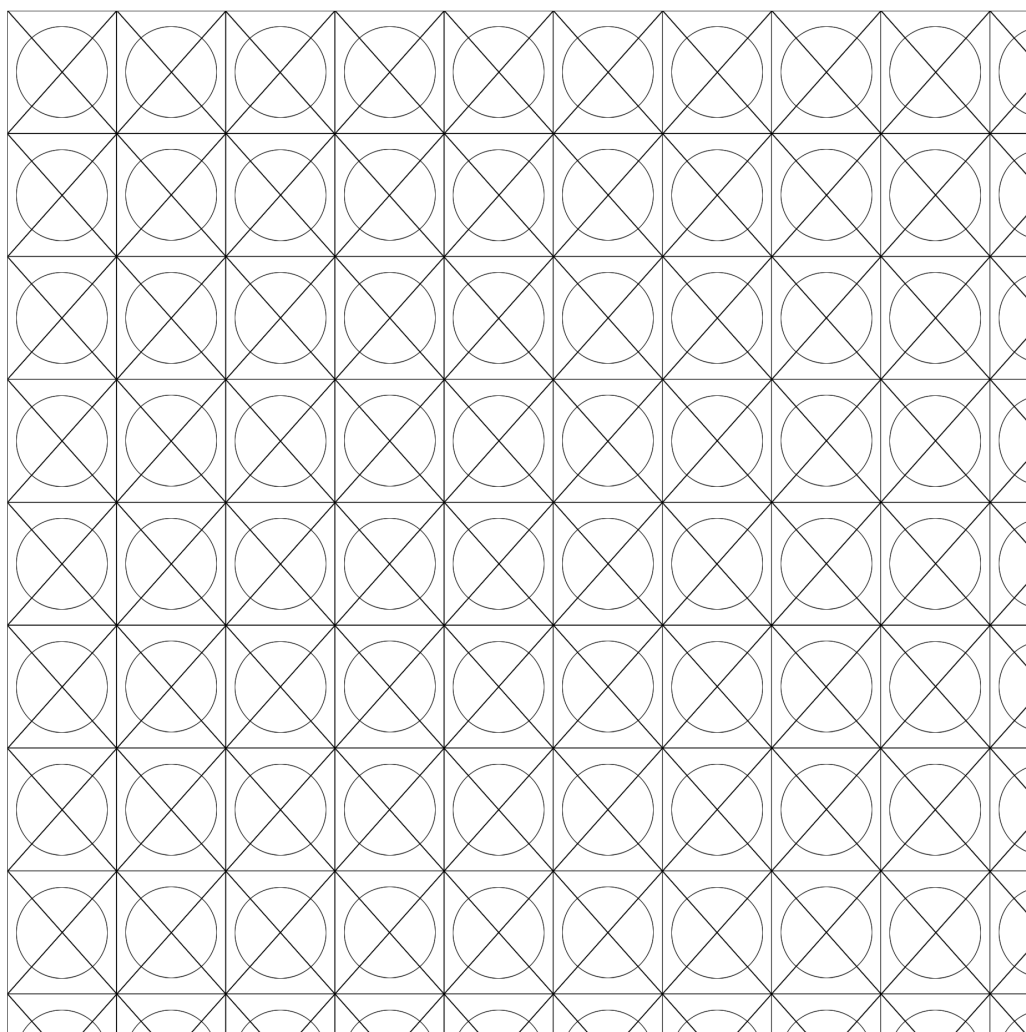




288 Ausfräsungen für 18 x 16 LED-Matrix, Absta

Fräs-Ø der Kammern 14

9 Vertiefungen für die Befestigungsmagnete: Ø

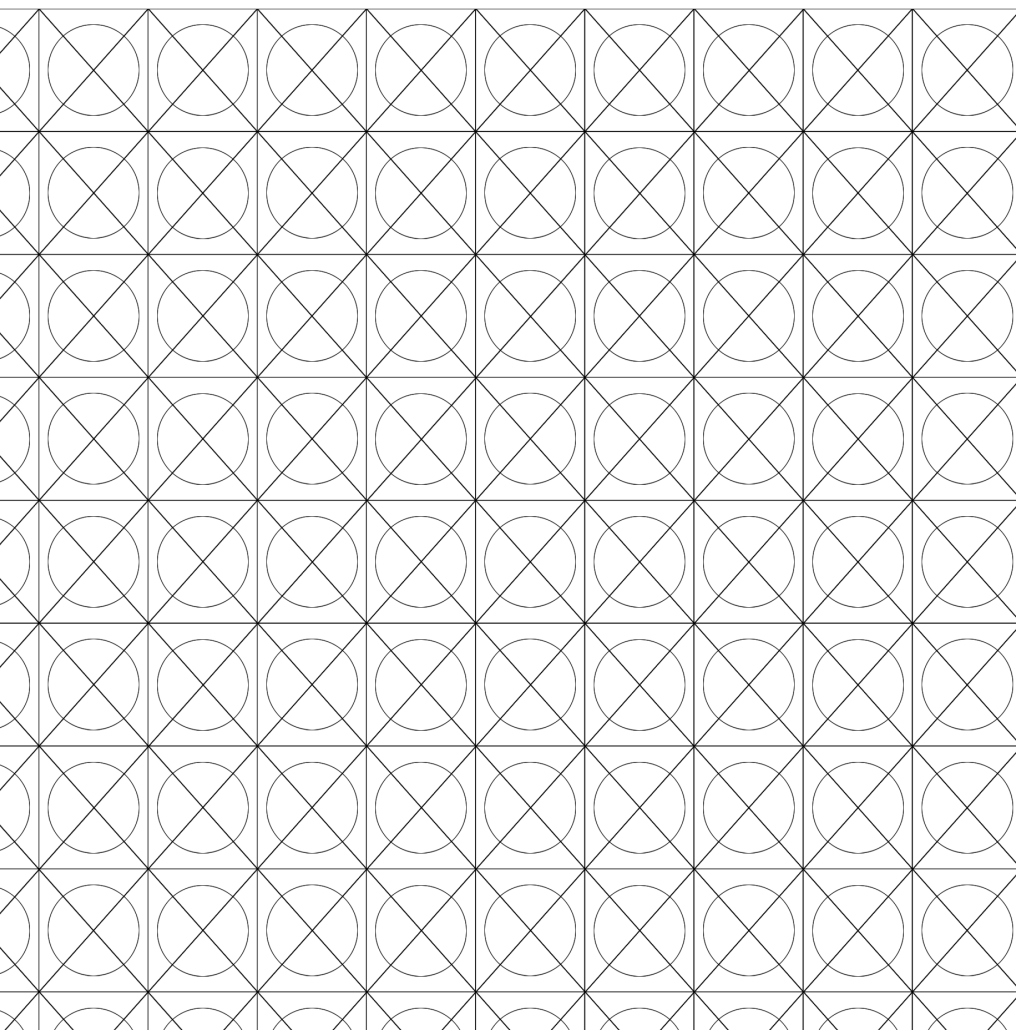


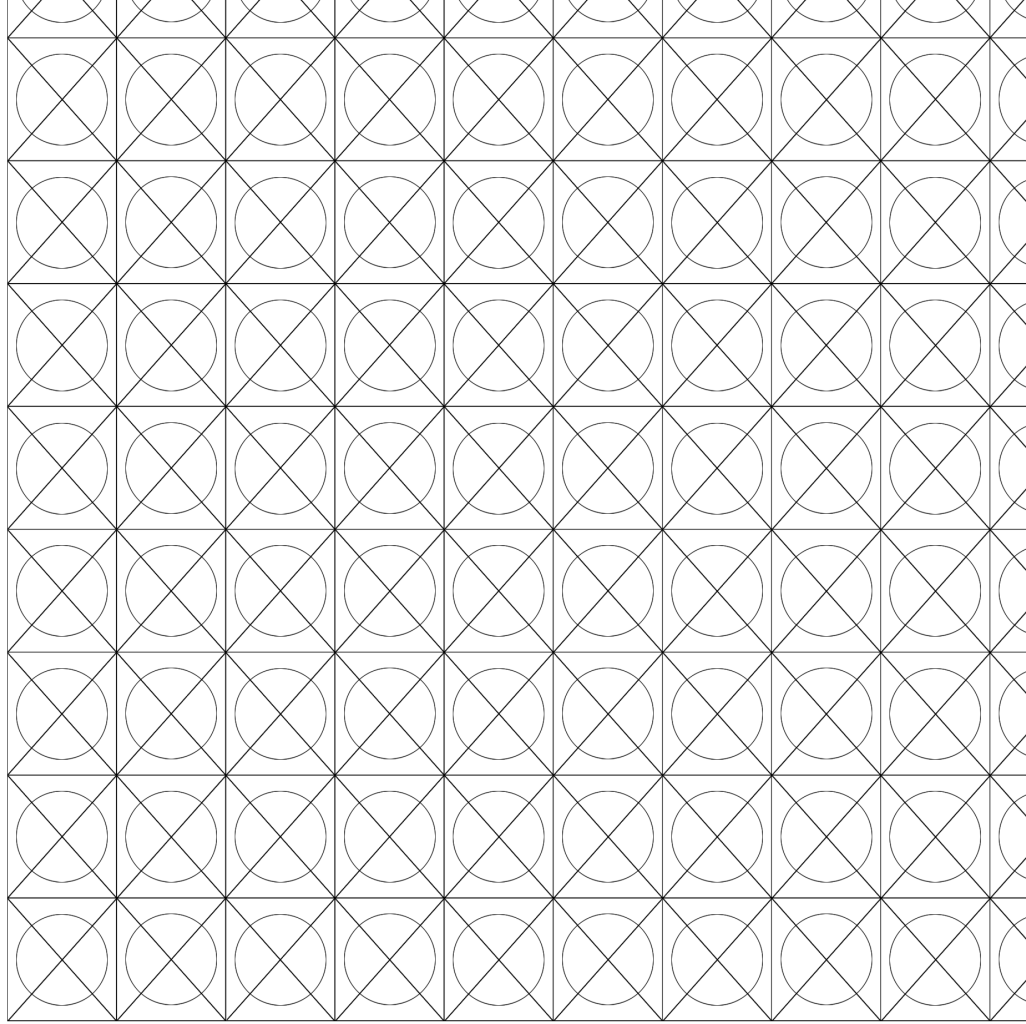


Abstand horizontal 16,67mm, vertikal 18,75 mm

rn 14 mm, Loch-Ø 8 mm

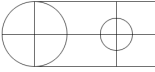
te: Ø und Tiefe je nach Magnet-Abmessungen

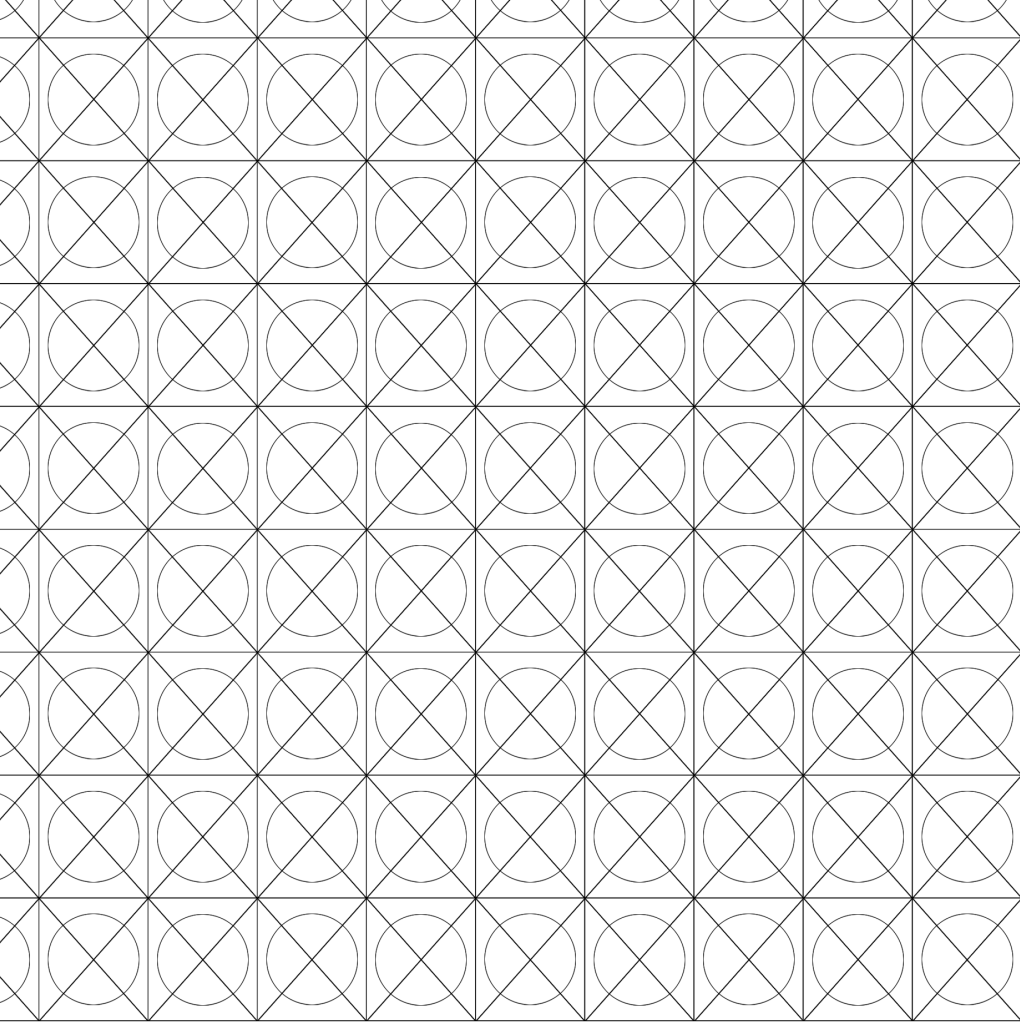




Wordclo

Bohrplan für MDF-Montageplatte





clock 24h

platte 450 mm x 450 mm x 16 mm

